





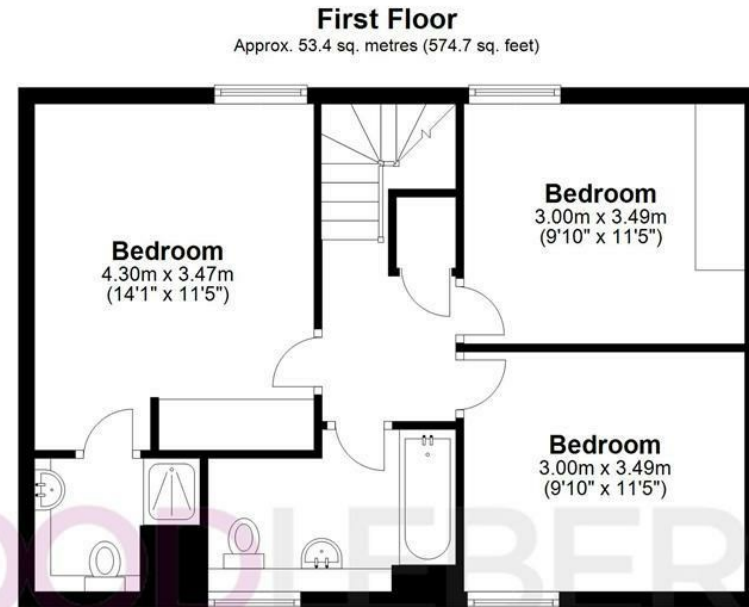
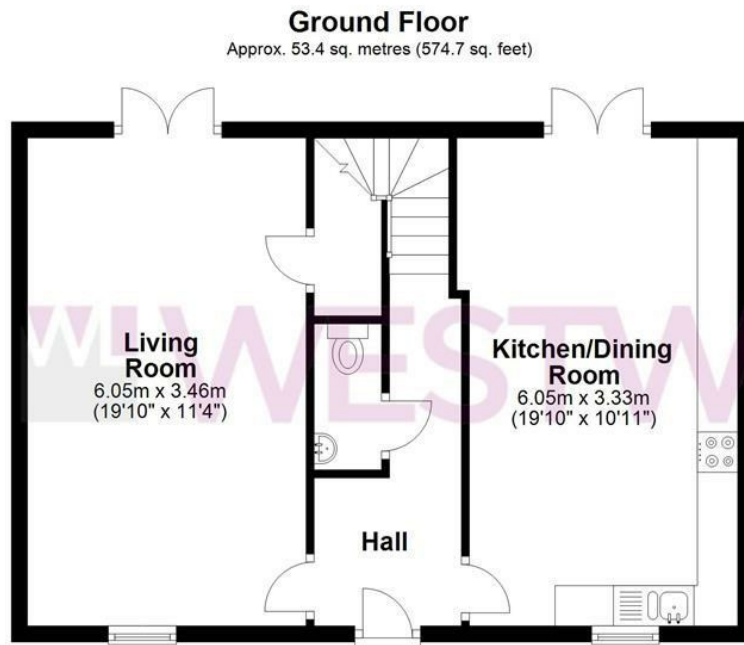
Willis Grove, Balls Park, Hertford, SG13 8FH

Westwood Leber are delighted to present this prestigious and gated enclave of Balls Park, this immaculately presented three double-bedroom semi-detached residence offers a seamless blend of modern comfort and timeless charm. The thoughtfully designed interior features underfloor heating throughout both floors, a spacious lounge with direct access to the rear garden and a stylish kitchen-diner fitted with contemporary cabinetry, and a convenient ground floor WC. Upstairs, the property comprises three well-appointed bedrooms, including a principal suite with en-suite shower room, complemented by a sleek family bathroom. Externally, the home enjoys two private parking spaces at the front and a beautifully landscaped rear garden with a patio, lawn, and a durable powered brick-built outbuilding for storage or workspace. An internal viewing is highly recommended!



WESTWOODLEBER

WESTWOODLEBER
LET US GUIDE YOU HOME



Outbuilding
Approx. 4.7 sq. metres (51.1 sq. feet)



Total area: approx. 111.5 sq. metres (1200.4 sq. feet)

THE FLOORPLAN IS FOR ILLUSTRATIVE PURPOSES ONLY AND IS NOT TO SCALE. Measurements and features are approximate and may differ from the actual property. Verify all details independently; no liability is accepted for errors or omissions.

[Property marketing provided by www.fotomarketing.co.uk](http://www.fotomarketing.co.uk)













 WESTWOODLEBER