

Sedge Green, Roydon, Harlow, CM19 5JR

Westwood Leber are delighted to bring to the market this superb property set behind a secure gated entrance. This remarkable detached chalet bungalow boasts three generously sized double bedrooms and a host of high-end features throughout. A spacious gravel driveway welcomes you to the property, offering plentiful off-road parking and access to a separate double garage/workshop. The front garden, thoughtfully landscaped, also offers scope for further parking if desired.

Inside, the home is beautifully maintained with a bright and modern interior. The large bathroom includes both bath and shower facilities, while the expansive kitchen and dining area is perfectly suited for both everyday living and entertaining. The property benefits from energy-efficient double glazing and electric heating, with a gas supply available for future connection.

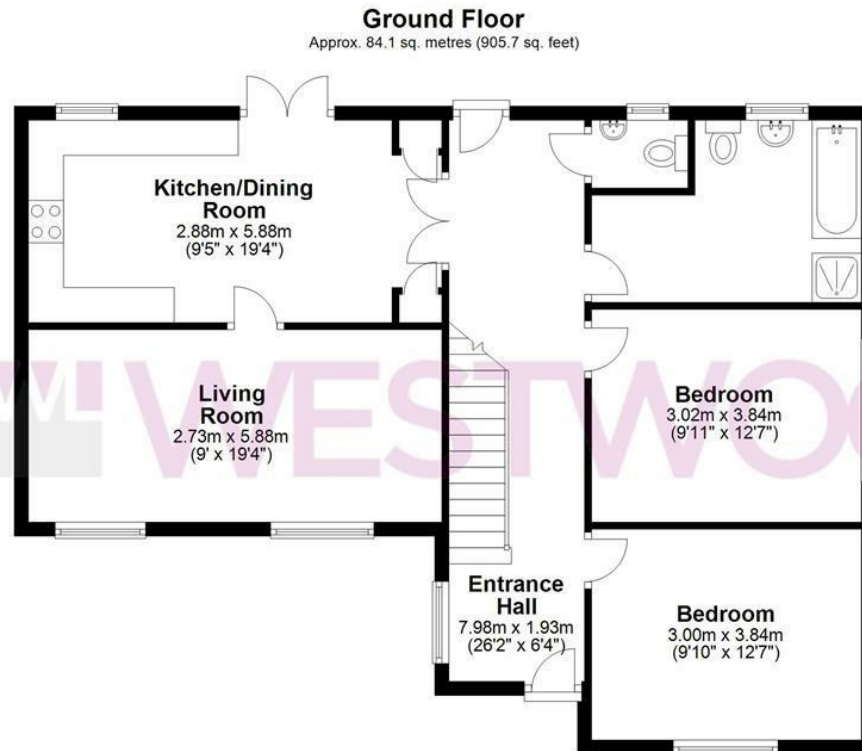
The rear garden is truly exceptional—stretching approximately 200 feet, it offers a peaceful retreat with a mix of flowering plants, mature shrubs, and a well-kept lawn. A charming pond adds a tranquil touch, and there's plenty of space for outdoor dining and social gatherings during warmer months.

Upstairs, the layout includes an additional bedroom and a useful study or work area, ideal for families or those working from home. Subject to the necessary planning permissions, there is also the opportunity to add a two-storey rear extension, in line with similar properties nearby.



W^L WESTWOODLEBER

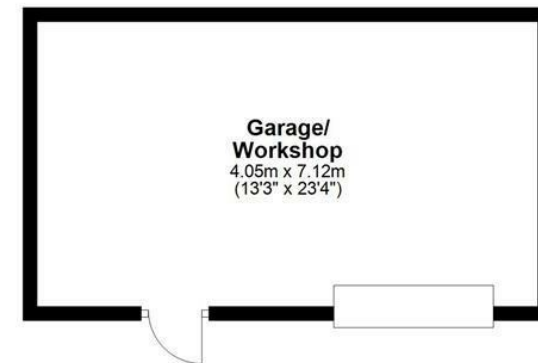
W^L WESTWOODLEBER
LET US GUIDE YOU HOME



First Floor
Approx. 27.6 sq. metres (297.3 sq. feet)



Garage
Approx. 28.8 sq. metres (310.3 sq. feet)



Total area: approx. 140.6 sq. metres (1513.3 sq. feet)

THE FLOORPLAN IS FOR ILLUSTRATIVE PURPOSES ONLY AND IS NOT TO SCALE. Measurements and features are approximate and may differ from the actual property. Verify all details independently; no liability is accepted for errors or omissions.

[Property marketing provided by www.fotomarketing.co.uk](http://www.fotomarketing.co.uk)

















WESTWOODLEBER



WESTWOODLEBER



WESTWOODLEBER



WESTWOODLEBER



