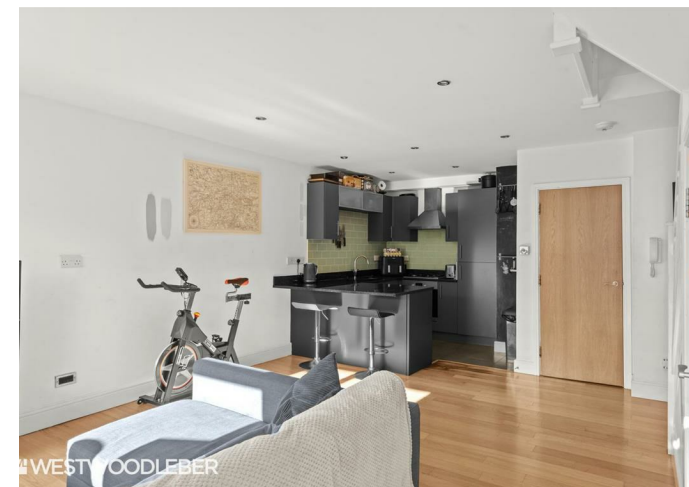




WESTWOODLEBER



Isabel Court, Hoddesdon, EN11 0LQ

Westwood Leber are delighted to bring to the market this beautifully presented two double bedroom split level apartment located in the heart of Hoddesdon, just a short walk from Rye House Rail Station. This fantastic property is located on a popular development just off Walton road and boasts a large open plan kitchen/ lounge/ diner, two well sized double bedroom with a large roof terrace off the master bedroom and a refitted three-piece bathroom suite. Further benefits include a private courtyard garden, allocated parking, ample storage and a downstairs toilet. Internal viewing is highly recommended!



WESTWOODLEBER

WESTWOODLEBER
LET US GUIDE YOU HOME

Ground Floor

Approx. 34.5 sq. metres (371.3 sq. feet)



First Floor

Approx. 34.5 sq. metres (371.3 sq. feet)



Total area: approx. 69.0 sq. metres (742.6 sq. feet)

THE FLOORPLAN IS FOR ILLUSTRATIVE PURPOSES ONLY AND IS NOT TO SCALE. Measurements and features are approximate and may differ from the actual property. Verify all details independently; no liability is accepted for errors or omissions.

[Property marketing provided by www.fotomarketing.co.uk](http://www.fotomarketing.co.uk)







