

The Springs, Broxbourne, EN10 6EW

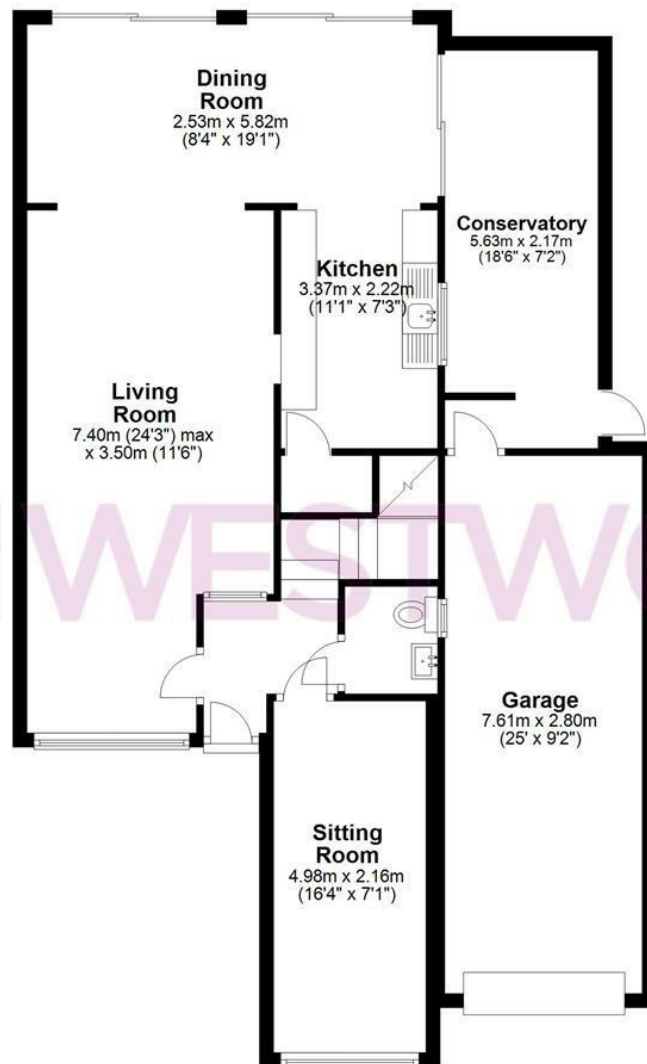
Westwood Leber are delighted to bring to the market this spacious three bedroom end of terrace family home. This property offers fantastic living accommodation comprising of a large open sitting/dining room, three double bedrooms and double garage with potential to convert (planning permission already approved). Further benefits include off-street parking, a downstairs w/c and a large, well landscaped rear garden with side access. An internal viewing is highly recommended!



WESTWOODLEBER

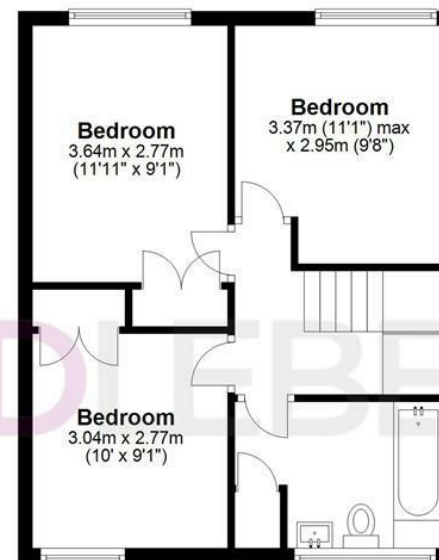
Ground Floor

Approx. 102.7 sq. metres (1105.3 sq. feet)



First Floor

Approx. 43.1 sq. metres (463.4 sq. feet)



Total area: approx. 145.7 sq. metres (1568.8 sq. feet)

THE FLOORPLAN IS FOR ILLUSTRATIVE PURPOSES ONLY AND IS NOT TO SCALE. Measurements and features are approximate and may differ from the actual property. Verify all details independently; no liability is accepted for errors or omissions.

Property marketing provided by www.fotomarketing.co.uk



