





The Coppings, Hoddesdon, EN11 9NJ

Westwood Leber is excited to present this outstanding four-bedroom townhouse situated in the highly sought-after Hundred Acre development in Hoddesdon. This property is conveniently located just a short walk from Cranbourne School and local amenities, as well as being close to Rye House rail station, which offers services to Tottenham Hale and London Liverpool Street.

The residence boasts exceptionally versatile living spaces, featuring four/ five bedrooms and a spacious open-plan kitchen/diner. Additionally, a separate converted garage serves as a comfortable lounge. The home also benefits from a well sized rear garden with side access and a front driveway.

We strongly encourage an internal viewing to fully appreciate all that this property has to offer!

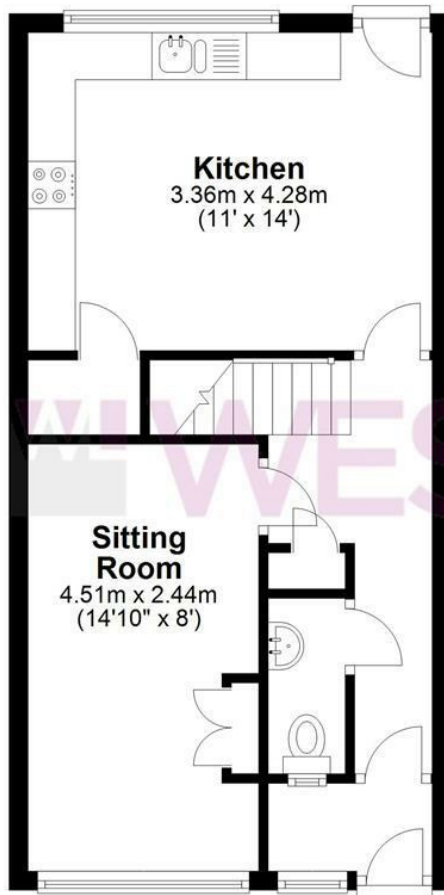


W WESTWOODLEBER

W WESTWOODLEBER
LET US GUIDE YOU HOME

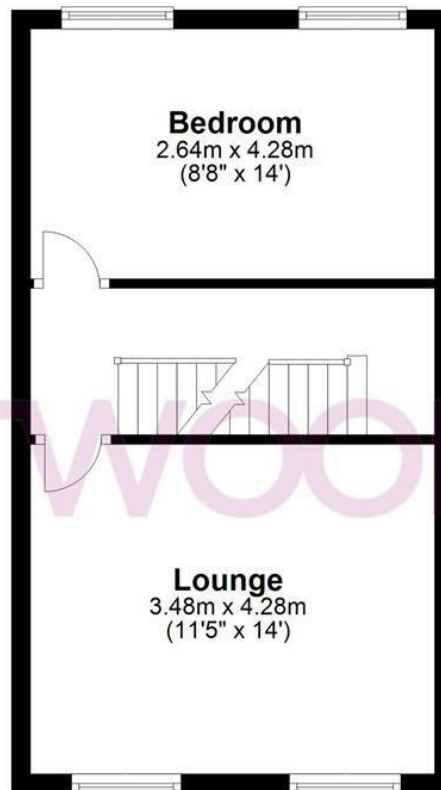
Ground Floor

Approx. 34.1 sq. metres (367.6 sq. feet)



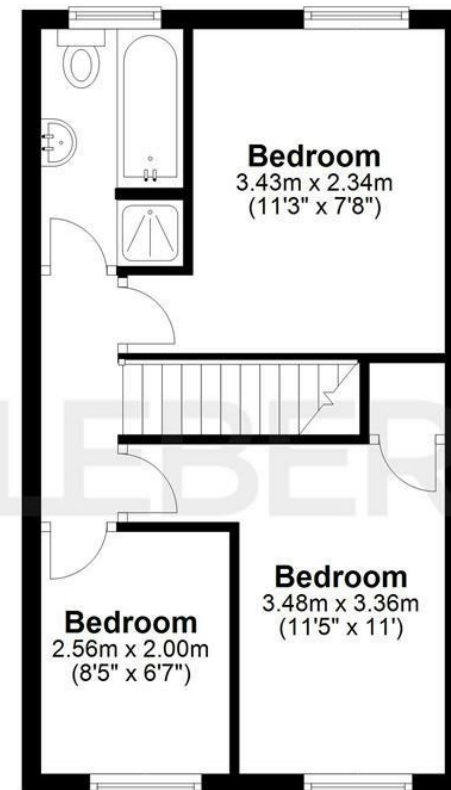
First Floor

Approx. 33.7 sq. metres (362.2 sq. feet)



Second Floor

Approx. 32.8 sq. metres (353.1 sq. feet)



Total area: approx. 100.6 sq. metres (1082.9 sq. feet)

THE FLOORPLAN IS FOR ILLUSTRATIVE PURPOSES ONLY AND IS NOT TO SCALE. Measurements and features are approximate and may differ from the actual property. Verify all details independently; no liability is accepted for errors or omissions.

[Property marketing provided by www.fotomarketing.co.uk](http://www.fotomarketing.co.uk)



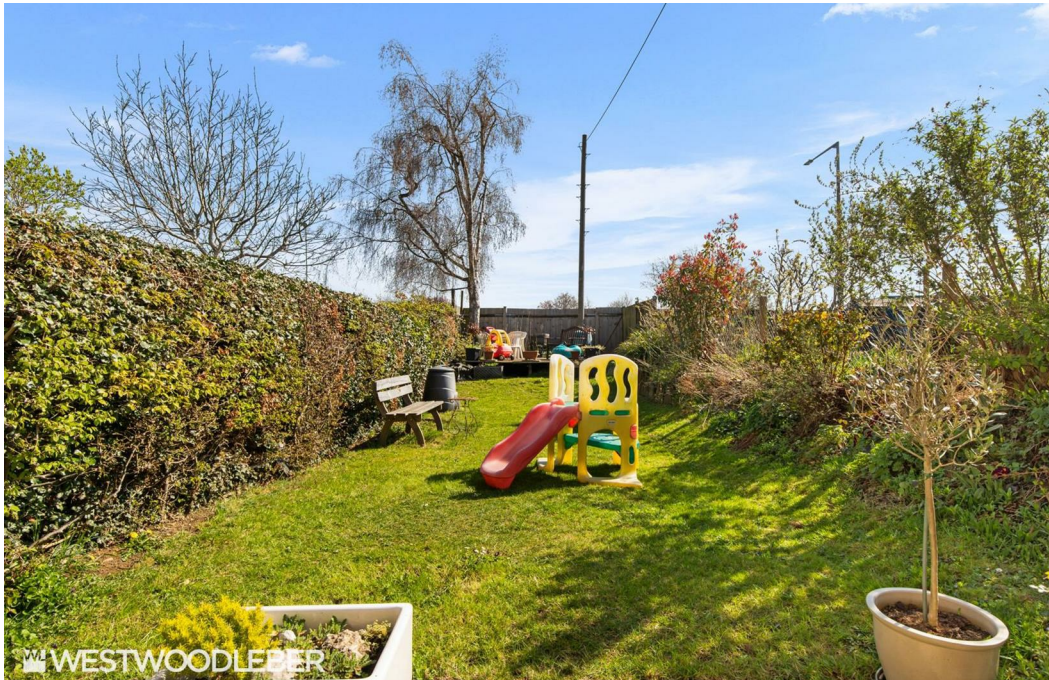




WESTWOODLEBER



WESTWOODLEBER



WESTWOODLEBER



WESTWOODLEBER



