





Crouchfield, Chapmore End, Ware, SG12 0QY

Westwood Leber are delighted to bring to the market this beautiful two-bedroom house, perfectly positioned within a peaceful rural mews location, surrounded by open countryside. Despite its tranquil setting, the property is located no more than two miles from both Hertford and Ware town centres, with their many varied facilities.

This immaculately presented home enjoys an excellent specification throughout, including an attractive re-fitted kitchen, a modern white bathroom suite, and charming landscaped gardens to the rear. There is also ample residents' parking, including one allocated space.

This property is being offered chain-free, and we highly recommend an internal viewing.



WESTWOODLEBER

WESTWOODLEBER
LET US GUIDE YOU HOME

Ground Floor

Approx. 32.1 sq. metres (345.9 sq. feet)



Living Room

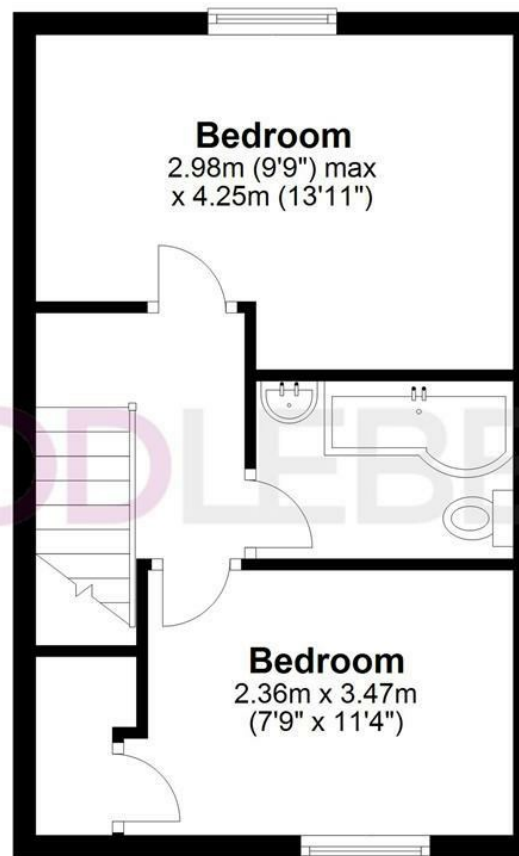
4.17m (13'8") max
x 4.25m (13'11")

Kitchen

2.84m x 2.35m
(9'4" x 7'8")

First Floor

Approx. 30.2 sq. metres (325.4 sq. feet)



Bedroom

2.98m (9'9") max
x 4.25m (13'11")

Bedroom

2.36m x 3.47m
(7'9" x 11'4")

Total area: approx. 62.4 sq. metres (671.3 sq. feet)

THE FLOORPLAN IS FOR ILLUSTRATIVE PURPOSES ONLY AND IS NOT TO SCALE. Measurements and features are approximate and may differ from the actual property. Verify all details independently; no liability is accepted for errors or omissions.

Property marketing provided by www.fotomarketing.co.uk







