



WESTWOODLEBER

WESTWOODLEBER
LET US GUIDE YOU HOME

Rags Lane, Cheshunt, Waltham Cross, EN7 6TF
£475,000



Rags Lane, Cheshunt, Waltham Cross, EN7 6TF

Westwood Leber is thrilled to present this beautifully appointed two-bedroom end-of-terrace home in the highly sought-after area of West Cheshunt. Offered to the market chain-free, this property features a spacious lounge/diner with a contemporary media wall and electric fireplace, leading into a stunningly refitted kitchen. The layout includes two generous double bedrooms and a well-appointed family bathroom.

Externally, you'll find a charming landscaped garden and convenient parking right at your doorstep. The property is conveniently located near local shops, transport links, and schools. An early viewing is highly recommended!

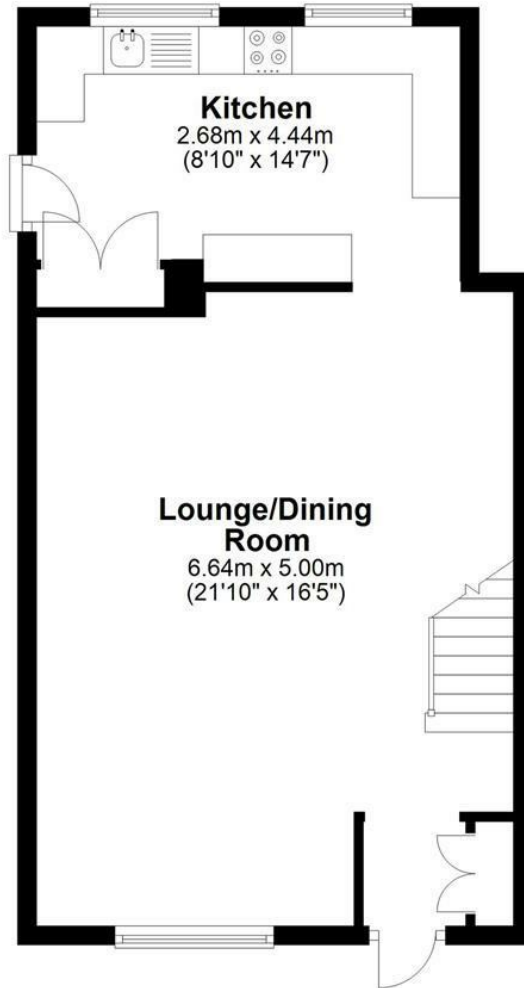


WESTWOODLEBER

WESTWOODLEBER
LET US GUIDE YOU HOME

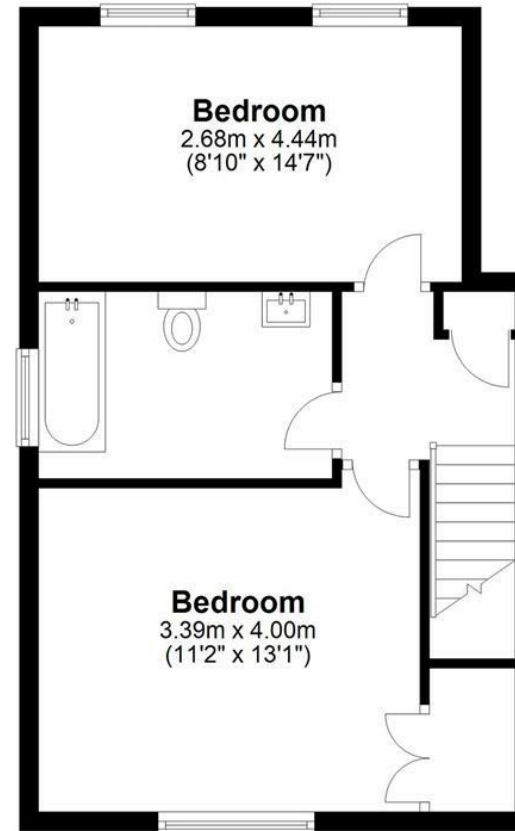
Ground Floor

Approx. 45.6 sq. metres (490.4 sq. feet)



First Floor

Approx. 40.3 sq. metres (434.3 sq. feet)



Total area: approx. 85.9 sq. metres (924.7 sq. feet)

FOR ILLUSTRATIVE PURPOSES ONLY. NOT TO SCALE

Whilst every attempt has been made to ensure the accuracy of the floor plan shown, all measurements, positioning, fixtures, features, fittings and any other data shown are an approximate interpretation for illustrative purposes only and are not to scale. No responsibility is taken for any error, omission, miss-statement or use of data shown.

Property marketing provided by www.matthewkyle.co.uk



