

## Elmer Close, Hoddesdon, EN11 8FS

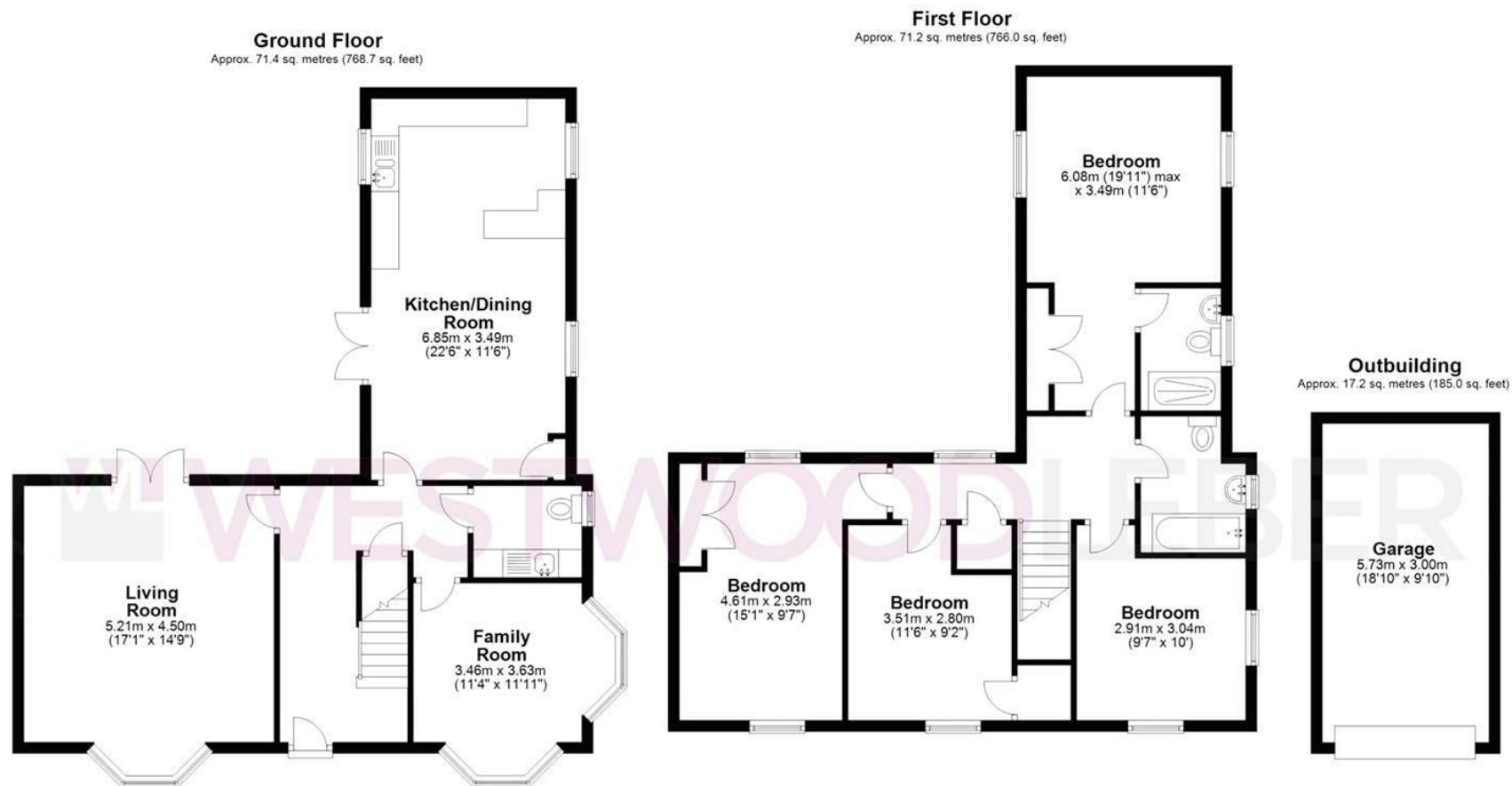
**\*\* OFFERED CHAIN FREE \*\*** Westwood Leber are delighted to bring to the market this exceptional recently built four-bedroom detached house, offering modern, stylish living with exceptional attention to detail. The property includes an NHBC warranty, providing peace of mind to any homeowner.

The accommodation comprises an impressive entrance hall leading to three reception rooms on the ground floor: a spacious family/dining room, a comfortable lounge, and a breakfast room. The kitchen is fitted with high-spec appliances, perfect for cooking and entertaining, alongside a utility room and a ground floor cloakroom. Upstairs, the master bedroom features a luxurious en-suite shower room, while the three additional bedrooms provide ample space for a growing family or guests. The beautifully designed family bathroom offers a serene space for relaxation. The house benefits from double-glazed windows and gas central heating, ensuring year-round comfort.

Externally, the property includes a single garage, off-street parking, and is located just off the A10, providing easy access to local amenities. Future development plans for the area include a new primary school, play areas, and sports facilities, making this an ideal family home.



**WESTWOODLEBER**



Total area: approx. 159.8 sq. metres (1719.7 sq. feet)

FOR ILLUSTRATIVE PURPOSES ONLY. NOT TO SCALE

Whilst every attempt has been made to ensure the accuracy of the floor plan shown, all measurements, positioning, fixtures, features, fittings and any other data shown are an approximate interpretation for illustrative purposes only and are not to scale. No responsibility is taken for any error, omission, miss-statement or use of data shown.

[Property marketing provided by www.fotomarketing.co.uk](http://www.fotomarketing.co.uk)









WESTWOODLEBER



WESTWOODLEBER



WESTWOODLEBER



WESTWOODLEBER





















 WESTWOODLEBER