



WV WESTWOODLEBER

WV WESTWOODLEBER
LET US GUIDE YOU HOME

Abbottsfield Cottages, Wareside, Ware, SG12 7RY
£489,995



Abbottsfield Cottages, Wareside, Ware, SG12 7RY

Westwood Leber are delighted to bring to the market this fantastic three-bedroom end-of-terrace new-build home, perfectly positioned in the highly sought-after village of Wareside, offering stunning views of the rolling countryside. This charming property has just been completed and benefits from accommodation comprising a well-sized living room, a luxurious kitchen/dining room, a ground floor W/C, a first-floor luxury bathroom, and three generously sized bedrooms. The property has been finished to a high specification, including underfloor heating throughout, showcasing a fine example of modern living.

Externally, this property provides off-street parking via a front driveway and boasts two garden areas—one directly accessible from the house and a second, larger space to the side. We highly recommend an internal viewing.

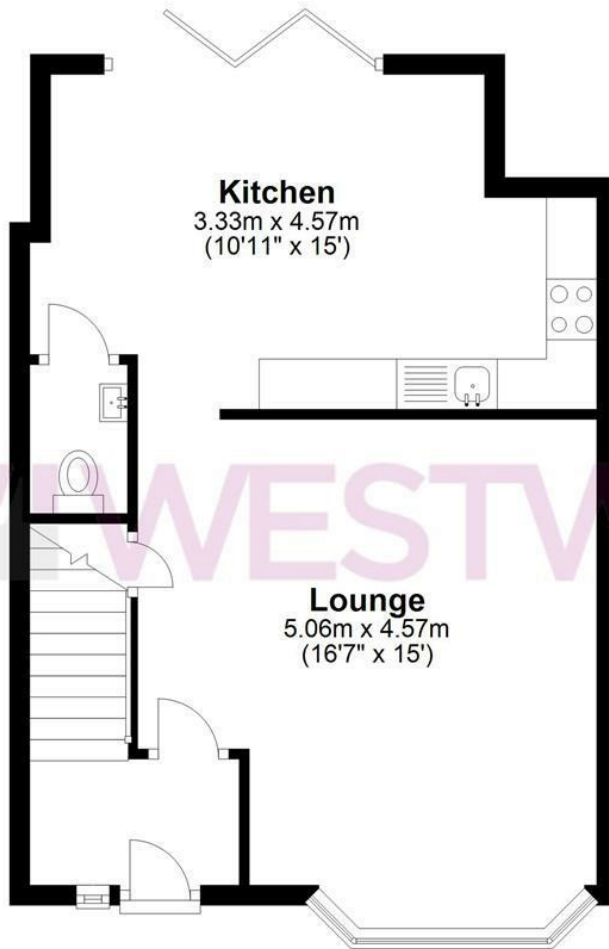


W^L WESTWOODLEBER

W^L WESTWOODLEBER
LET US GUIDE YOU HOME

Ground Floor

Approx. 48.1 sq. metres (517.3 sq. feet)

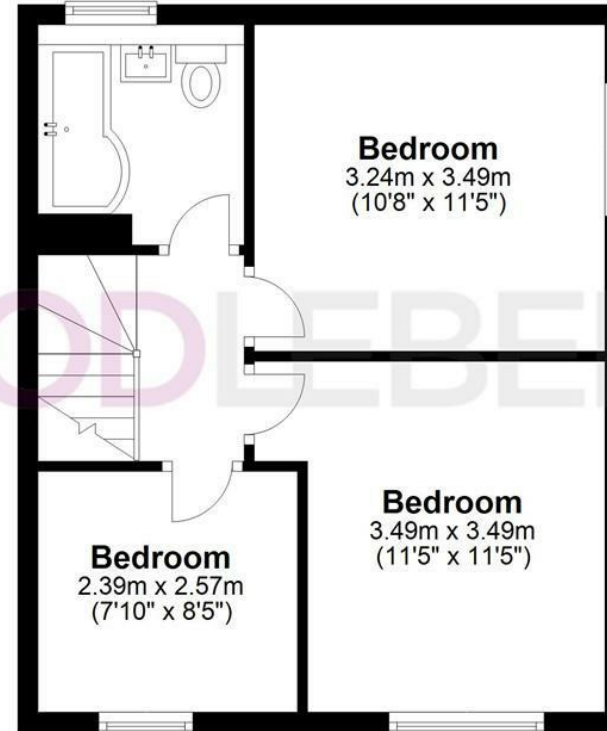


Kitchen
3.33m x 4.57m
(10'11" x 15')

Lounge
5.06m x 4.57m
(16'7" x 15')

First Floor

Approx. 38.5 sq. metres (413.9 sq. feet)



Bedroom
3.24m x 3.49m
(10'8" x 11'5")

Bedroom
2.39m x 2.57m
(7'10" x 8'5")

Bedroom
3.49m x 3.49m
(11'5" x 11'5")

Total area: approx. 86.5 sq. metres (931.2 sq. feet)

THE FLOORPLAN IS FOR ILLUSTRATIVE PURPOSES ONLY AND IS NOT TO SCALE. Measurements and features are approximate and may differ from the actual property. Verify all details independently; no liability is accepted for errors or omissions.

Property marketing provided by www.fotomarketing.co.uk







