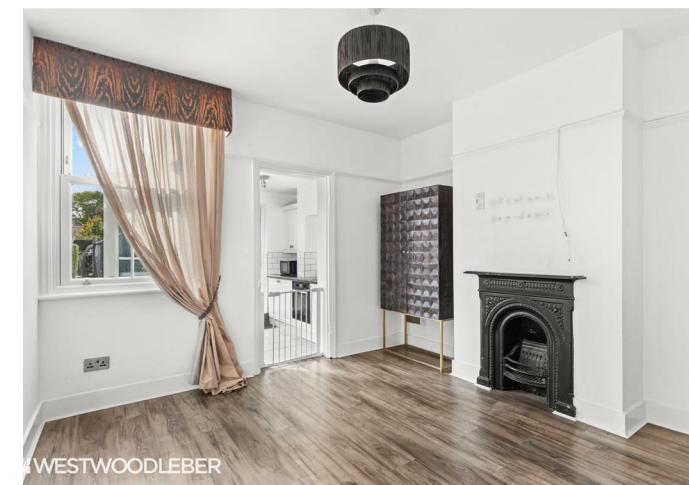




WILWESTWOODLEBER

WILWESTWOODLEBER
LET US GUIDE YOU HOME

Westlea Road, Wormley, Broxbourne, EN10 6JH
£389,995



Westlea Road, Wormley, Broxbourne, EN10 6JH

Westwood Leber are delighted to bring to the market this deceptively spacious three bedroom Victorian cottage, offered chain-free and ready to purchase! The property is well-presented throughout, seamlessly blending period character with modern style. The accommodation includes two reception rooms, a galley kitchen with a separate utility area, a ground floor bathroom, and three first-floor bedrooms.

Externally, the property boasts classic Victorian charm from the front and features a beautifully maintained rear garden with artificial grass, leading to off-street parking—a rare benefit for this type of home. We highly recommend an internal viewing.

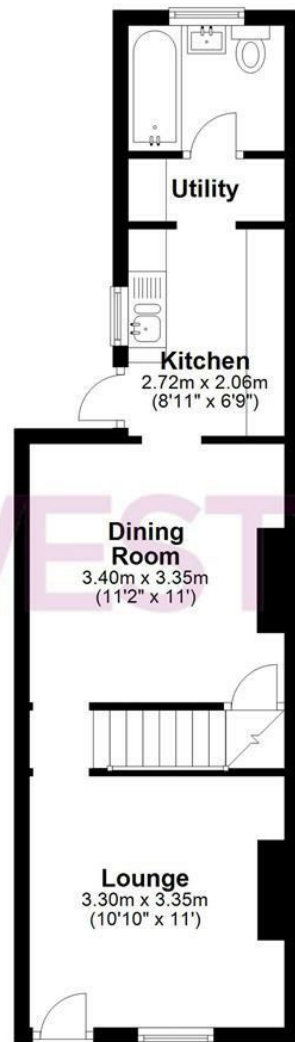


W WESTWOODLEBER

W WESTWOODLEBER
LET US GUIDE YOU HOME

Ground Floor

Approx. 37.0 sq. metres (398.0 sq. feet)



First Floor

Approx. 31.5 sq. metres (338.9 sq. feet)



Total area: approx. 68.5 sq. metres (736.8 sq. feet)

THE FLOORPLAN IS FOR ILLUSTRATIVE PURPOSES ONLY AND IS NOT TO SCALE. Measurements and features are approximate and may differ from the actual property. Verify all details independently; no liability is accepted for errors or omissions.

[Property marketing provided by www.fotomarketing.co.uk](http://www.fotomarketing.co.uk)





