



WESTWOODLEBER
LET US GUIDE YOU HOME

High Street, Puckeridge, SG11 1RN
Guide price £475,000



High Street, Puckeridge, SG11 1RN

Westwood Leber is delighted to bring to the market this stunning three-bedroom property, situated just off the charming High Street in Puckeridge. This beautiful home has undergone a complete transformation, with the current owners recently completing one of the finest full refurbishments you will see. It seamlessly combines a wealth of character with stylish modern decor.

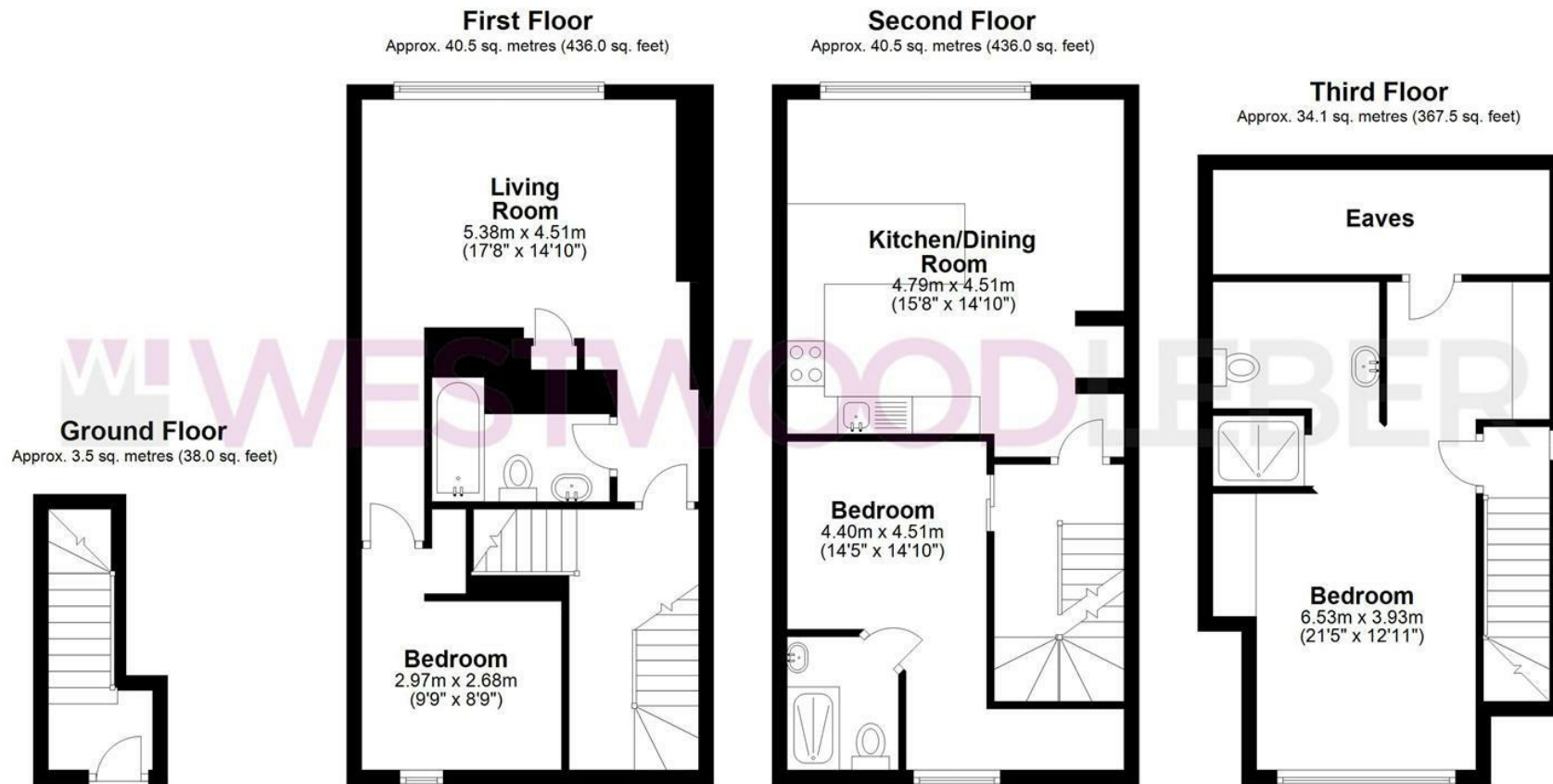
Spanning four floors, the accommodation features three bedrooms, two en suites, a spacious sitting room, and a luxurious kitchen/dining area. Additional perks include ample off-street parking.

This unique property is offered chain-free and is not to be missed.



W WESTWOODLEBER

W WESTWOODLEBER
LET US GUIDE YOU HOME



Total area: approx. 118.7 sq. metres (1277.5 sq. feet)

THE FLOORPLAN IS FOR ILLUSTRATIVE PURPOSES ONLY AND IS NOT TO SCALE. Measurements and features are approximate and may differ from the actual property. Verify all details independently; no liability is accepted for errors or omissions.

Property marketing provided by www.fotomarketing.co.uk







WESTWOODLEBER



WESTWOODLEBER



WESTWOODLEBER



WESTWOODLEBER





WESTWOODLEBER



WESTWOODLEBER



WESTWOODLEBER

