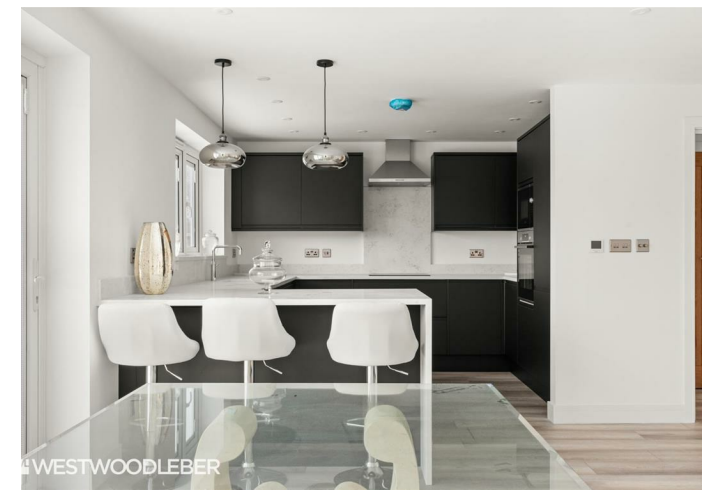




WESTWOODLEBER
LET US GUIDE YOU HOME

Walnut Tree Close, Hoe Lane, Nazeing, EN9 2RJ
Guide price £895,000



Walnut Tree Close, Hoe Lane, Nazeing, EN9 2RJ

Westwood Leber is thrilled to present this exceptional private development featuring just six substantial detached family homes (approximately 2560 sq ft each). These homes are ideally situated in a charming, quiet, semi-rural location, with some plots offering picturesque views of the fields to the rear.

These deceptively spacious homes are spread across three floors, with the top floor dedicated to an impressive principal bedroom suite that includes a large bedroom with a Velux balcony offering stunning views, and a spacious en-suite.

Inside, the properties boast an excellent specification. The accommodation includes: Ground Floor: Hallway, cloakroom, living room with a log burner, and a large kitchen/dining/family room. First Floor: Bedroom with en-suite, two additional bedrooms, a study/box room, and a family bathroom. Second Floor: Principal bedroom with en-suite.

Externally, the properties offer generous outdoor spaces with large rear gardens, front driveways, and EV charging points. These beautiful homes are located within a gated development and truly must be seen to be fully appreciated.



WV WESTWOODLEBER

WV WESTWOODLEBER
LET US GUIDE YOU HOME



Total area: approx. 190.0 sq. metres (2044.7 sq. feet)

FOR ILLUSTRATIVE PURPOSES ONLY. NOT TO SCALE. Whilst every attempt had been made to ensure the accuracy of the floor plan shown, all measurements, positioning, fixtures, features, fittings and any other data shown are an approximate interpretation for illustrative purposes only and are not to scale. No responsibility is taken for any error, omission, miss-statement or use of data shown.

Property marketing provided by www.fotomarketing.co.uk
Plan produced using PlanUp.









