



WWW.WESTWOODLEBER

WESTWOODLEBER
LET US GUIDE YOU HOME

High Street, Hoddesdon, EN11 8UX
£193,500



High Street, Hoddesdon, EN11 8UX

Westwood Leber are delighted to present this immaculately maintained one-bedroom ground-floor retirement apartment for the over-60s, ideally situated in the heart of Hoddesdon, just a short walk from the town centre. The apartment features a spacious lounge/diner with unique access to a secluded garden, offering a level of privacy similar to having your own private space—something not common with other ground-floor flats. Additional highlights include an updated shower room/WC, a refitted kitchen, two residents' lounges, a 24-hour care line, a guest suite, electric heating, and double glazing.

Externally, the property benefits from well-kept communal gardens and communal parking. It is ideally located within the development on a rarely available end plot, which includes a kitchen window and access to particularly private communal gardens.

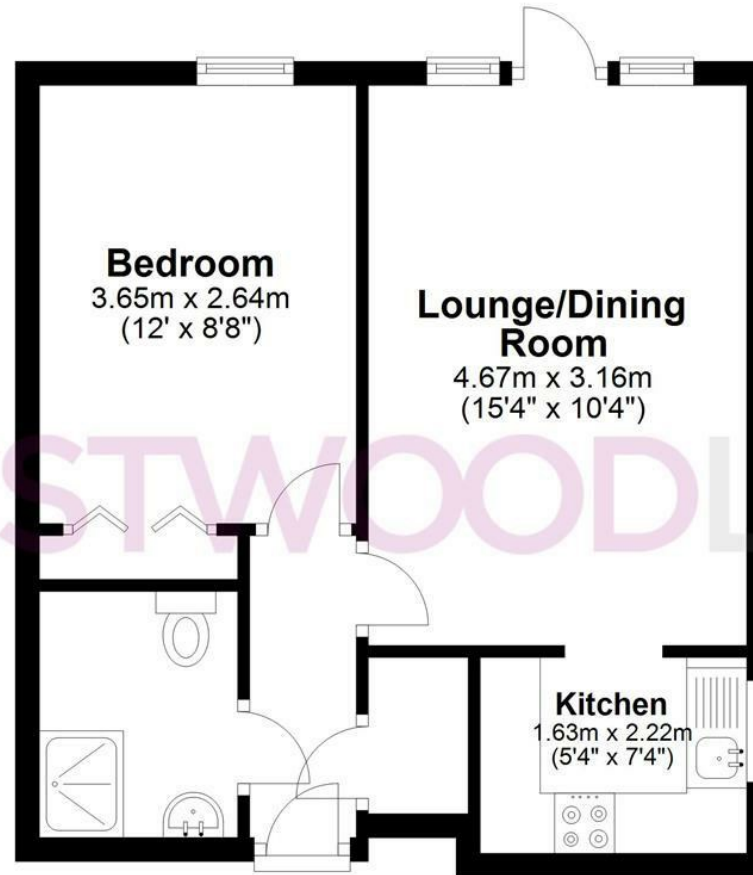


 WESTWOODLEBER

 WESTWOODLEBER
LET US GUIDE YOU HOME

Ground Floor

Approx. 37.0 sq. metres (398.6 sq. feet)



Total area: approx. 37.0 sq. metres (398.6 sq. feet)

THE FLOORPLAN IS FOR ILLUSTRATIVE PURPOSES ONLY AND IS NOT TO SCALE. Measurements and features are approximate and may differ from the actual property. Verify all details independently; no liability is accepted for errors or omissions.

[Property marketing provided by www.fotomarketing.co.uk](http://www.fotomarketing.co.uk)







WESTWOODLEBER