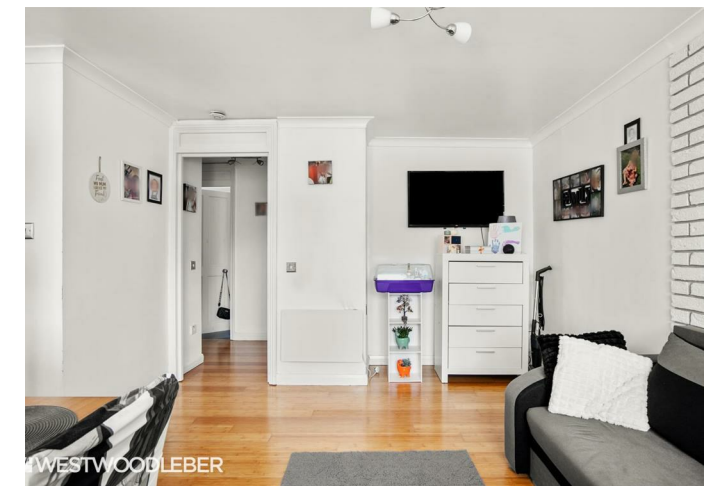




WESTWOODLEBER
LET US GUIDE YOU HOME

High Road, Broxbourne, EN10 7BN
£259,995



High Road, Broxbourne, EN10 7BN

Westwood Leber is thrilled to present this beautifully maintained two-bedroom apartment, located in a highly sought-after area of Broxbourne. This immaculate property boasts a range of features, including a central location, two generously sized bedrooms, a modern fitted kitchen, and a spacious open-plan lounge, offering a stylish and comfortable living environment. Further benefits include allocated parking, ensuring both convenience and ease of access.



WESTWOODLEBER

Ground Floor

Approx. 40.4 sq. metres (434.8 sq. feet)



Total area: approx. 40.4 sq. metres (434.8 sq. feet)

THE FLOORPLAN IS FOR ILLUSTRATIVE PURPOSES ONLY AND IS NOT TO SCALE.
Measurements and features are approximate and may differ from the actual property. Verify all details independently; no liability is accepted for errors or omissions.

[Property marketing provided by www.fotomarketing.co.uk](http://www.fotomarketing.co.uk)





WESTWOODLEBER