



WESTWOODLEBER
LET US GUIDE YOU HOME

Roydon Road, Stanstead Abbots, Ware, SG12 8EZ

£475,000



Roydon Road, Stanstead Abbots, Ware, SG12 8EZ

Westwood Leber is thrilled to introduce this delightful Victorian cottage, ideally located near the esteemed St. Andrews Primary School, Stanstead Abbots High Street, and St. Margaret's railway station. This deceptively spacious home has been thoughtfully updated and meticulously maintained by the current owners, showcasing a perfect blend of modern living and period charm. The property retains many original features, such as high ceilings, sash windows, and elegant cast iron fireplaces, adding to its timeless appeal.

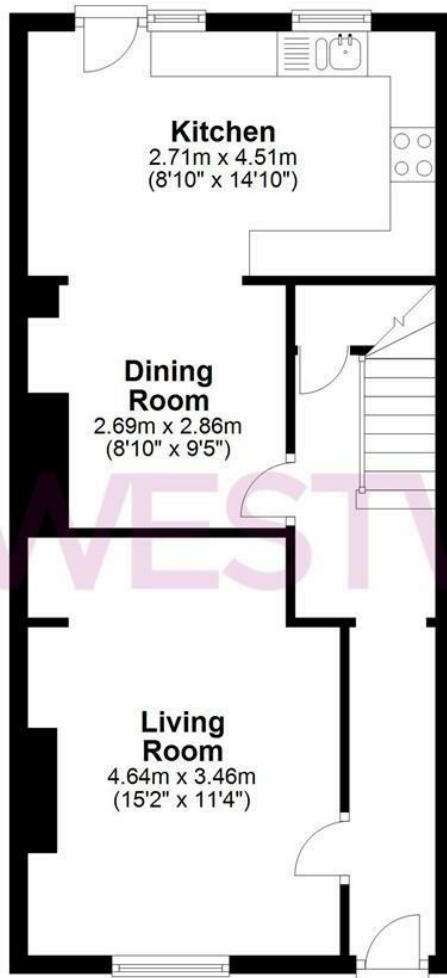
The accommodation includes a welcoming reception hall, a cozy living room with a striking feature fireplace, and a generously sized open-plan kitchen/dining area, perfect for entertaining. Upstairs, the home offers three well-proportioned bedrooms and a large family bathroom. Externally, the property boasts a charming walled front garden and a beautifully landscaped rear garden, thoughtfully designed for low-maintenance living.



 WESTWOODLEBER

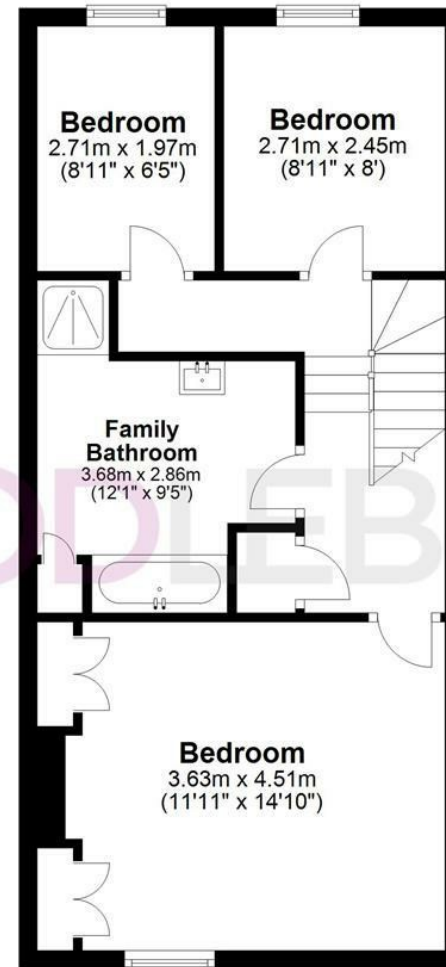
Ground Floor

Approx. 46.1 sq. metres (496.4 sq. feet)



First Floor

Approx. 46.1 sq. metres (496.4 sq. feet)



Total area: approx. 92.2 sq. metres (992.8 sq. feet)

THE FLOORPLAN IS FOR ILLUSTRATIVE PURPOSES ONLY AND IS NOT TO SCALE. Measurements and features are approximate and may differ from the actual property. Verify all details independently; no liability is accepted for errors or omissions.

[Property marketing provided by www.fotomarketing.co.uk](http://www.fotomarketing.co.uk)







WESTWOODLEBER



WESTWOODLEBER



WESTWOODLEBER



WESTWOODLEBER



