

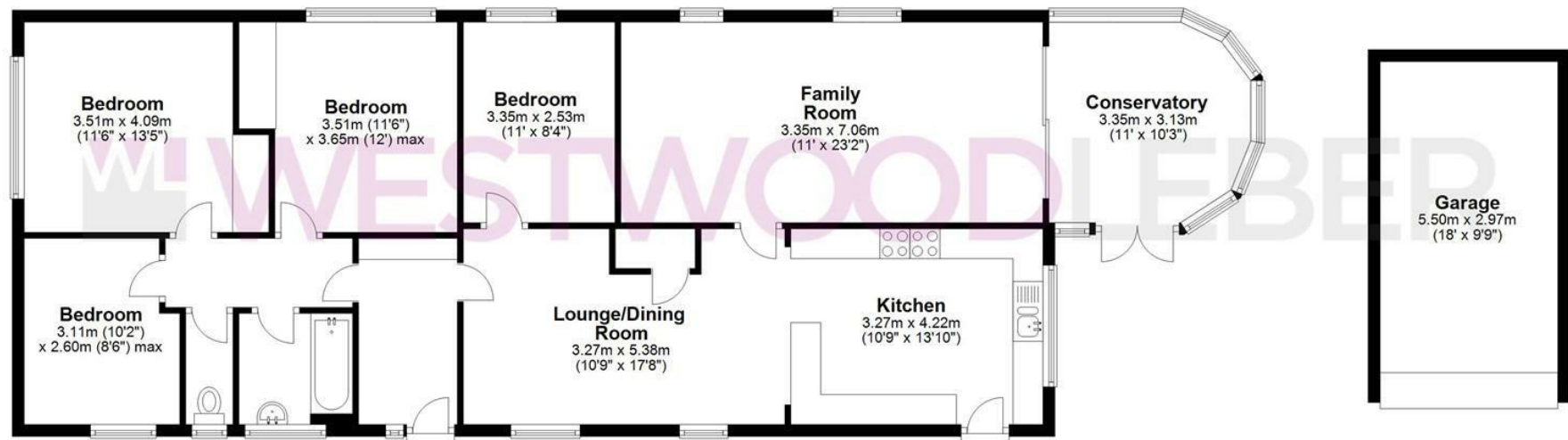
Benford Road, Hoddesdon, EN11 8LW

**** OFFERED CHAIN FREE **** Westwood Leber are delighted to bring to the market this rarely available four bedroom detached bungalow located on the border of Hoddesdon and Broxbourne. This fantastic property has been well kept by the current owners and offers versatile living accommodation throughout; comprising of a large kitchen/ lounge/ diner, separate lounge, conservatory and a large garden offering further scope to extended STPP. Further benefits include four large bedrooms, a three-piece bathroom suite and a separate w/c. The property also boasts off-street parking, a large garage and offers further scope to extend STPP. An internal viewing is highly recommended.



Ground Floor

Approx. 141.5 sq. metres (1523.5 sq. feet)



Total area: approx. 141.5 sq. metres (1523.5 sq. feet)

THE FLOORPLAN IS FOR ILLUSTRATIVE PURPOSES ONLY AND IS NOT TO SCALE. Measurements and features are approximate and may differ from the actual property. Verify all details independently; no liability is accepted for errors or omissions.

Property marketing provided by www.fotomarketing.co.uk









