



W WESTWOODLEBER

**W WESTWOODLEBER**  
LET US GUIDE YOU HOME

Sheredes Drive, Hoddesdon, EN11 8LJ  
£899,995



## Sheredes Drive, Hoddesdon, EN11 8LJ

Westwood Leber is delighted to present this exceptional five-bedroom detached family home, which has recently undergone an extensive refurbishment by the current owners. Ideally positioned within a quiet cul-de-sac on the border of Hoddesdon and Broxbourne, the property is just a short walk from Sheredes Primary School.

The property has been thoughtfully extended and offers deceptively spacious and immaculately presented accommodation throughout. The ground floor comprises three reception rooms, a large kitchen/breakfast room, and a WC. On the first floor, there are five double bedrooms and two bathrooms.

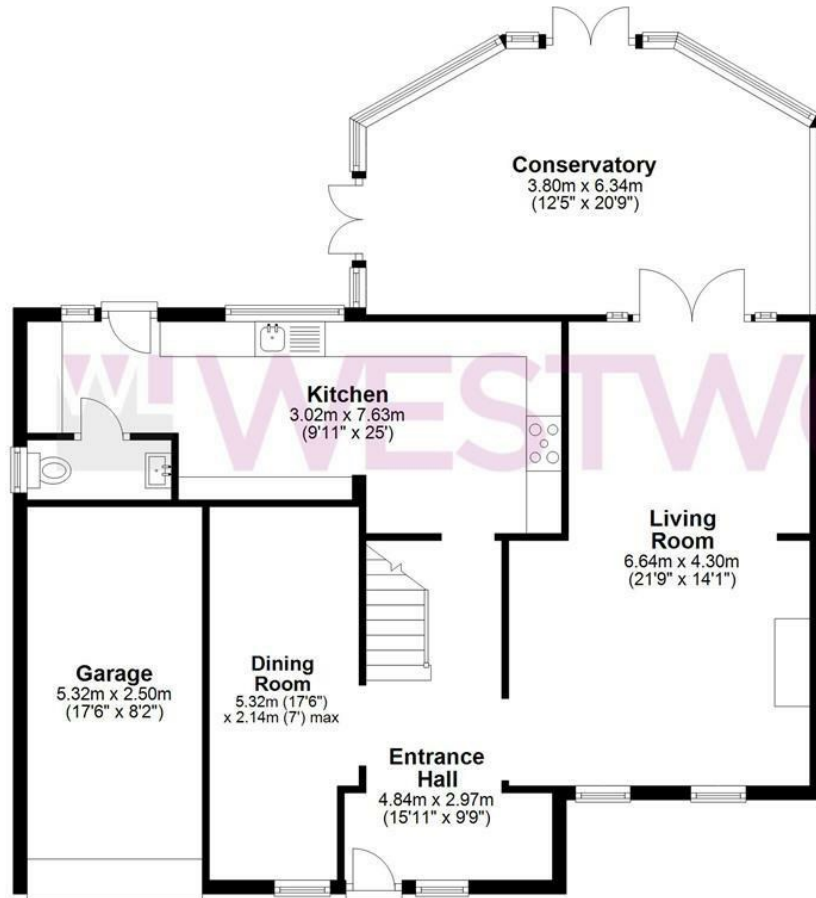
Externally, the property is situated on a superb plot with ample parking on the front driveway, a garage, and a fantastic south-facing rear garden. This property is offered CHAIN-FREE and is ready for immediate viewing.



WESTWOODLEBER

### Ground Floor

Approx. 106.5 sq. metres (1146.7 sq. feet)



### First Floor

Approx. 80.6 sq. metres (867.3 sq. feet)



Total area: approx. 187.1 sq. metres (2014.0 sq. feet)

THE FLOORPLAN IS FOR ILLUSTRATIVE PURPOSES ONLY AND IS NOT TO SCALE. Measurements and features are approximate and may differ from the actual property. Verify all details independently; no liability is accepted for errors or omissions.

[Property marketing provided by www.fotomarketing.co.uk](http://www.fotomarketing.co.uk)







WESTWOODLEBER



WESTWOODLEBER



WESTWOODLEBER



WESTWOODLEBER



WESTWOODLEBER



WESTWOODLEBER



WESTWOODLEBER



WESTWOODLEBER







WESTWOODLEBER



WESTWOODLEBER



WESTWOODLEBER



WESTWOODLEBER



**W WESTWOODLEBER**

**W WESTWOODLEBER**  
LET US GUIDE YOU HOME