



WV WESTWOODLEBER

WV WESTWOODLEBER
LET US GUIDE YOU HOME

Beechfield, Hoddesdon, EN11 9QH
Offers in excess of £500,000



Beechfield, Hoddesdon, EN11 9QH

****OPEN DAY SATURDAY 12TH OCTOBER**** Westwood Leber are delighted to bring to the market this deceptively spacious four bedroom semi-detached family home located on this popular residential development in Hoddesdon. This rarely available family home offers accommodation comprising of a large lounge/ diner, a separate kitchen, downstairs w/c, a well landscaped and low maintenance rear garden, first floor bathroom, front driveway and integral garage with further scope to convert. We would highly recommend an internal viewing.

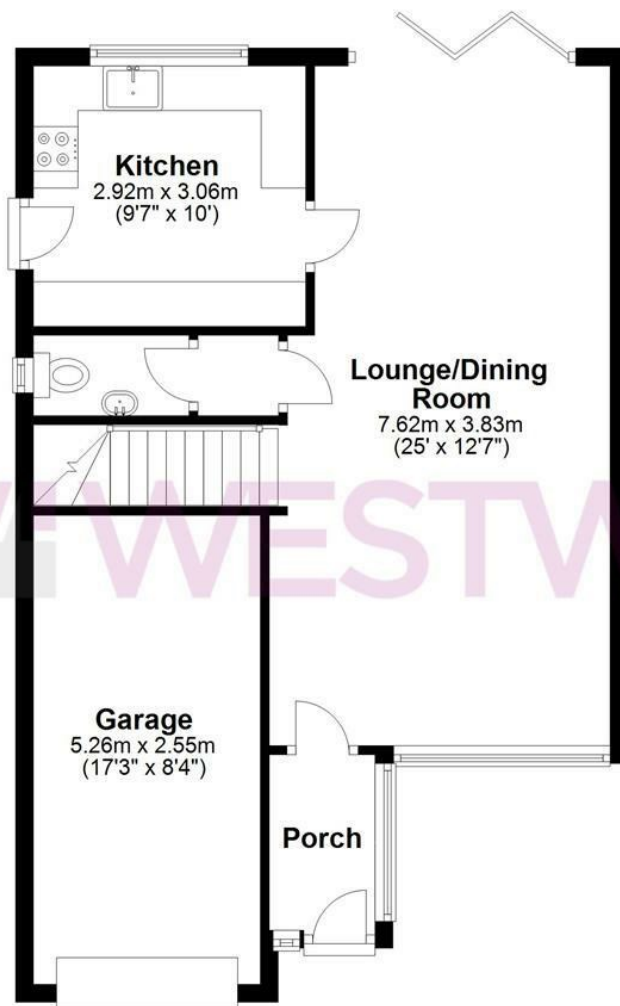


WESTWOODLEBER

WESTWOODLEBER
LET US GUIDE YOU HOME

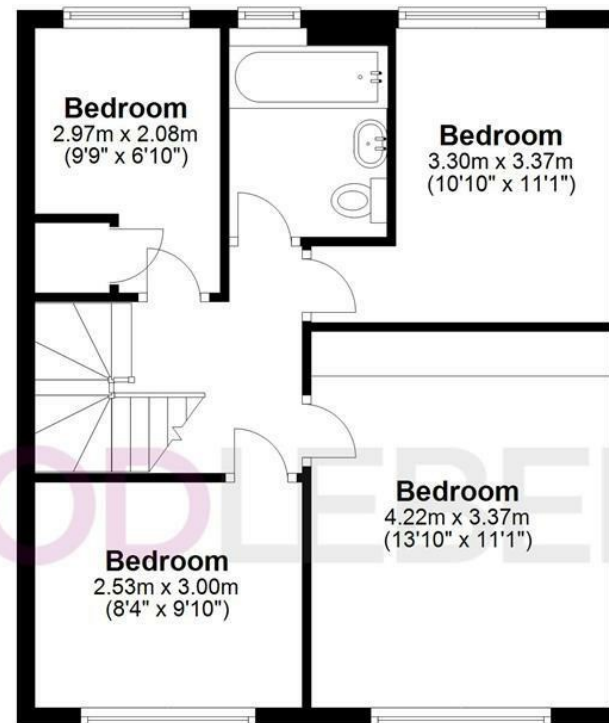
Ground Floor

Approx. 58.8 sq. metres (633.1 sq. feet)



First Floor

Approx. 49.4 sq. metres (531.2 sq. feet)



Total area: approx. 108.2 sq. metres (1164.3 sq. feet)

THE FLOORPLAN IS FOR ILLUSTRATIVE PURPOSES ONLY AND IS NOT TO SCALE. Measurements and features are approximate and may differ from the actual property. Verify all details independently; no liability is accepted for errors or omissions.

[Property marketing provided by www.fotomarketing.co.uk](http://www.fotomarketing.co.uk)





WESTWOODLEBER



WESTWOODLEBER



WESTWOODLEBER



WESTWOODLEBER





WESTWOODLEBER



WESTWOODLEBER



WESTWOODLEBER



WESTWOODLEBER



