



WESTWOODLEBER

WESTWOODLEBER
LET US GUIDE YOU HOME

Hyde Mead, Nazeing, Waltham Abbey, EN9 2HP
£580,000



Hyde Mead, Nazeing, Waltham Abbey, EN9 2HP

Westwood Leber are delighted to bring to the market this well extended four/five bedroom end of terrace family home in this highly sought-after location in Nazeing. This excellent house offers deceptively spacious accommodation throughout which includes a ground floor w/c, a well sized living room, large kitchen/breakfast room and a snug/study. This property is positioned perfectly in Nazeing and also benefits from a private rear garden and large front driveway. An early viewing is highly recommended.

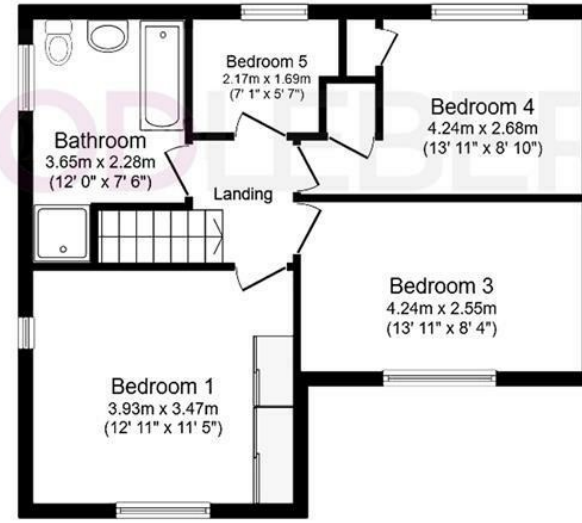


WESTWOODLEBER

WESTWOODLEBER
LET US GUIDE YOU HOME



Ground Floor



First Floor

Total floor area 132.0 sq.m. (1,421 sq.ft.) approx

THE FLOORPLAN IS FOR ILLUSTRATIVE PURPOSES ONLY AND IS NOT TO SCALE. Measurements and features are approximate and may differ from the actual property. Verify all details independently; no liability is accepted for errors or omissions.

Property marketing provided by www.fotomarketing.co.uk









