



**WESTWOODLEBER**  
LET US GUIDE YOU HOME

Cheffins Road, Hoddesdon, EN11 9AS  
£470,000





## Cheffins Road, Hoddesdon, EN11 9AS

Westwood Leber are delighted to bring to the market this beautifully presented three bedroom end of terrace family home located on this popular residential Road within the sought after Roselands Development. This excellent property offers flexible living accommodation throughout the downstairs with further scope to extend STPP. The property boasts three well sized bedrooms and a three-piece bathroom suite.

Further benefits include a well landscaped rear garden and a garage which is currently being utilised as an office. An early viewing is highly recommended!



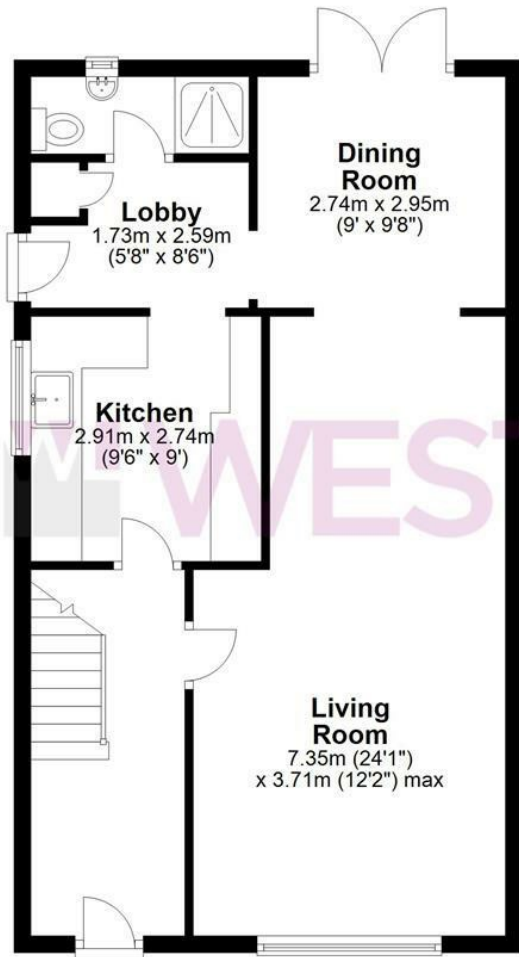
**W WESTWOODLEBER**

**W WESTWOODLEBER**  
LET US GUIDE YOU HOME



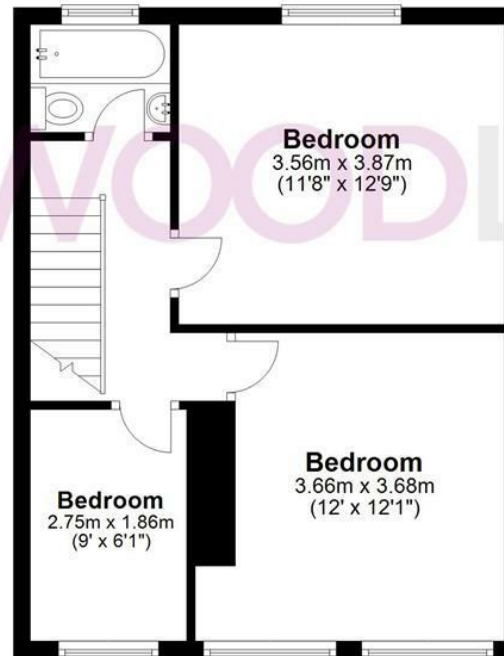
## Ground Floor

Approx. 57.4 sq. metres (618.3 sq. feet)



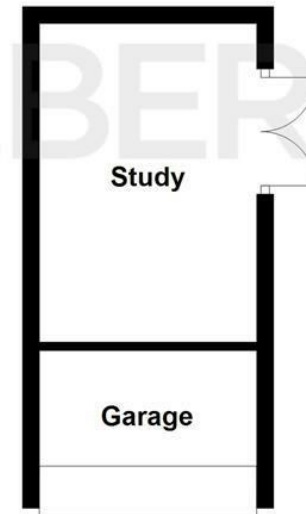
## First Floor

Approx. 41.2 sq. metres (443.8 sq. feet)



## Garage

Approx. 14.3 sq. metres (154.2 sq. feet)



Total area: approx. 113.0 sq. metres (1216.3 sq. feet)

THE FLOORPLAN IS FOR ILLUSTRATIVE PURPOSES ONLY AND IS NOT TO SCALE. Measurements and features are approximate and may differ from the actual property. Verify all details independently; no liability is accepted for errors or omissions.

Property marketing provided by [www.fotomarketing.co.uk](http://www.fotomarketing.co.uk)



WESTWOODLEBER



WESTWOODLEBER



WESTWOODLEBER



WESTWOODLEBER















