



WESTWOODLEBER

WESTWOODLEBER
LET US GUIDE YOU HOME

Hertford Road, Hoddesdon, EN11 9JW
£475,000



Hertford Road, Hoddesdon, EN11 9JW

Westwood Leber are delighted to bring to the market this beautifully presented three bedroom semi-detached family home positioned perfectly in this popular location in Hoddesdon. This excellent house has been updated by the current owners including a three-piece bathroom suite, large open plan lounge/diner with access out to a well presented rear garden with side access. Further benefits include a utility room, downstairs w/c, garage, off street parking and further scope to extend STPP. We would highly recommend an internal viewing!

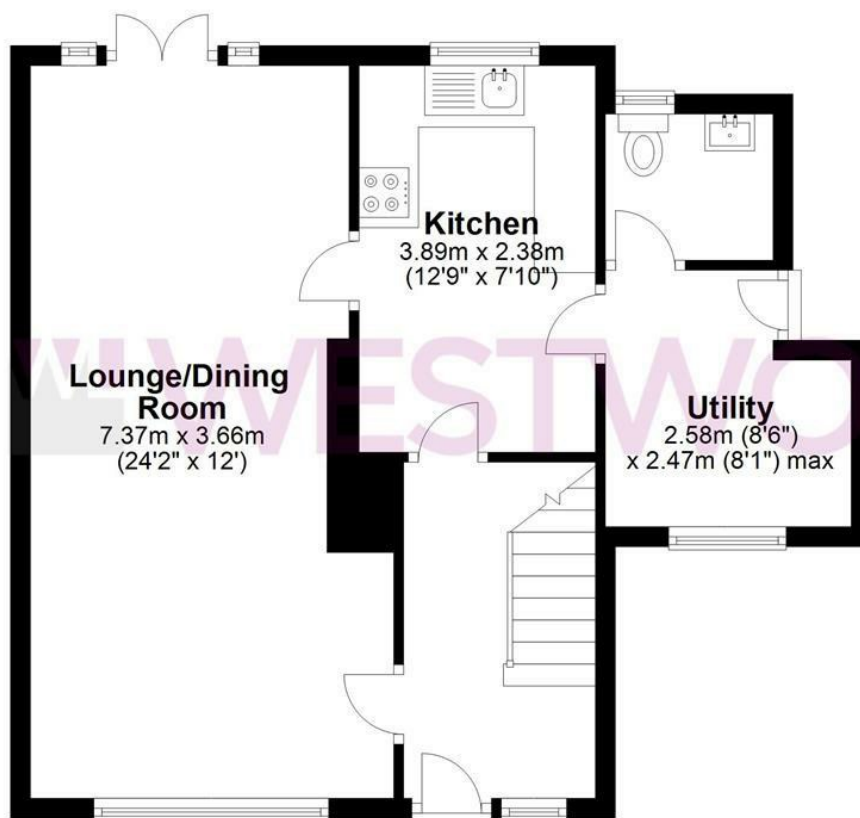


W WESTWOODLEBER

W WESTWOODLEBER
LET US GUIDE YOU HOME

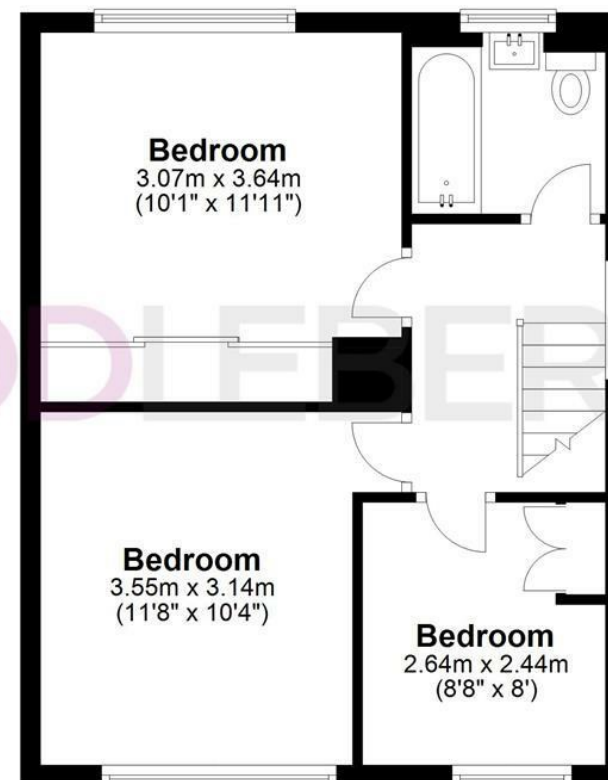
Ground Floor

Approx. 50.6 sq. metres (545.0 sq. feet)



First Floor

Approx. 41.9 sq. metres (450.9 sq. feet)



Total area: approx. 92.5 sq. metres (995.9 sq. feet)

THE FLOORPLAN IS FOR ILLUSTRATIVE PURPOSES ONLY AND IS NOT TO SCALE. Measurements and features are approximate and may differ from the actual property. Verify all details independently; no liability is accepted for errors or omissions.

[Property marketing provided by www.fotomarketing.co.uk](http://www.fotomarketing.co.uk)









