



WILWESTWOODLEBER

WESTWOODLEBER
LET US GUIDE YOU HOME

Cony Close, Cheshunt, Waltham Cross, EN7 6UW
£650,000



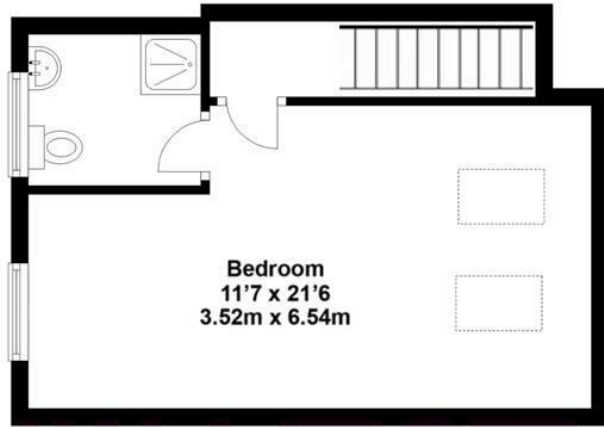
Cony Close, Cheshunt, Waltham Cross, EN7 6UW

Westwood Leber are delighted to bring to the market this well-presented four-bedroom semi-detached family home on this popular residential close in Cheshunt close to local amenities and situated to the West of Cheshunt, close to Brookfield shopping Centre. This property has been extended by the current owners boasting a large 11' x 21' master bedroom with en-suite shower room. Further benefits include a large lounge, a separate kitchen/dining room, three bedrooms on the first floor, a three-piece bathroom suite, a downstairs w/c, a well-maintained rear garden with side access, a single garage, and parking to the side for multiple cars. An internal viewing is highly recommended!

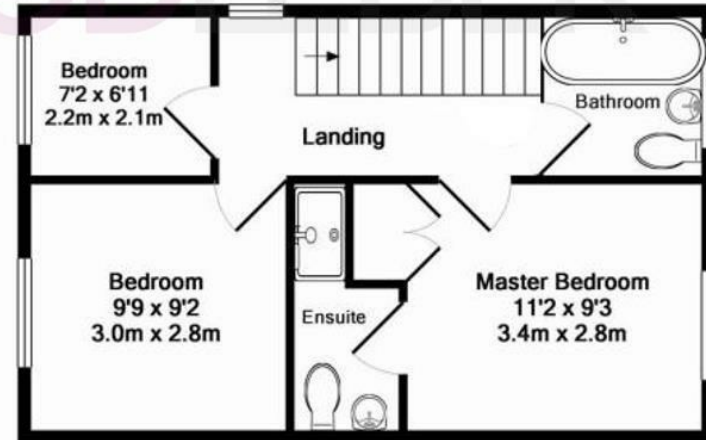
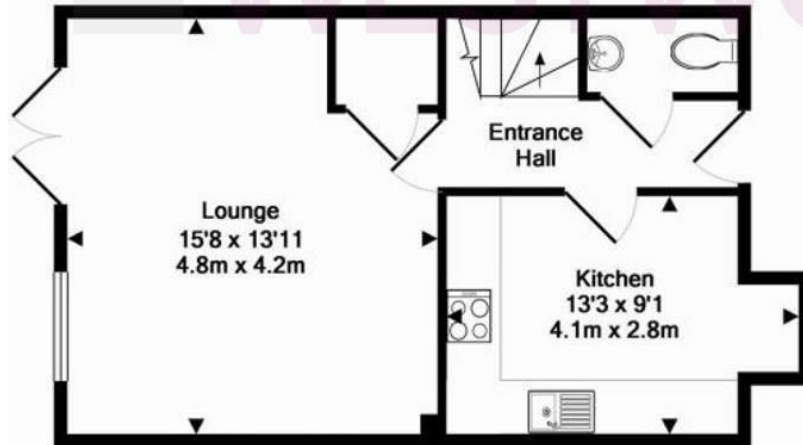
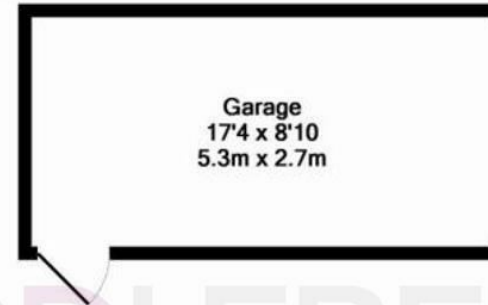


WESTWOODLEBER

WESTWOODLEBER
LET US GUIDE YOU HOME



TOTAL APPROX. FLOOR AREA 1247.6 SQ.FT. (115.9 SQ.M.)











WESTWOODLEBER



WESTWOODLEBER



WESTWOODLEBER



WESTWOODLEBER

