



WV WESTWOODLEBER

WV WESTWOODLEBER
LET US GUIDE YOU HOME

Beyers Gardens, Hoddesdon, EN11 9PY
£475,000



Beyers Gardens, Hoddesdon, EN11 9PY

Westwood Leber are delighted to bring to the market this larger than average three bedroom family home located on a popular cul-de-sac in Hoddesdon. This property offers well presented and deceptively spacious accommodation throughout which includes a large first floor bathroom, three well-sized bedrooms and thoughtfully laid out living space open from the kitchen. Externally this property benefits from a large, well maintained rear garden, large front driveway and a separate garage.



WESTWOODLEBER

WESTWOODLEBER
LET US GUIDE YOU HOME

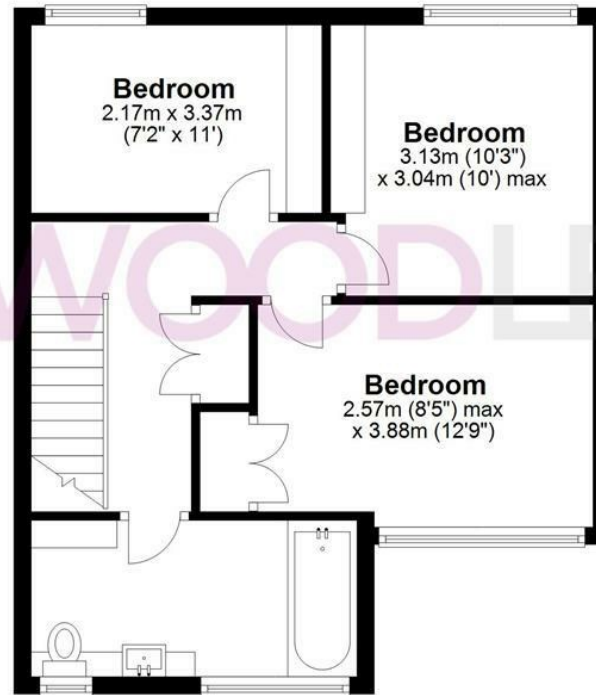
Ground Floor

Approx. 44.7 sq. metres (480.8 sq. feet)



First Floor

Approx. 44.3 sq. metres (476.5 sq. feet)



Garage

Approx. 13.1 sq. metres (140.9 sq. feet)



Total area: approx. 102.0 sq. metres (1098.2 sq. feet)

THE FLOORPLAN IS FOR ILLUSTRATIVE PURPOSES ONLY AND IS NOT TO SCALE. Measurements and features are approximate and may differ from the actual property. Verify all details independently; no liability is accepted for errors or omissions.

[Property marketing provided by www.fotomarketing.co.uk](http://www.fotomarketing.co.uk)







WESTWOODLEBER



WESTWOODLEBER



WESTWOODLEBER



WESTWOODLEBER





 WESTWOODLEBER