



WV WESTWOODLEBER

WV WESTWOODLEBER
LET US GUIDE YOU HOME

Hillside, Hoddesdon, EN11 8RW
£209,995



Hillside, Hoddesdon, EN11 8RW

Westwood Leber are delighted to bring to the market this two bedroom apartment set in a well maintained development. Set on the first floor, this ideal first time purchase or investment opportunity boasts a spacious reception room, separate kitchen with room for washing machine, fridge/freezer and dishwasher and two generous bedrooms. In addition, the property also benefits from a large and useful storage cupboard to the communal hallway. Externally there is an allocated parking space and access to the well maintained communal gardens. The property is a short distance from Hoddesdon town centre with it's many shops and amenities and is also well located for the transport links of the A10 whilst the local train station at Rye House offers passage into London Liverpool Street.

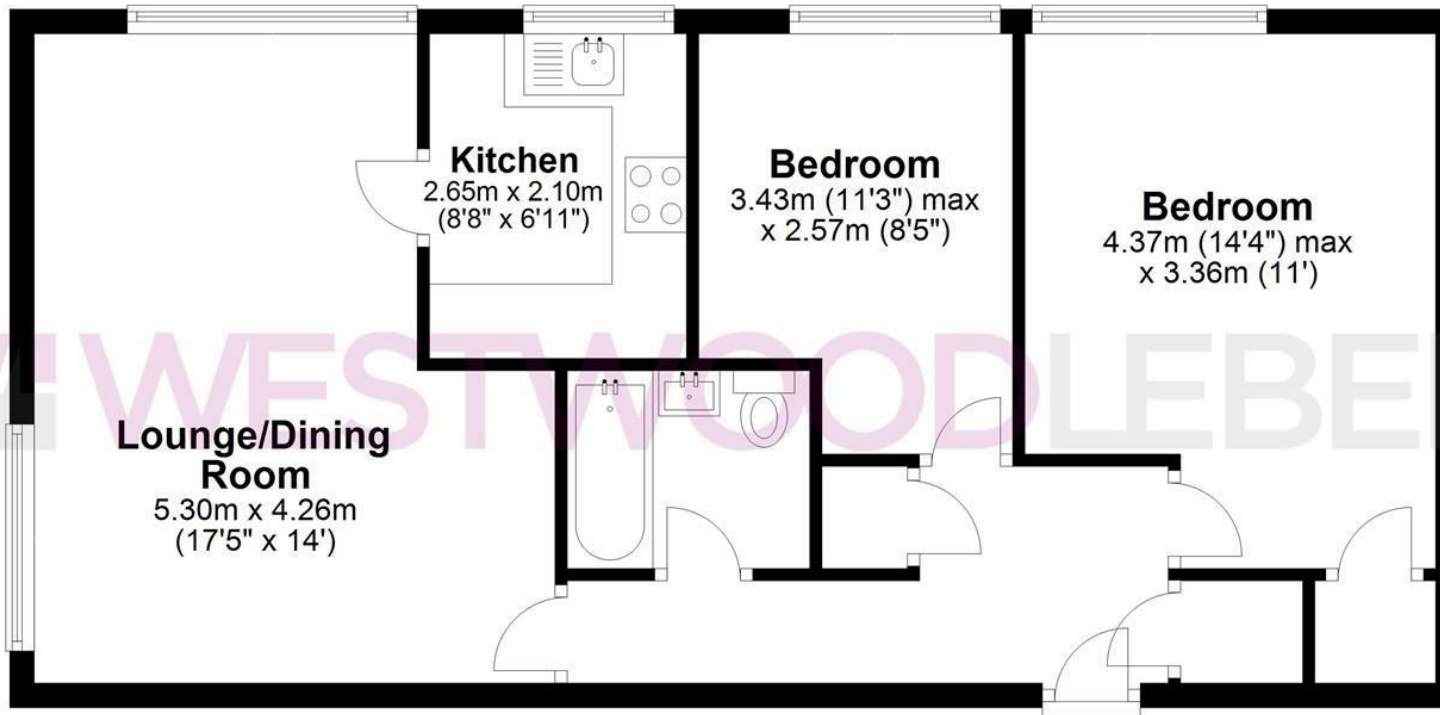


W WESTWOODLEBER

W WESTWOODLEBER
LET US GUIDE YOU HOME

Apartment

Approx. 60.7 sq. metres (653.7 sq. feet)



Total area: approx. 60.7 sq. metres (653.7 sq. feet)

FOR ILLUSTRATIVE PURPOSES ONLY. NOT TO SCALE. Whilst every attempt had been made to ensure the accuracy of the floor plan shown, all measurements, positioning, fixtures, features, fittings and any other data shown are an approximate interpretation for illustrative purposes only and are not to scale. No responsibility is taken for any error, omission, miss-statement or use of data shown.

[Property marketing provided by www.fotomarketing.co.uk](http://www.fotomarketing.co.uk)



WESTWOODLEBER



WESTWOODLEBER



WESTWOODLEBER



WESTWOODLEBER

