



WIMESTWOODLEBER

**WIMESTWOODLEBER**  
LET US GUIDE YOU HOME

Norris Rise, Hoddesdon, EN11 8RE  
£450,000



## Norris Rise, Hoddesdon, EN11 8RE

Westwood Leber are delighted to bring to the market this completely refurbished three double bedroom semi-detached family home on this popular residential road in Hoddesdon, close to Rye House Rail Station and Hoddesdon Town Centre. This property has been tastefully updated and offers flexible living accommodation throughout.

This fantastic family home has been well extended by the current owners and boasts some very desirable features throughout including a fantastic extension with skylight and bi-folding doors leading out onto the well kept and large rear garden. An internal viewing is highly recommended!

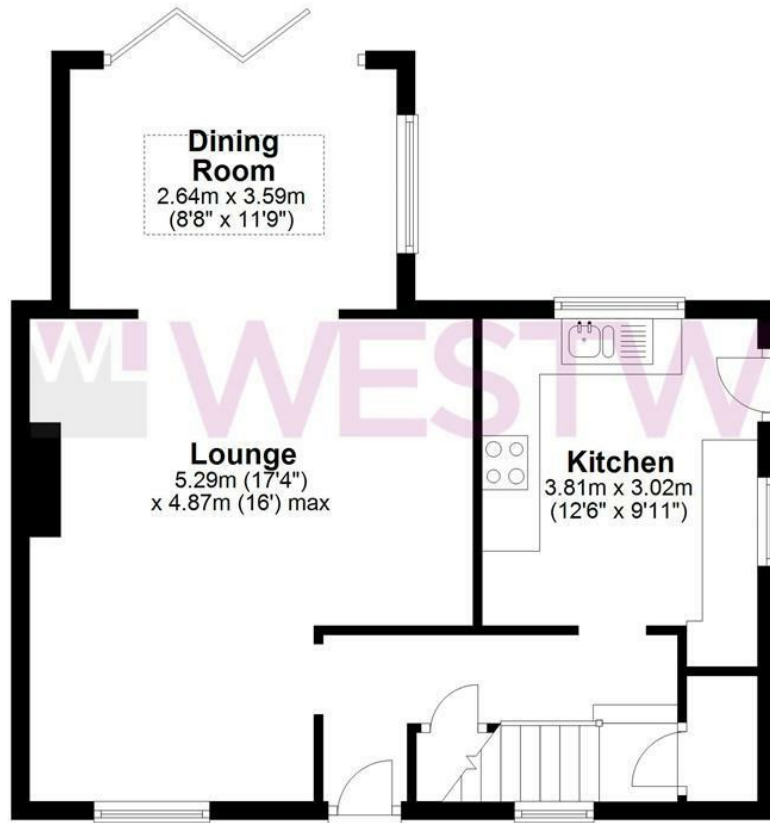


**WESTWOODLEBER**

**WESTWOODLEBER**  
LET US GUIDE YOU HOME

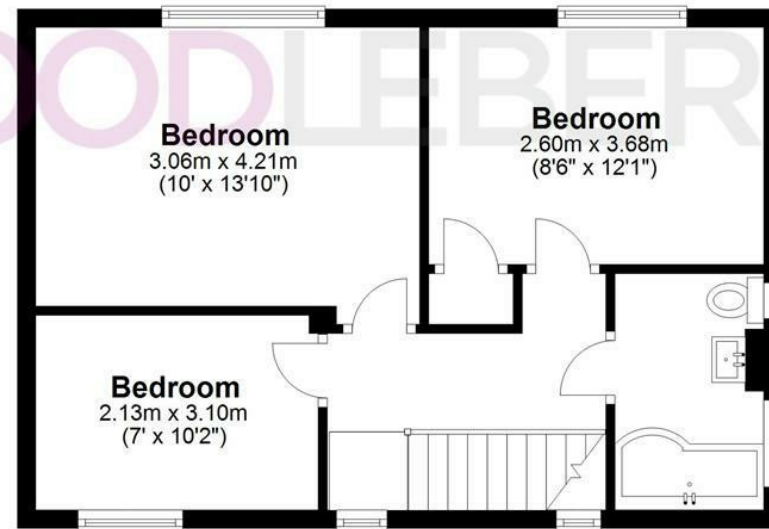
## Ground Floor

Approx. 52.1 sq. metres (560.5 sq. feet)



## First Floor

Approx. 42.3 sq. metres (454.8 sq. feet)



Total area: approx. 94.3 sq. metres (1015.3 sq. feet)

FOR ILLUSTRATIVE PURPOSES ONLY. NOT TO SCALE. Whilst every attempt had been made to ensure the accuracy of the floor plan shown, all measurements, positioning, fixtures, features, fittings and any other data shown are an approximate interpretation for illustrative purposes only and are not to scale. No responsibility is taken for any error, omission, miss-statement or use of data shown.

[Property marketing provided by www.fotomarketing.co.uk](http://www.fotomarketing.co.uk)











