



WESTWOODLEBER
LET US GUIDE YOU HOME

Isabel Court, Hoddesdon, EN11 0LQ
£335,000



Isabel Court, Hoddesdon, EN11 0LQ

Westwood Leber are delighted to bring to the market this beautifully presented two double bedroom split level apartment located in the heart of Hoddesdon, just a short walk from Rye House Rail Station. This fantastic property is located on a popular development just off Walton road and boasts a large open plan kitchen/ lounge/ diner, two well sized double bedroom with a large roof terrace off the master bedroom and a refitted three-piece bathroom suite. Further benefits include a private courtyard garden, allocated parking, ample storage and a downstairs toilet. Internal viewing is highly recommended!



WESTWOODLEBER

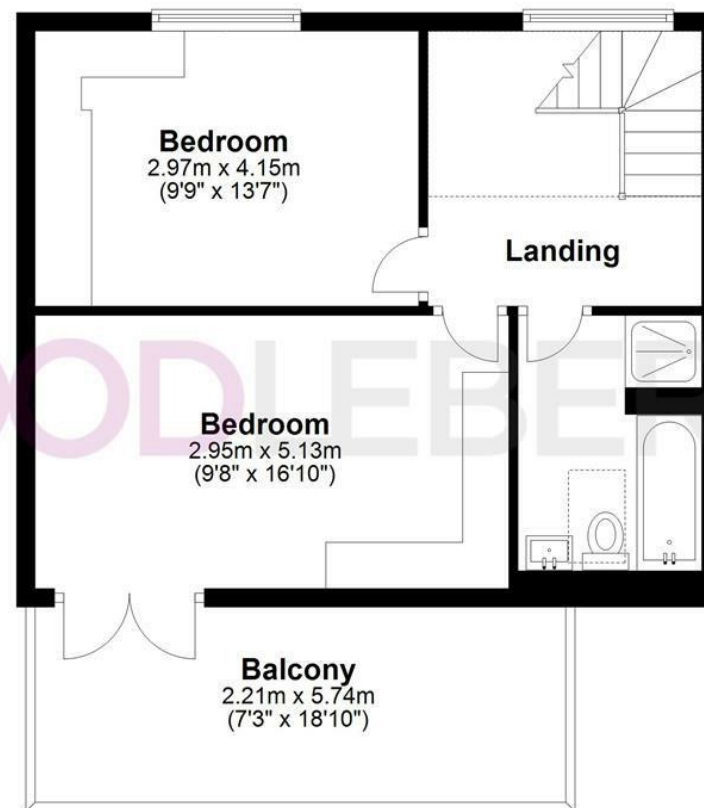
Ground Floor

Approx. 43.5 sq. metres (467.9 sq. feet)



First Floor

Approx. 43.5 sq. metres (467.9 sq. feet)



Total area: approx. 86.9 sq. metres (935.7 sq. feet)

FOR ILLUSTRATIVE PURPOSES ONLY. NOT TO SCALE. Whilst every attempt had been made to ensure the accuracy of the floor plan shown, all measurements, positioning, fixtures, features, fittings and any other data shown are an approximate interpretation for illustrative purposes only and are not to scale. No responsibility is taken for any error, omission, miss-statement or use of data shown.

[Property marketing provided by www.fotomarketing.co.uk](http://www.fotomarketing.co.uk)







