



**WESTWOODLEBER**  
LET US GUIDE YOU HOME

Rawdon Drive, Hoddesdon, EN11 8DH  
£239,995





## Rawdon Drive, Hoddesdon, EN11 8DH

**\*\* OFFERED CHAIN FREE \*\*** Westwood Leber are delighted to bring to the market this deceptively spacious two bedroom apartment perfectly positioned in Hoddesdon town centre which offers a number of convenient amenities to include high street shops, restaurants and public houses. This apartment is immaculately presented throughout and benefits from AN UNDERCOVER ALLOCATED PARKING SPACE and a LONG LEASE OVER 130 YEARS.

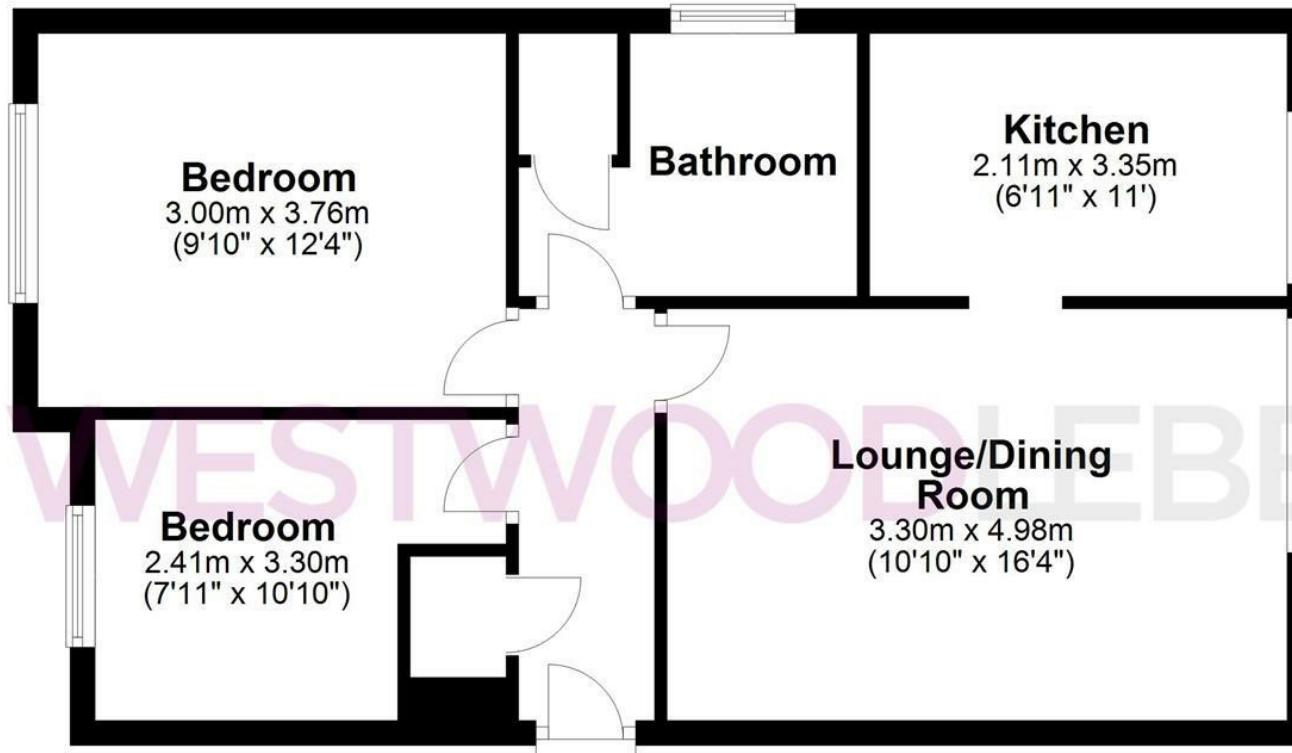


**W WESTWOODLEBER**

**W WESTWOODLEBER**  
LET US GUIDE YOU HOME

## Apartment

Approx. 54.1 sq. metres (582.4 sq. feet)



Total area: approx. 54.1 sq. metres (582.4 sq. feet)

FOR ILLUSTRATIVE PURPOSES ONLY. NOT TO SCALE. Whilst every attempt had been made to ensure the accuracy of the floor plan shown, all measurements, positioning, fixtures, features, fittings and any other data shown are an approximate interpretation for illustrative purposes only and are not to scale. No responsibility is taken for any error, omission, miss-statement or use of data shown.

Property marketing provided by [www.fotomarketing.co.uk](http://www.fotomarketing.co.uk)





WESTWOODLEBER



WESTWOODLEBER



WESTWOODLEBER



WESTWOODLEBER

