



WESTWOODLEBER
LET US GUIDE YOU HOME

Winterscroft Road, Hoddesdon, EN11 8RJ
£235,000



Winterscroft Road, Hoddesdon, EN11 8RJ

Westwood Leber are delighted to bring to the market this immaculately presented one double bedroom first floor maisonette that comes with the rare benefit of a private rear garden. This property has been tastefully updated by the current owners and provides spacious accommodation throughout.

Externally this property provides fantastic garden space which is mainly laid to lawn with a terrace for seating and a shed. Additionally there is a large brick built storage cupboard. This excellent property is situated just a short walk from Hoddesdon Town Centre and also benefits with low service charge and ground rent. Offered chain free, we would highly recommend an internal viewing.



 WESTWOODLEBER

 WESTWOODLEBER
LET US GUIDE YOU HOME

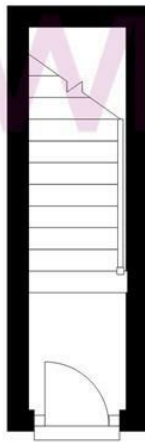
First Floor

Approx. 51.5 sq. metres (554.0 sq. feet)



Ground Floor

Approx. 3.3 sq. metres (35.2 sq. feet)



Total area: approx. 54.7 sq. metres (589.2 sq. feet)

FOR ILLUSTRATIVE PURPOSES ONLY. NOT TO SCALE. Whilst every attempt had been made to ensure the accuracy of the floor plan shown, all measurements, positioning, fixtures, features, fittings and any other data shown are an approximate interpretation for illustrative purposes only and are not to scale. No responsibility is taken for any error, omission, misstatement or use of data shown.

[Property marketing provided by www.fotomarketing.co.uk](http://www.fotomarketing.co.uk)

