



WV WESTWOODLEBER

WV WESTWOODLEBER
LET US GUIDE YOU HOME

High Wood Road, Hoddesdon, EN11 9AU
Guide price £700,000



High Wood Road, Hoddesdon, EN11 9AU

Westwood Leber is delighted to present this immaculate four-bedroom link-detached family home located on the highly sought-after residential road within the Roselands Development. This stunning property boasts exceptionally spacious living accommodations throughout, designed to meet the needs of a modern family.

Upon entering, you will be greeted by a larger-than-average sitting room, perfect for family gatherings and relaxation. The separate fitted kitchen, complete with modern appliances, adjoins a cozy dining room, making it ideal for both everyday meals and entertaining guests. The property also includes a dedicated study, providing a quiet space for work or study, which connects to a downstairs bedroom featuring a luxurious three-piece en-suite bathroom.

The exterior of the home is equally impressive. A well-landscaped rear garden offers a tranquil retreat for outdoor activities and relaxation, while off-street parking for several cars ensures convenience for residents and visitors alike.

An internal viewing of this exquisite home is highly recommended to fully appreciate its charm and spacious layout. Don't miss the opportunity to make this exceptional property your new family home!

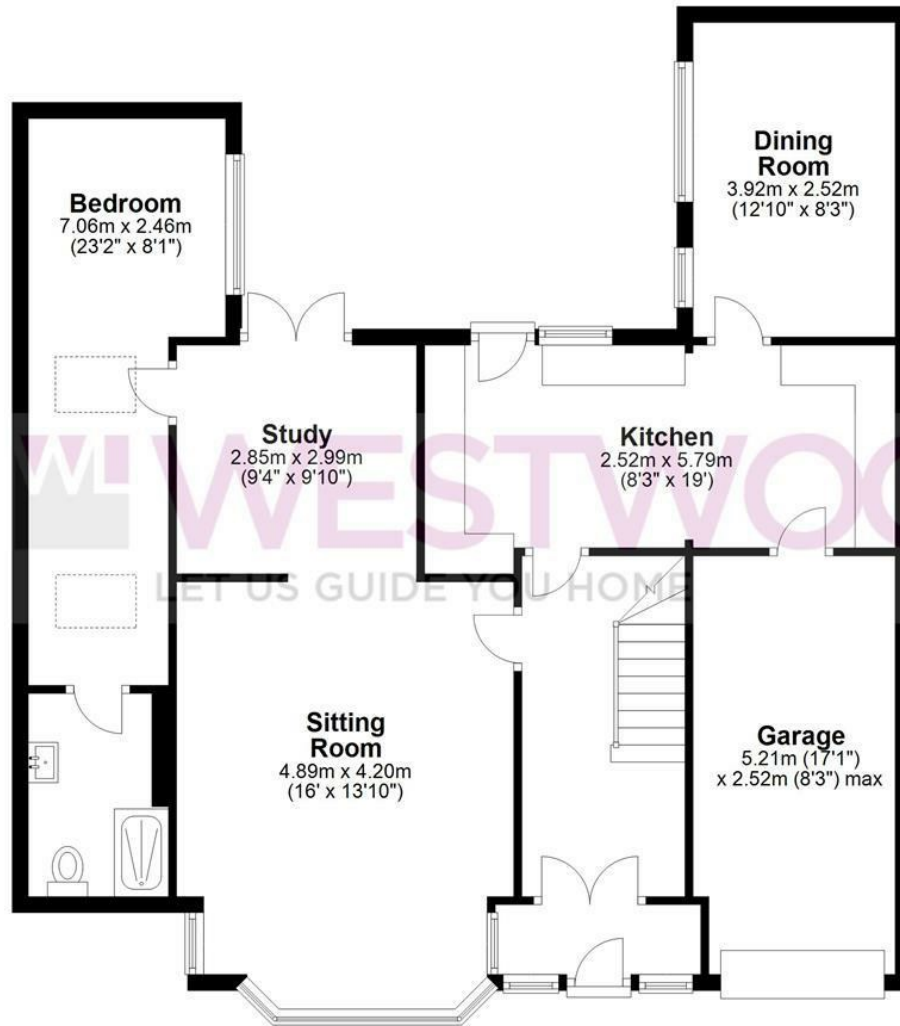


W WESTWOODLEBER

W WESTWOODLEBER
LET US GUIDE YOU HOME

Ground Floor

Approx. 100.1 sq. metres (1077.7 sq. feet)



First Floor

Approx. 43.5 sq. metres (468.5 sq. feet)



Total area: approx. 143.7 sq. metres (1546.3 sq. feet)

FOR ILLUSTRATIVE PURPOSES ONLY. NOT TO SCALE. Whilst every attempt had been made to ensure the accuracy of the floor plan shown, all measurements, positioning, fixtures, features, fittings and any other data shown are an approximate interpretation for illustrative purposes only and are not to scale. No responsibility is taken for any error, omission, miss-statement or use of data shown. Property marketing provided by Westwood Leber.
Plan produced using PlanUp.









WESTWOODLEBER



WESTWOODLEBER



WESTWOODLEBER



WESTWOODLEBER



WESTWOODLEBER



WESTWOODLEBER



WESTWOODLEBER



WESTWOODLEBER



WESTWOODLEBER



WESTWOODLEBER



WESTWOODLEBER

