



WESTWOODLEBER

WESTWOODLEBER
LET US GUIDE YOU HOME

The Ridgeway, Northaw, Potters Bar, EN6 4BD
£1,750,000



The Ridgeway, Northaw, Potters Bar, EN6 4BD

Westwood Leber are thrilled to present this exceptional four/five bedroom detached family home, located on the prestigious 'The Ridgeway' in Cuffley. This stunning property boasts substantial well extended living accommodation, offering an abundance of space and luxurious features for modern living. The heart of this home is the breath-taking modern kitchen/diner, equipped with high-end appliances and stylish finishes. The bi-folding doors open out to the south-facing garden, creating a seamless transition between indoor and outdoor spaces, perfect for entertaining and family gatherings.

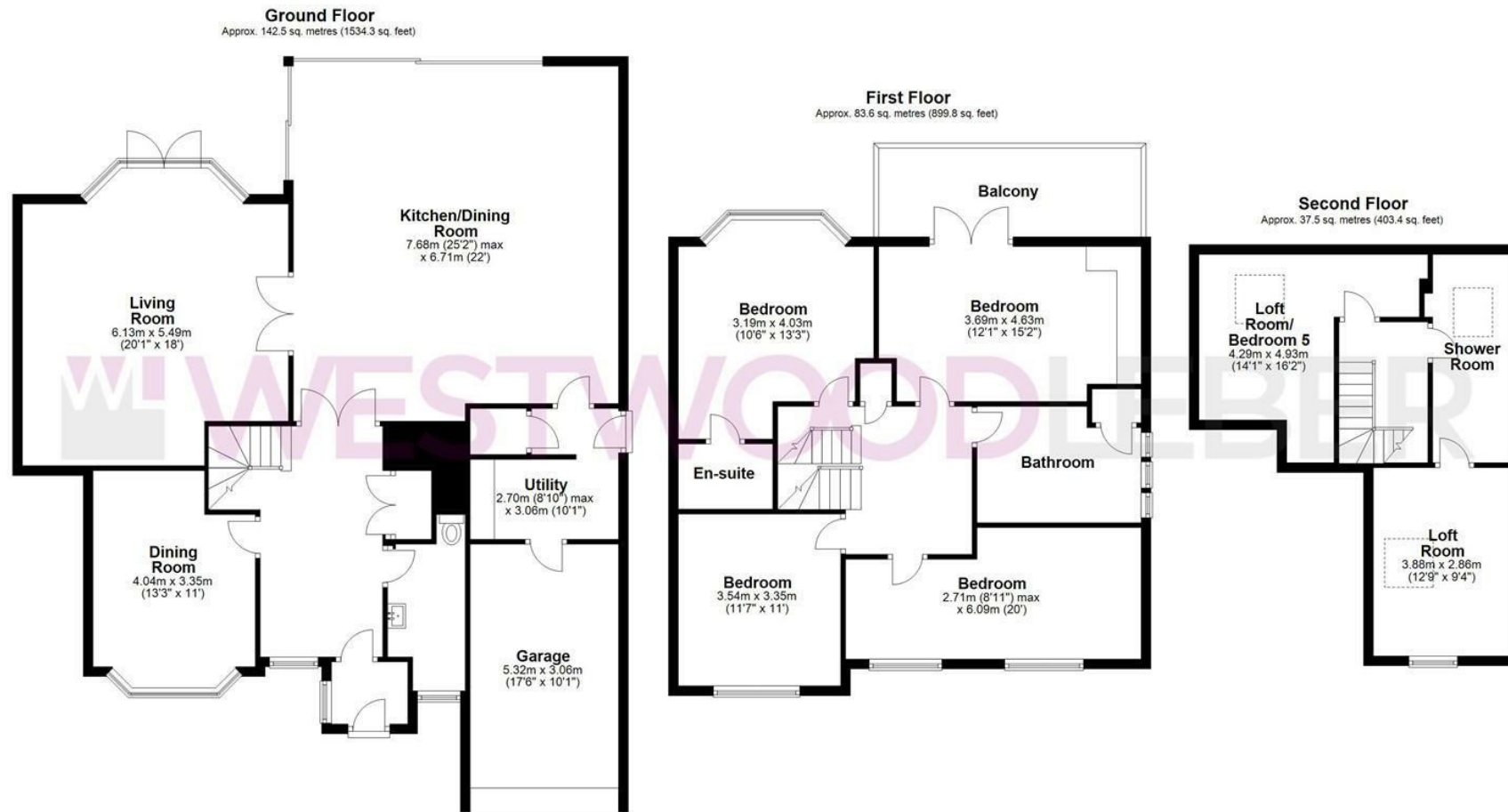
With planning permission already granted for a loft dormer extension, there is potential to further expand and customize this home to suit your needs. The property currently includes four/five well-proportioned bedrooms, providing flexible living arrangements for growing families or guests. The spacious and bright living areas are complemented by stunning views of the London skyline from the rear of the property, adding a unique and picturesque element to this already impressive home. The large windows throughout ensure that each room is filled with natural light, enhancing the sense of space and comfort.

Situated on a sought-after road, the property features a garage and a driveway that can accommodate multiple cars, offering convenience and security. This remarkable home combines luxury, space, and an enviable location, making it an ideal choice for those seeking an exceptional property in Cuffley. Don't miss the opportunity to make this stunning house your new family home



WESTWOODLEBER

WESTWOODLEBER
LET US GUIDE YOU HOME



Total area: approx. 263.6 sq. metres (2837.5 sq. feet)

FOR ILLUSTRATIVE PURPOSES ONLY. NOT TO SCALE. Whilst every attempt had been made to ensure the accuracy of the floor plan shown, all measurements, positioning, fixtures, features, fittings and any other data shown are an approximate interpretation for illustrative purposes only and are not to scale. No responsibility is taken for any error, omission, mis-statement or use of data shown.

Property marketing provided by www.fotomarketing.co.uk







WESTWOODLEBER



WESTWOODLEBER



WESTWOODLEBER



WESTWOODLEBER





WESTWOODLEBER



WESTWOODLEBER



WESTWOODLEBER



WESTWOODLEBER











