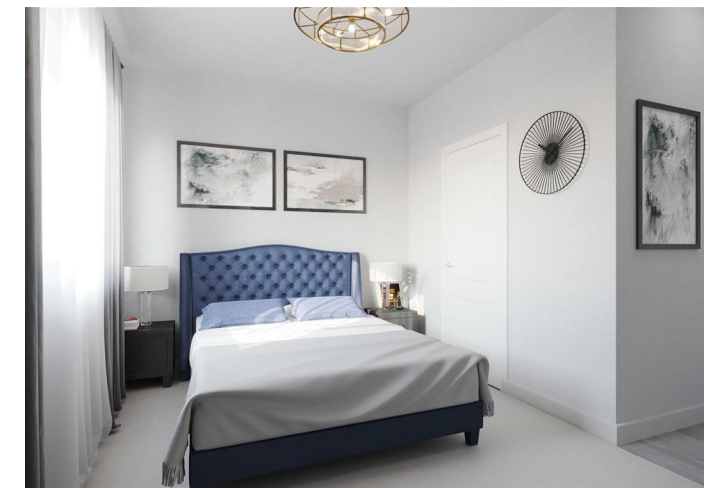




WESTWOODLEBER
LET US GUIDE YOU HOME

Walnut Tree Close, Hoe Lane, Nazeing, EN9 2RJ
Prices from £895,000



Walnut Tree Close, Hoe Lane, Nazeing, EN9 2RJ

This fantastic development of just 6 large detached family homes (circa 2560 sq ft) sits in a lovely, quiet, semi-rural location with some plots overlooking fields to the rear. These deceptively spacious properties are arranged over 3 floors with the top floor forming the incredible principle bedroom suite that boasts a large bedroom with a Velux Balcony with wonderful views, along with a large en-suite.

Internally the properties come with an excellent specification and the accommodation comprises of:

Ground floor- Hallway, cloakroom, living room with log burner and a large Kitchen/Dining/Family room.

First floor- Bedroom with en-suite, 2 further bedrooms, study/box room and family bathroom.

Second floor-Principle bedroom with en-suite.

Outside- the properties come with a large driveway and EV charging point, and all benefit from a large rear garden.

These stunning properties will be situated on a gated development and really must be seen to be fully appreciated.



