



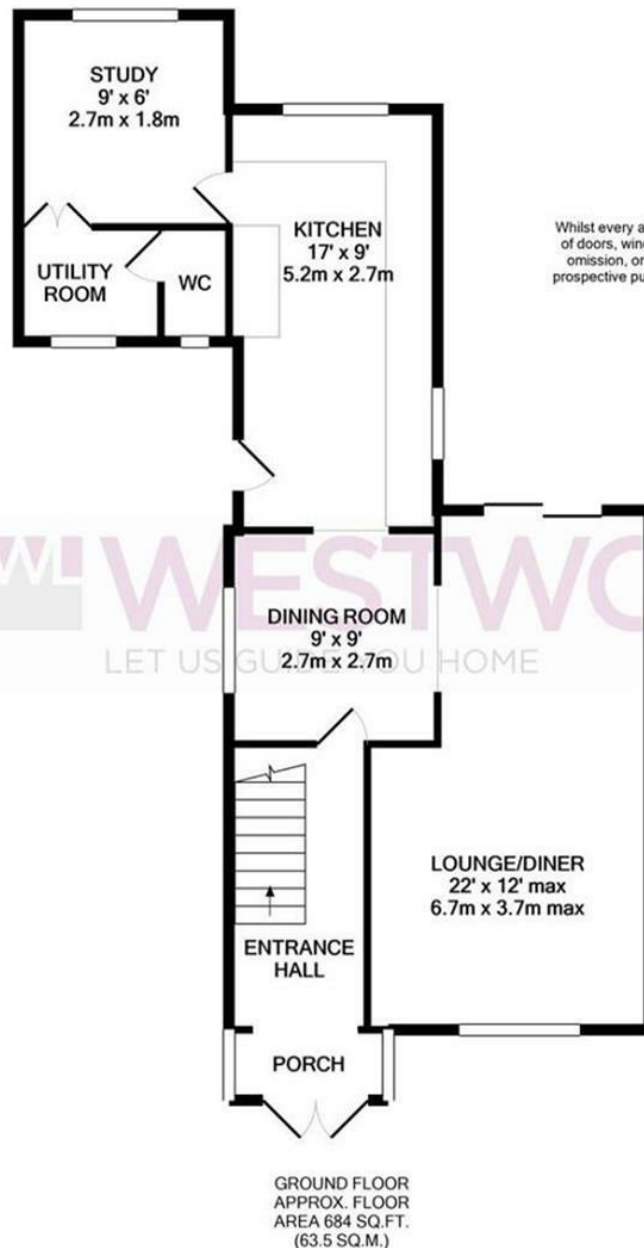


Hyde Mead, Nazeing, Waltham Abbey, EN9 2HS

Westwood Leber are delighted to bring to the market this CHAIN FREE well extended three bedroom semi-detached family home in this highly sought-after location in Nazeing. This excellent house offers deceptively spacious accommodation throughout which includes a ground floor w/c, utility room, a well sized living room, large kitchen/breakfast room and a snug/study. This property is positioned perfectly in Nazeing and also benefits from a private rear garden and large front driveway. An early viewing is highly recommended.

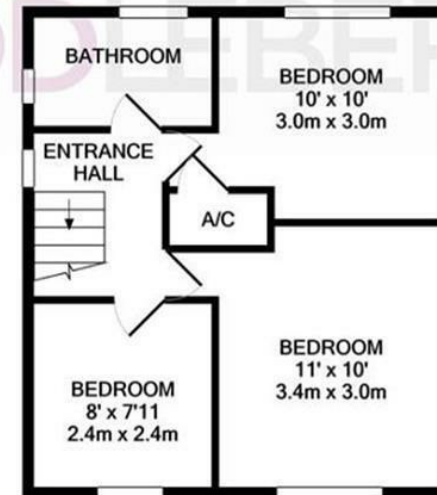


W WESTWOODLEBER



TOTAL APPROX. FLOOR AREA 1048 SQ.FT. (97.3 SQ.M.)

Whilst every attempt has been made to ensure the accuracy of the floor plan contained here, measurements of doors, windows, rooms and any other items are approximate and no responsibility is taken for any error, omission, or mis-statement. This plan is for illustrative purposes only and should be used as such by any prospective purchaser. The services, systems and appliances shown have not been tested and no guarantee as to their operability or efficiency can be given
Made with Metropix ©2020



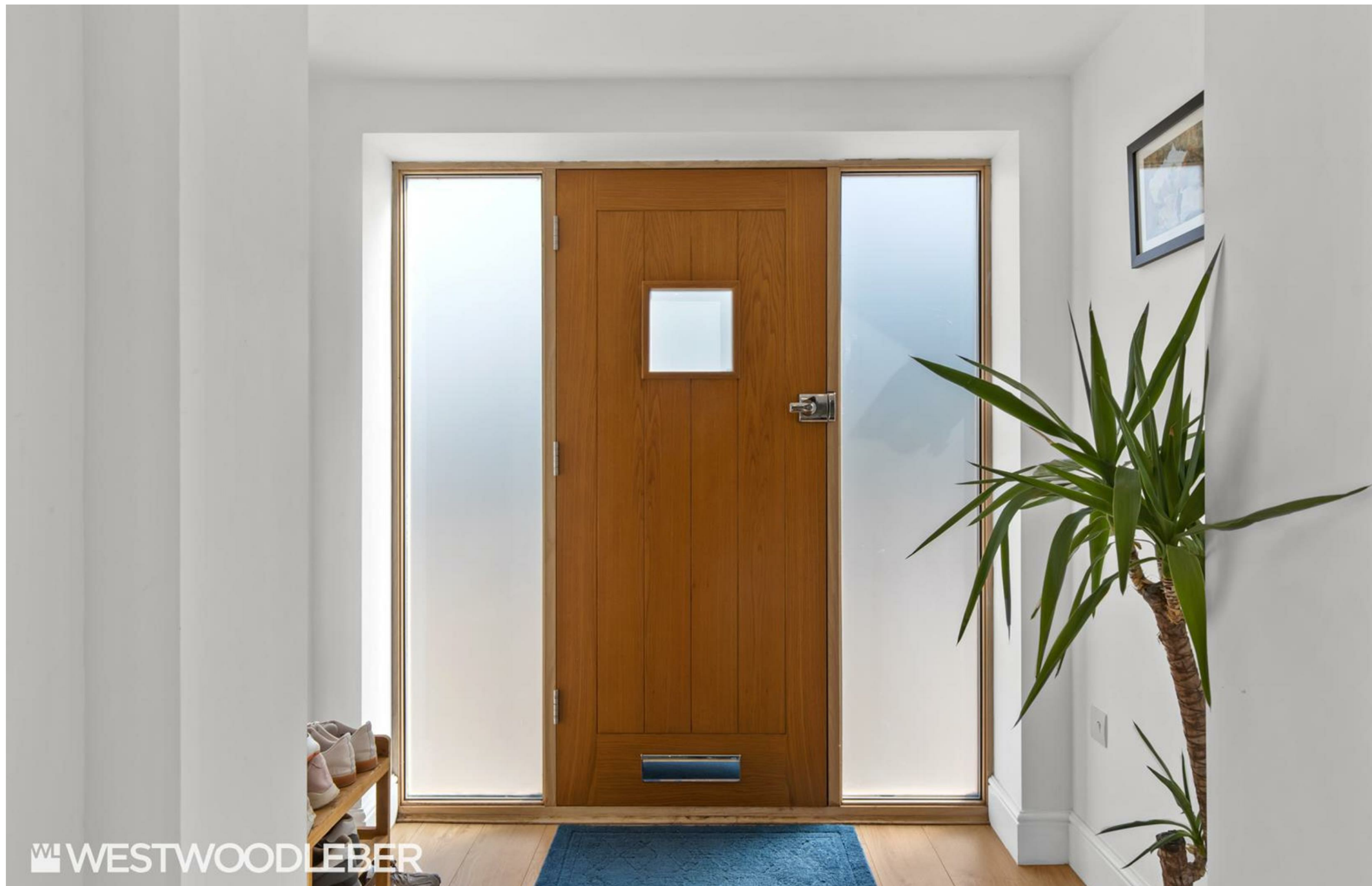
1ST FLOOR
APPROX. FLOOR
AREA 364 SQ.FT.
(33.8 SQ.M.)











W^L WESTWOODLEBER

W^L WESTWOODLEBER
LET US GUIDE YOU HOME