



WESTWOODLEBER

WESTWOODLEBER
LET US GUIDE YOU HOME

Caldecot Way, Broxbourne, EN10 6PH
£539,995



Caldecot Way, Broxbourne, EN10 6PH

Westwood Leber are delighted to bring to the market this beautifully presented, three bedroom end of terrace family home Located on this highly sought-after location in Broxbourne. The property offers excellent living accommodation throughout including a 24'8 x 12'9ft lounge/diner with bi-folding doors leading to the refitted kitchen, a large entrance hall and a downstairs w/c.

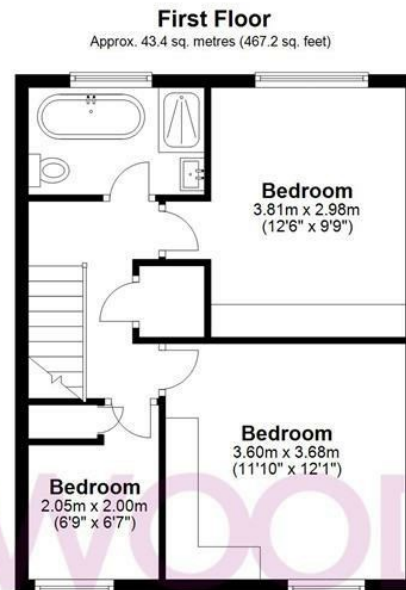
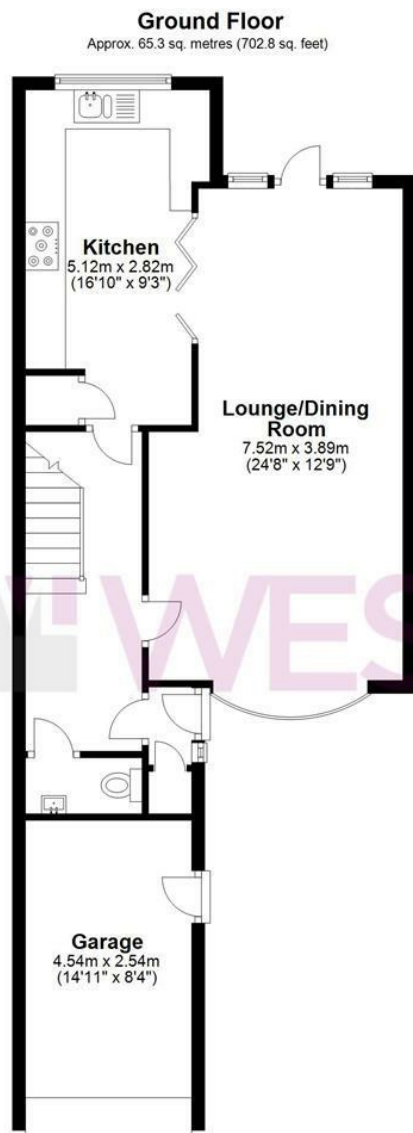
The upstairs includes three generous sized bedrooms, a refitted four-piece bathroom suite and a loft space with ample storage. To the rear of the property there an immaculately landscaped rear garden with a large outer-building with flexible usage and bi-folding doors opening out onto the garden. To the front there is a large driveway for several cars and a garage with scope to convert STPP.

An early viewing is highly recommended!



WESTWOODLEBER

WESTWOODLEBER
LET US GUIDE YOU HOME



Total area: approx. 125.0 sq. metres (1345.2 sq. feet)

FOR ILLUSTRATIVE PURPOSES ONLY. NOT TO SCALE. Whilst every attempt had been made to ensure the accuracy of the floor plan shown, all measurements, positioning, fixtures, features, fittings and any other data shown are an approximate interpretation for illustrative purposes only and are not to scale. No responsibility is taken for any error, omission, miss-statement or use of data shown.

Property marketing provided by www.fotomarketing.co.uk



WESTWOODLEBER



WESTWOODLEBER



WESTWOODLEBER



WESTWOODLEBER









W WESTWOODLEBER

W WESTWOODLEBER
LET US GUIDE YOU HOME