



WESTWOODLEBER
LET US GUIDE YOU HOME

Horrocks Close, Ware, SG12 0QL
£650,000



Horrocks Close, Ware, SG12 0QL

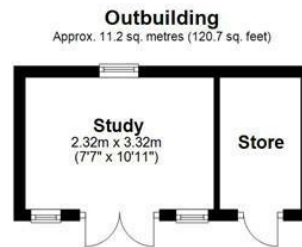
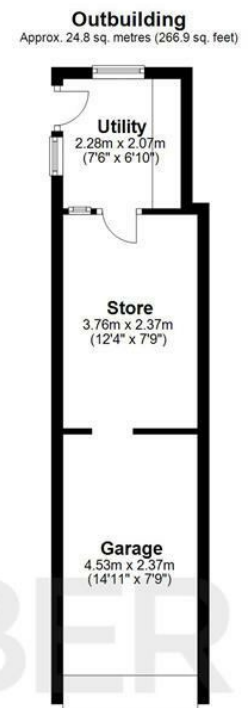
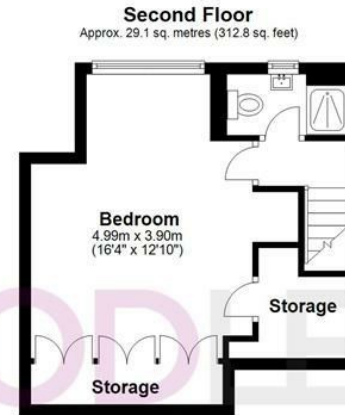
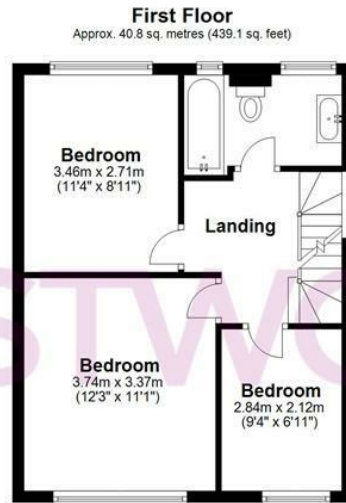
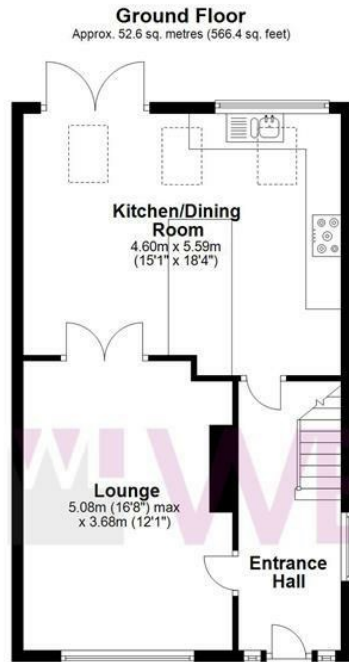
Westwood Leber are delighted to bring to the market this fabulous four bedroom semi-detached family home position perfectly within a quiet cul-de-sac on one of Ware's most sought after developments. This property has been well extended and improved over the year but still offers substantial scope to develop further stpp.

The current accommodation comprises a luxurious kitchen/dining room which leads out to the garden, separate living room, 3 first floor bedrooms, large family bathroom and a magnificent top floor master bedroom suite with a newly refurbished en-suite shower room, excellent wardrobe space and fantastic views of the surrounding rolling countryside. Externally the property has a well presented rear garden, well sized block paved driveway, summer house and storage perfect for a games room for working from home and a rarely available tandem garage currently split up to utilise all space including a utility room easily accessible to the rear. We would highly recommend an internal viewing.



WESTWOODLEBER

WESTWOODLEBER
LET US GUIDE YOU HOME



Total area: approx. 158.5 sq. metres (1705.9 sq. feet)

FOR ILLUSTRATIVE PURPOSES ONLY. NOT TO SCALE. Whilst every attempt had been made to ensure the accuracy of the floor plan shown, all measurements, positioning, fixtures, features, fittings and any other data shown are an approximate interpretation for illustrative purposes only and are not to scale. No responsibility is taken for any error, omission, miss-statement or use of data shown.

Property marketing provided by www.fotomarketing.co.uk



WESTWOODLEBER



WESTWOODLEBER



WESTWOODLEBER



WESTWOODLEBER











WESTWOODLEBER



WESTWOODLEBER



WESTWOODLEBER



WESTWOODLEBER



 WESTWOODLEBER

 WESTWOODLEBER
LET US GUIDE YOU HOME