



WV WESTWOODLEBER

WV WESTWOODLEBER
LET US GUIDE YOU HOME

Norris Rise, Hoddesdon, EN11 8RE
£439,995



Norris Rise, Hoddesdon, EN11 8RE

**** OFFERED CHAIN FREE **** Westwood Leber are delighted to bring to the market this deceptively spacious three bedroom family home! This excellent family home has been tastefully updated internally and still offers further scope to extend and improve stpp.

The accommodation comprises: three good sized bedrooms, first floor bathroom, ground floor w/c, large kitchen/dining room, separate living room, conservatory and a utility room. Externally the property benefits rom a good rear garden and large front driveway.

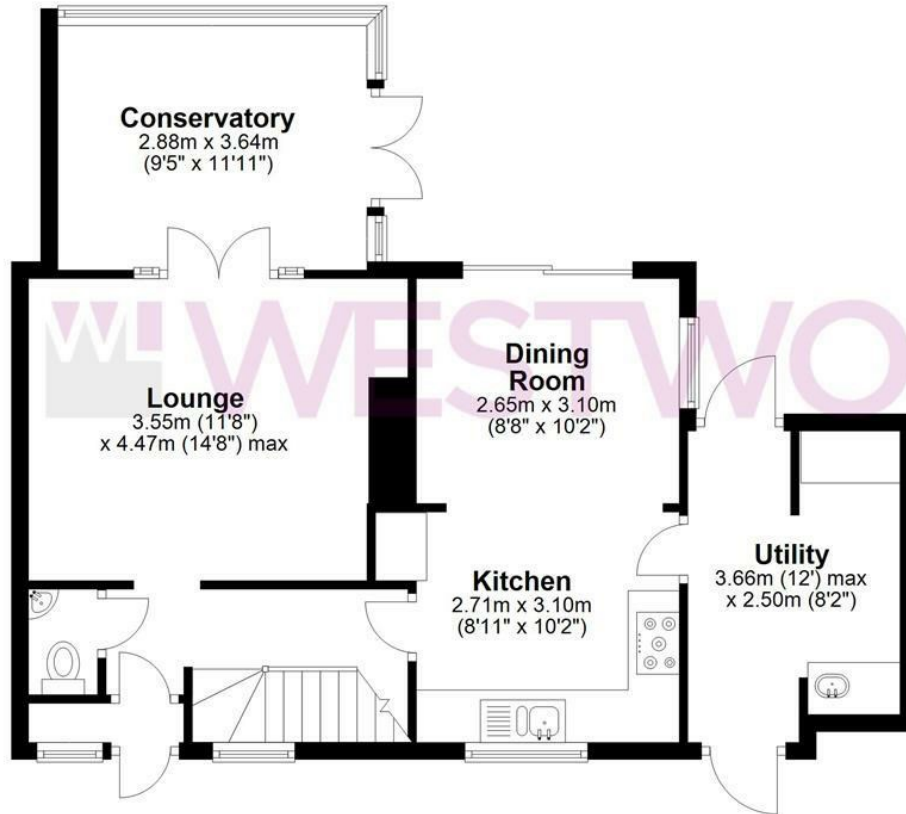


WESTWOODLEBER

WESTWOODLEBER
LET US GUIDE YOU HOME

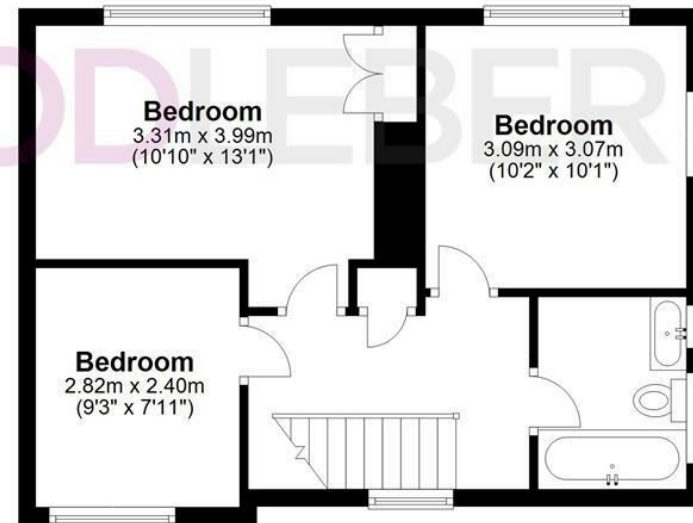
Ground Floor

Approx. 61.8 sq. metres (664.9 sq. feet)



First Floor

Approx. 42.3 sq. metres (455.4 sq. feet)



Total area: approx. 104.1 sq. metres (1120.3 sq. feet)

FOR ILLUSTRATIVE PURPOSES ONLY. NOT TO SCALE. Whilst every attempt had been made to ensure the accuracy of the floor plan shown, all measurements, positioning, fixtures, features, fittings and any other data shown are an approximate interpretation for illustrative purposes only and are not to scale. No responsibility is taken for any error, omission, miss-statement or use of data shown.

Property marketing provided by www.fotomarketing.co.uk





WESTWOODLEBER



WESTWOODLEBER



WESTWOODLEBER



WESTWOODLEBER





