



WV WESTWOODLEBER

WV WESTWOODLEBER
LET US GUIDE YOU HOME

Moye Close, Hoddesdon, EN11 8FT
£300,000



Moye Close, Hoddesdon, EN11 8FT

Westwood Leber are delighted to bring to the market this charming apartment offering a perfect blend of comfort and convenience. This modern property is located on one of the areas most sought after new build developments situated in a prime location, residents will enjoy easy access to local amenities, shops and excellent public transport links.

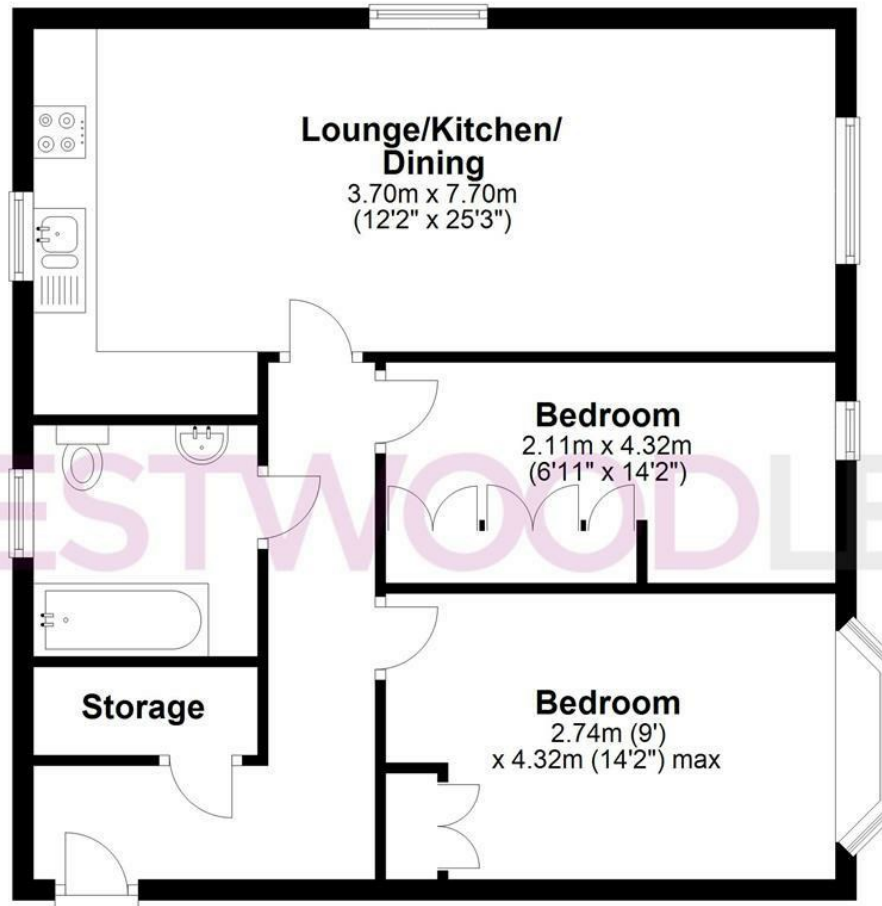
Built less than two years ago, this deceptively spacious apartment has been immaculately kept by the current owners with accommodation comprising: two well sized bedrooms, luxury bathroom, large entrance hallway with good storage including loft space and a fabulous open plan kitchen/living room. The property also benefits from security entry phone system, ALLOCATED PARKING FOR 2 CARS and plenty of spaces for visitors parking. With this property only being 2 years old a new owner will benefit from the low running costs and a still in date NHBC certificate.



WESTWOODLEBER

Apartment

Approx. 63.1 sq. metres (679.2 sq. feet)



Total area: approx. 63.1 sq. metres (679.2 sq. feet)

FOR ILLUSTRATIVE PURPOSES ONLY. NOT TO SCALE. Whilst every attempt had been made to ensure the accuracy of the floor plan shown, all measurements, positioning, fixtures, features, fittings and any other data shown are an approximate interpretation for illustrative purposes only and are not to scale. No responsibility is taken for any error, omission, miss-statement or use of data shown.

Property marketing provided by www.fotomarketing.co.uk





WESTWOODLEBER



WESTWOODLEBER



WESTWOODLEBER



WESTWOODLEBER



