



WV WESTWOODLEBER

WV WESTWOODLEBER
LET US GUIDE YOU HOME

Hailey Gardens, Hailey, SG13 7BT
£725,000



Hailey Gardens, Hailey, SG13 7BT

Westwood Leber are delighted to bring to the market this stunning four bedroom modern house situated in the heart of Hailey, set within this exclusive gated development, within walking distance to local schools, Hoddesdon Town Centre and Rye House train station serving London Liverpool Street. This spectacular accommodation is arranged over three floors that extends to some 1720 square feet and must be seen. This truly remarkable home is presented in fantastic condition throughout and was built with a superb specification including appliances. This spectacular home is beautifully presented and deceptively spacious and an internal viewing is highly recommended.

The ground floor benefits from under-floor heating throughout and is served by a separate utility room, cloakroom and bi-fold doors leading to the garden.

To the first floor landing, which consists of a family bathroom, three double bedrooms with one including an en-suite.

To the top floor, shows a large master bedroom with en-suite, with great eaves space!

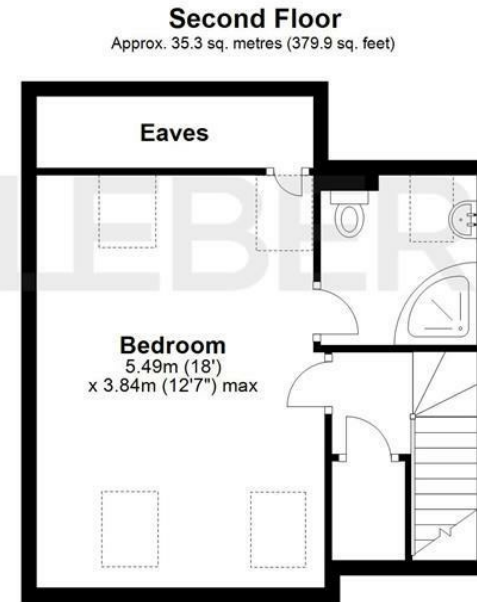
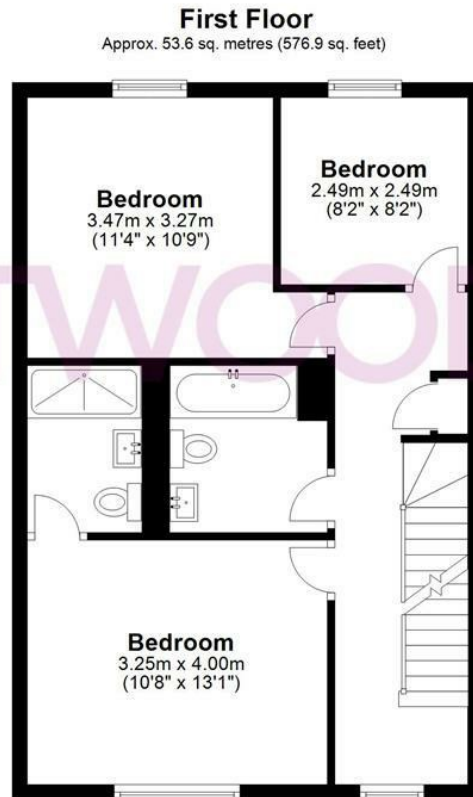
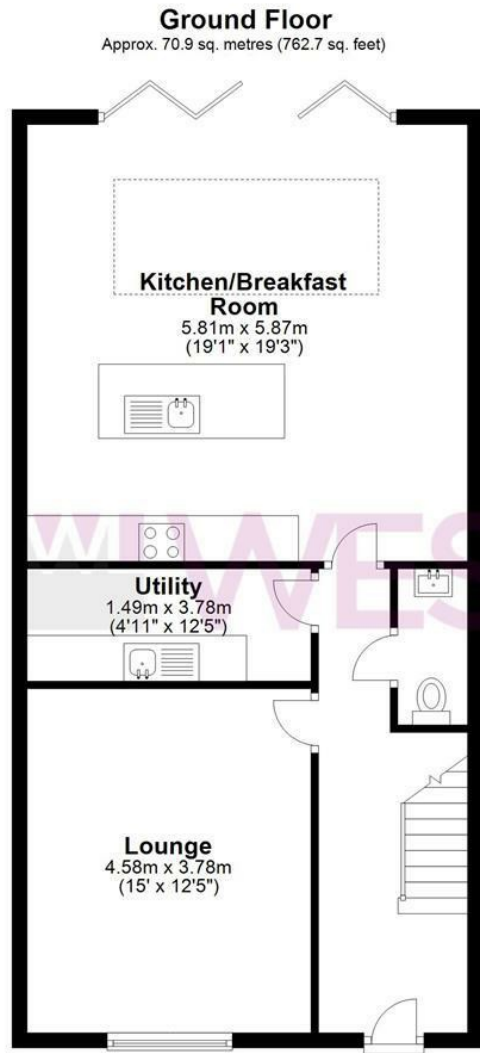
The exterior of the property consists of a good size, sunny rear garden with initial patio entertainment area and artificial grass lawn thereafter. Returning to the front, is a Tegua block paved driveway providing parking and access to the property.

The house is a short walk to a parade of shops as well as Hoddesdon Town Centre and train line with links to London's Liverpool Street. Catchment to the Ofsted Outstanding Sheredes primary school and Robert Barclay secondary feeder school.



 WESTWOODLEBER

 WESTWOODLEBER
LET US GUIDE YOU HOME



Total area: approx. 159.7 sq. metres (1719.5 sq. feet)

FOR ILLUSTRATIVE PURPOSES ONLY. NOT TO SCALE. Whilst every attempt had been made to ensure the accuracy of the floor plan shown, all measurements, positioning, fixtures, features, fittings and any other data shown are an approximate interpretation for illustrative purposes only and are not to scale. No responsibility is taken for any error, omission, miss-statement or use of data shown.

Property marketing provided by www.fotomarketing.co.uk



WESTWOODLEBER



WESTWOODLEBER



WESTWOODLEBER



WESTWOODLEBER





WESTWOODLEBER



WESTWOODLEBER



WESTWOODLEBER



WESTWOODLEBER





WESTWOODLEBER