



WESTWOODLEBER

**WESTWOODLEBER**  
LET US GUIDE YOU HOME

Buttondene Crescent, Broxbourne, EN10 6RH

£995,000





## Buttondene Crescent, Broxbourne, EN10 6RH

Westwood Leber are delighted to bring to the market this truly fantastic five bedroom detached home set on arguably the best plot in the local area measured at approximately a 1/3 of an acre. The property provides deceptively spacious and extremely versatile living accommodation throughout comprising a fabulous living room, utility room, ground floor w/c, large kitchen / dining room leading perfectly to a snug/playroom and a sun room with bi-folding doors leading on to the amazing rear garden. The first floor comprises: five well sized bedrooms, one family bathroom and further en-suite to master.

Externally, this impressive plot benefits from a large front driveway and a magnificent garden reaching approximately 104m in length with the plot massively opening up to the rear. This beautiful family home is situated within a popular cul-de-sac location close to The River Lea and Broxbourne Rail Station.





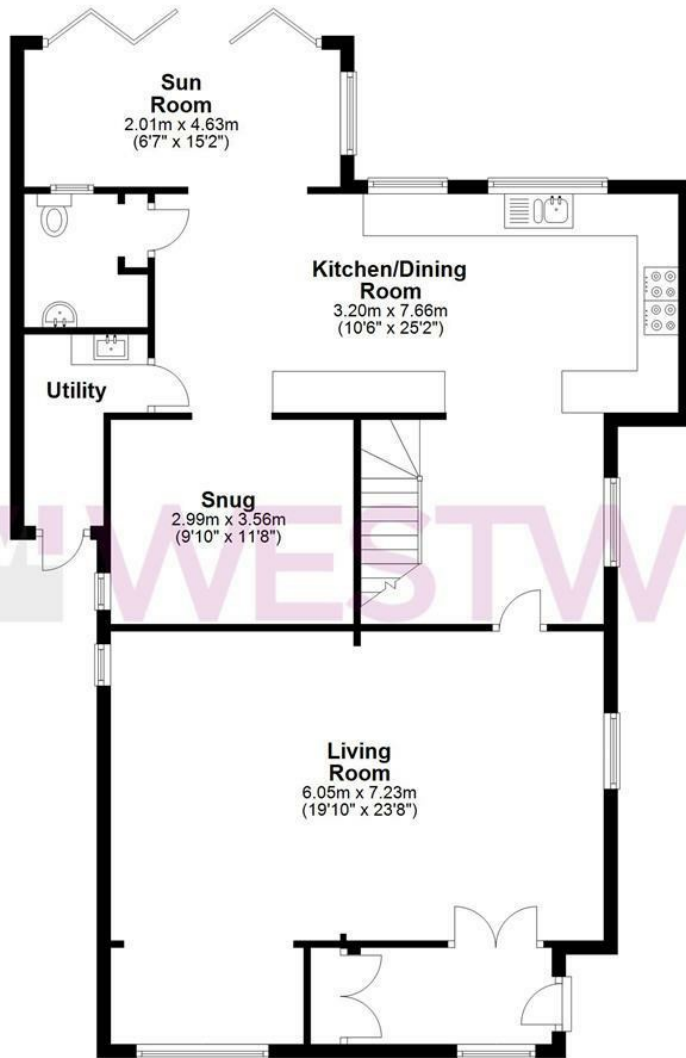
 WESTWOODLEBER

 WESTWOODLEBER  
LET US GUIDE YOU HOME



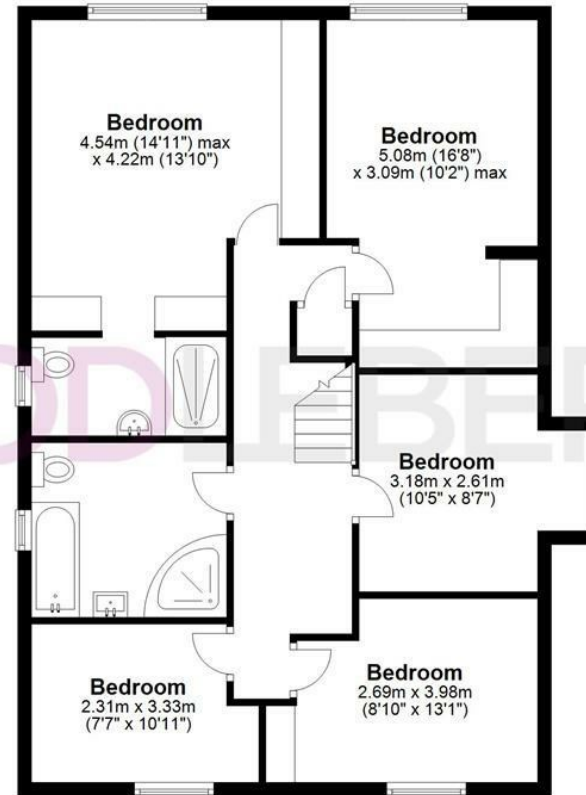
### Ground Floor

Approx. 108.0 sq. metres (1162.1 sq. feet)



### First Floor

Approx. 83.6 sq. metres (900.3 sq. feet)



Total area: approx. 191.6 sq. metres (2062.4 sq. feet)

FOR ILLUSTRATIVE PURPOSES ONLY. NOT TO SCALE. Whilst every attempt had been made to ensure the accuracy of the floor plan shown, all measurements, positioning, fixtures, features, fittings and any other data shown are an approximate interpretation for illustrative purposes only and are not to scale. No responsibility is taken for any error, omission, miss-statement or use of data shown.

Property marketing provided by [www.fotomarketing.co.uk](http://www.fotomarketing.co.uk)





WESTWOODLEBER



WESTWOODLEBER



WESTWOODLEBER



WESTWOODLEBER









WESTWOODLEBER



WESTWOODLEBER



WESTWOODLEBER



WESTWOODLEBER





WESTWOODLEBER



WESTWOODLEBER



WESTWOODLEBER



WESTWOODLEBER





**WESTWOODLEBER**

**WESTWOODLEBER**  
LET US GUIDE YOU HOME