



WESTWOODLEBER

WESTWOODLEBER
LET US GUIDE YOU HOME

Kennedy Avenue, Hoddesdon, EN11 8NW
Offers in excess of £500,000



Kennedy Avenue, Hoddesdon, EN11 8NW

Westwood Leber are delighted to bring to the market this exceptional four bedroom detached family home that has been tastefully updated by the current owners. The property offers extremely spacious living accommodation comprising: Large living/dining room, a ground floor w/c, luxury kitchen/breakfast room, excellent first floor bathroom and four well sized bedrooms. Externally, this fantastic house has had the garden beautifully landscaped providing excellent low maintenance space perfect for entertaining and further benefits from a large front driveway and a detached garage! An early viewing is highly recommended!

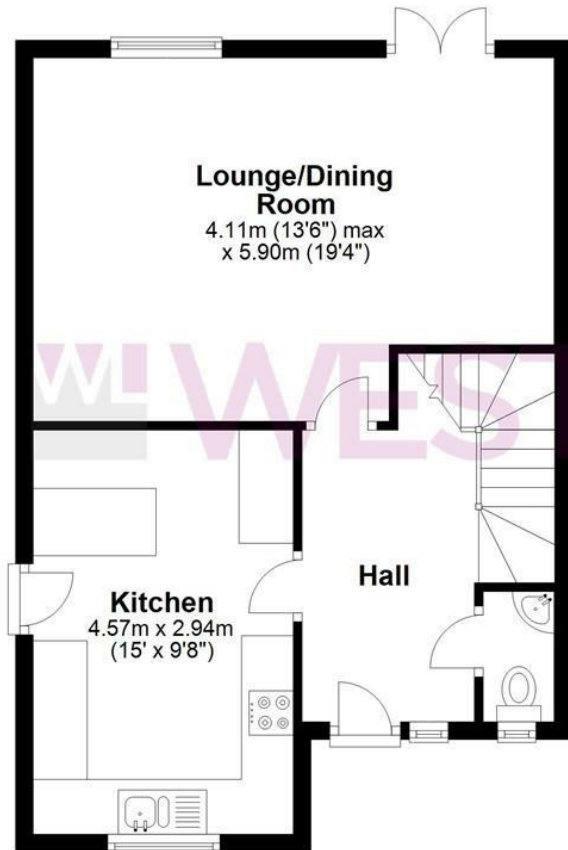


WESTWOODLEBER

WESTWOODLEBER
LET US GUIDE YOU HOME

Ground Floor

Approx. 48.0 sq. metres (516.6 sq. feet)



Lounge/Dining Room

4.11m (13'6") max
x 5.90m (19'4")

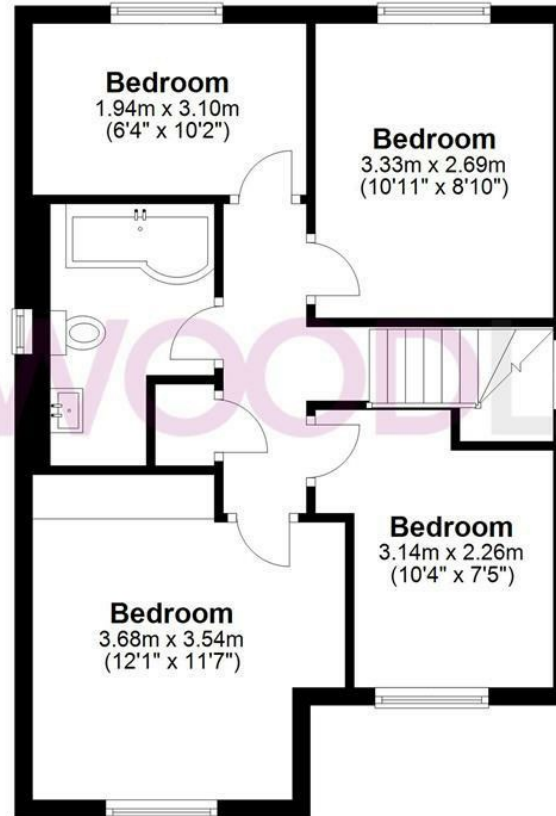
Kitchen

4.57m x 2.94m
(15' x 9'8")

Hall

First Floor

Approx. 48.0 sq. metres (516.6 sq. feet)



Bedroom

1.94m x 3.10m
(6'4" x 10'2")

Bedroom

3.33m x 2.69m
(10'11" x 8'10")

Bedroom

3.14m x 2.26m
(10'4" x 7'5")

Bedroom

3.68m x 3.54m
(12'1" x 11'7")

Garage

Approx. 13.1 sq. metres (140.6 sq. feet)



Garage

5.13m x 2.55m
(16'10" x 8'4")

Total area: approx. 109.0 sq. metres (1173.8 sq. feet)

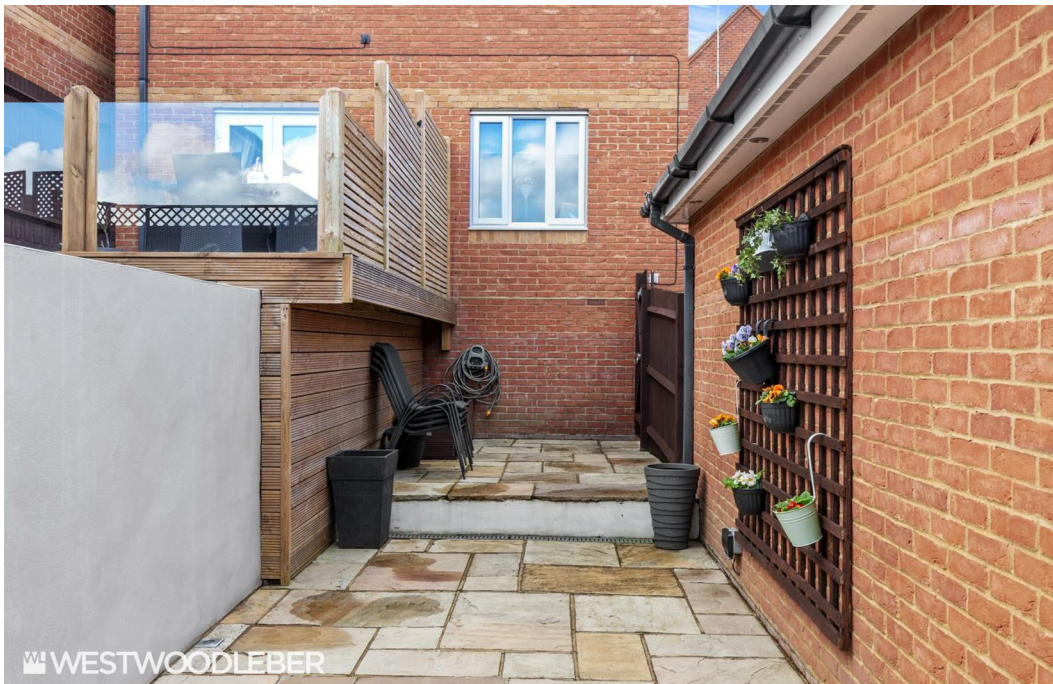
FOR ILLUSTRATIVE PURPOSES ONLY. NOT TO SCALE. Whilst every attempt had been made to ensure the accuracy of the floor plan shown, all measurements, positioning, fixtures, features, fittings and any other data shown are an approximate interpretation for illustrative purposes only and are not to scale. No responsibility is taken for any error, omission, miss-statement or use of data shown.

Property marketing provided by www.fotomarketing.co.uk











W WESTWOODLEBER

W WESTWOODLEBER
LET US GUIDE YOU HOME