



**WESTWOODLEBER**  
LET US GUIDE YOU HOME

Forres Close, Hoddesdon, EN11 9HZ  
£635,000



## Forres Close, Hoddesdon, EN11 9HZ

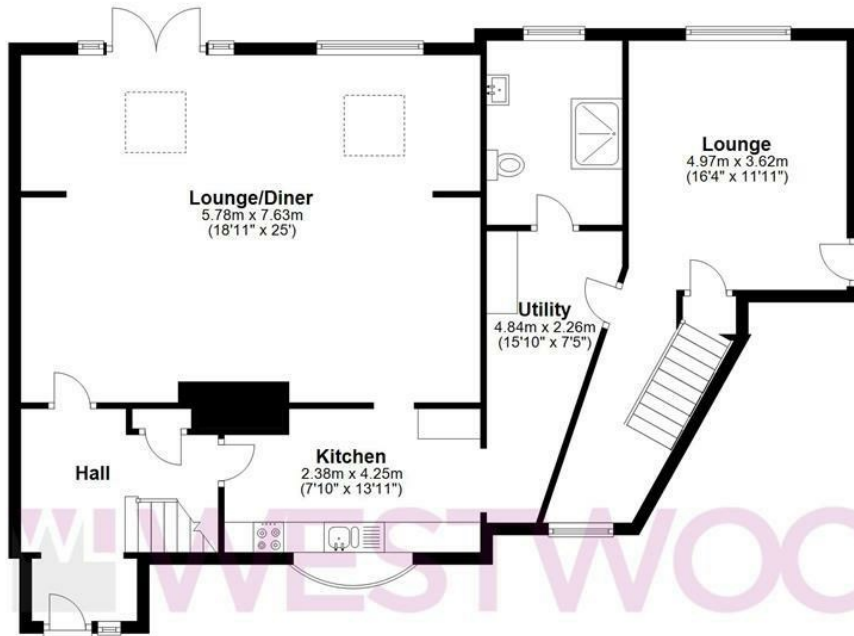
Westwood Leber are delighted to bring to the market this exceptional four bedroom semi-detached family home positioned perfectly on this quiet cul-de-sac. This property has been tastefully updated and well extended by the current owners offering collectively 2000 square foot of accommodation comprising: a fabulous 25ft x 19ft lounge dining room, immaculate refitted kitchen, utility room, ground floor shower room, three conventional first floor bedrooms and then a unique two storey self-contained living space on one side including another lounge and further bedroom with en-suite. Externally, this fantastic home benefits from a large front driveway and excellent corner plot rear garden that has been well landscaped featuring a fitted outdoor bar and BBQ area. Additionally to the rear is a large detached log cabin perfect for working from home! We highly recommend an internal viewing.



**W WESTWOODLEBER**

**W WESTWOODLEBER**  
LET US GUIDE YOU HOME

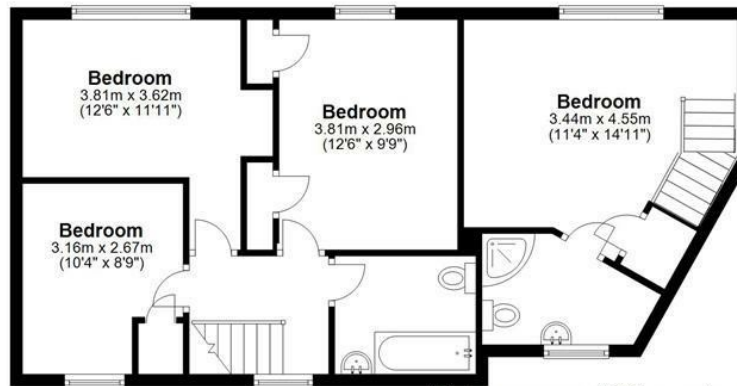
**Ground Floor**  
Approx. 103.9 sq. metres (1118.7 sq. feet)



**Outbuilding**  
Approx. 17.2 sq. metres (184.7 sq. feet)



**First Floor**  
Approx. 64.7 sq. metres (696.8 sq. feet)



Total area: approx. 185.8 sq. metres (2000.2 sq. feet)

FOR ILLUSTRATIVE PURPOSES ONLY. NOT TO SCALE. Whilst every attempt had been made to ensure the accuracy of the floor plan shown, all measurements, positioning, fixtures, features, fittings and any other data shown are an approximate interpretation for illustrative purposes only and are not to scale. No responsibility is taken for any error, omission, mis-statement or use of data shown.

Property marketing provided by [www.fotomarketing.co.uk](http://www.fotomarketing.co.uk)



WESTWOODLEBER



WESTWOODLEBER



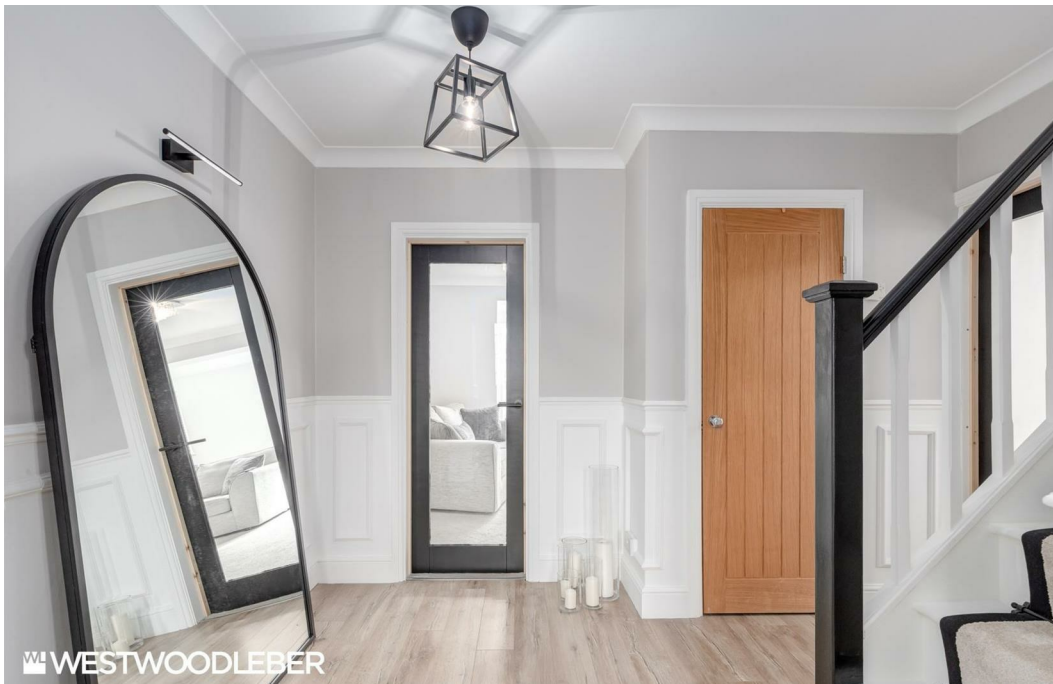
WESTWOODLEBER



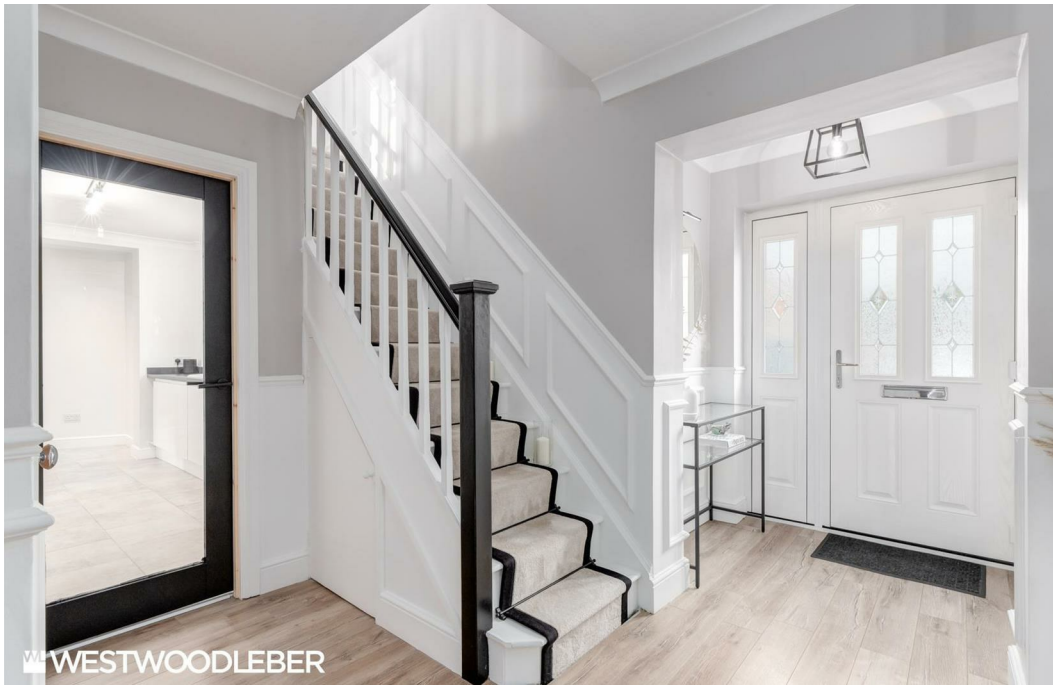
WESTWOODLEBER















WESTWOODLEBER



WESTWOODLEBER



WESTWOODLEBER



WESTWOODLEBER

