



WESTWOODLEBER
LET US GUIDE YOU HOME

High Wood Road, Hoddesdon, EN11 9AU
£625,000



High Wood Road, Hoddesdon, EN11 9AU

*** OPEN DAY 23RD MARCH *** Westwood Leber are delighted to bring to the market this immaculately presented four double-bedroom semi-detached chalet bungalow on this sought after residential close in the highly regarded Roselands Development. This property offers fantastic living accommodation throughout, comprising a large open plan kitchen/dining room with through lounge, three bedrooms on the ground floor and a master bedroom on the first floor with en-suite. Further benefits include a low maintenance rear garden with a fantastic outbuilding setup perfectly for hosting, a downstairs bathroom, beautiful modern fitted kitchen, ample storage in the eaves, a separate garage for further storage, and a drive to the front for multiple cars. An internal viewing is highly recommended!



 WESTWOODLEBER

 WESTWOODLEBER
LET US GUIDE YOU HOME

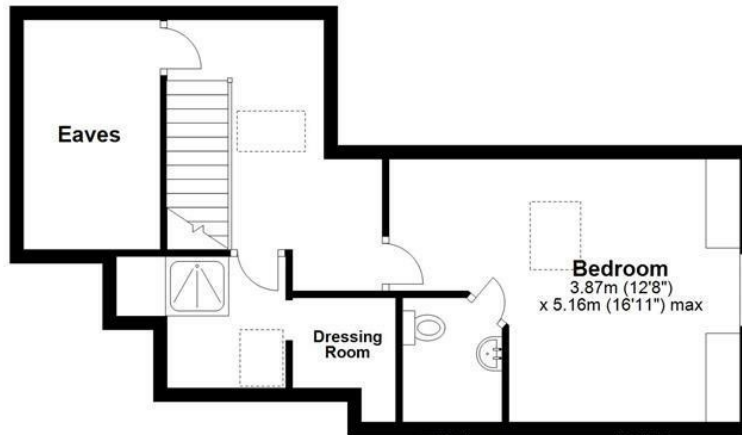
Ground Floor

Approx. 96.3 sq. metres (1036.8 sq. feet)



First Floor

Approx. 43.7 sq. metres (470.7 sq. feet)

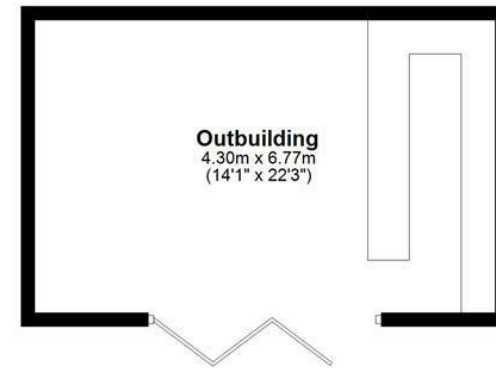


Total area: approx. 181.5 sq. metres (1953.4 sq. feet)

FOR ILLUSTRATIVE PURPOSES ONLY. NOT TO SCALE. Whilst every attempt had been made to ensure the accuracy of the floor plan shown, all measurements, positioning, fixtures, features, fittings and any other data shown are an approximate interpretation for illustrative purposes only and are not to scale. No responsibility is taken for any error, omission, miss-statement or use of data shown. Property marketing provided by Westwood Leber.
Plan produced using PlanUp.

Outbuilding

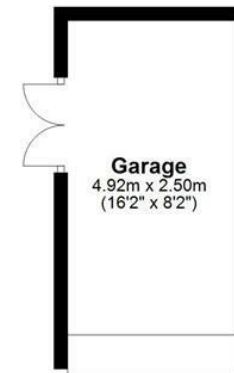
Approx. 29.1 sq. metres (313.6 sq. feet)



Outbuilding
4.30m x 6.77m
(14'1" x 22'3")

Garage

Approx. 12.3 sq. metres (132.2 sq. feet)



Garage
4.92m x 2.50m
(16'2" x 8'2")









WESTWOODLEBER



WESTWOODLEBER



WESTWOODLEBER



WESTWOODLEBER

