



**WESTWOODLEBER**  
LET US GUIDE YOU HOME

Plomer Avenue, Hoddesdon, EN11 9FR  
£235,000





## Plomer Avenue, Hoddesdon, EN11 9FR

Westwood Leber are delighted to bring to the market this immaculately presented two bedroom apartment located within close proximity and just a short drive to all of Hoddesdon's amenities. This property offers spacious living accommodation throughout including a large open plan lounge with double doors opening out onto a private balcony, separate refitted kitchen, family bathroom and an en-suite in the master bedroom. Further benefits include a long lease and allocated parking. An early viewing is highly recommended!

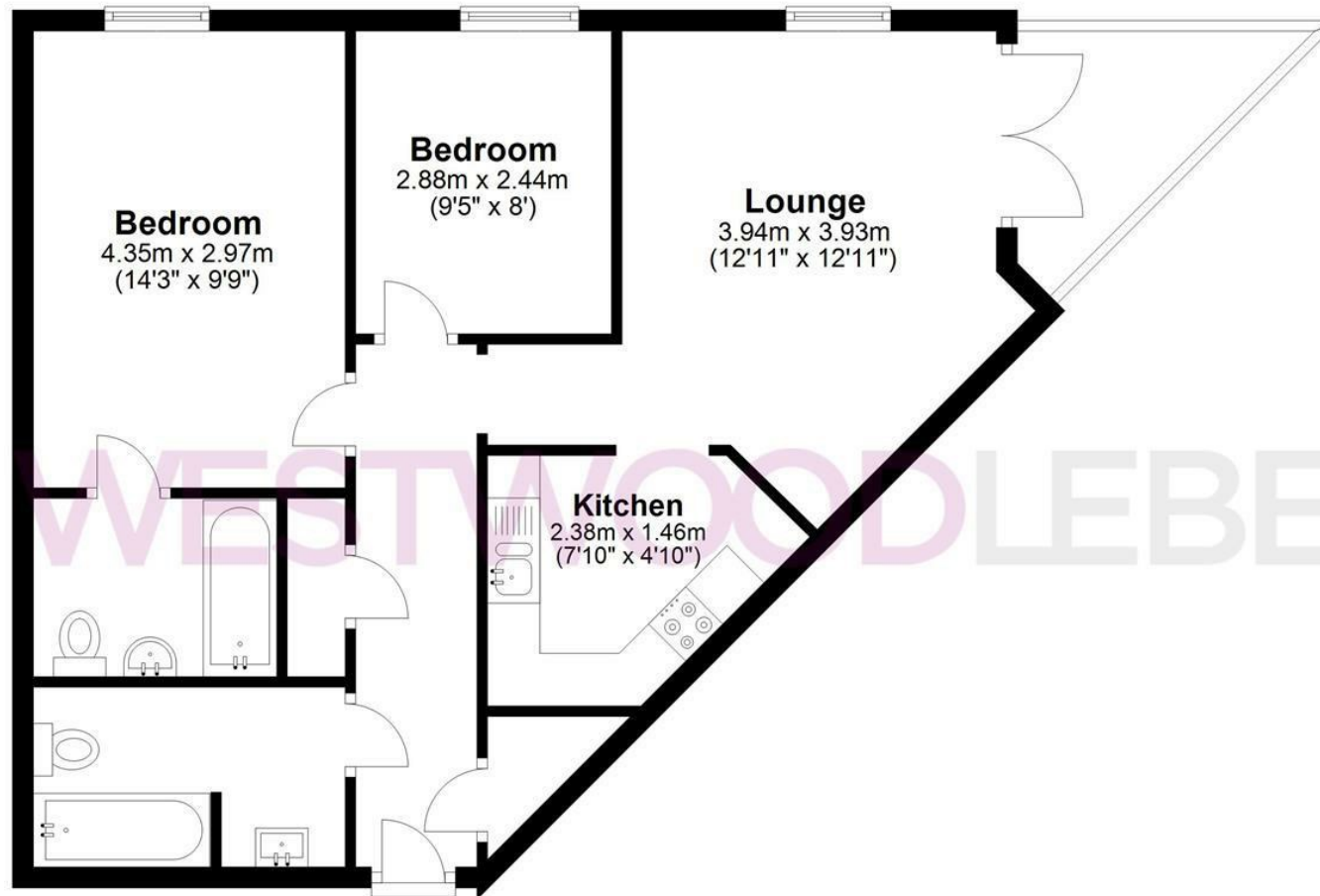


**WESTWOODLEBER**

**WESTWOODLEBER**  
LET US GUIDE YOU HOME

## Ground Floor

Approx. 61.0 sq. metres (657.0 sq. feet)



Total area: approx. 61.0 sq. metres (657.0 sq. feet)

FOR ILLUSTRATIVE PURPOSES ONLY. NOT TO SCALE. Whilst every attempt had been made to ensure the accuracy of the floor plan shown, all measurements, positioning, fixtures, features, fittings and any other data shown are an approximate interpretation for illustrative purposes only and are not to scale. No responsibility is taken for any error, omission, misstatement or use of data shown.

Property marketing provided by [www.fotomarketing.co.uk](http://www.fotomarketing.co.uk)













