



WESTWOODLEBER
LET US GUIDE YOU HOME

Church Path, Great Amwell, Ware, SG12 9RB
£1,695,000



Church Path, Great Amwell, Ware, SG12 9RB

**** EXCEPTIONALLY SPACIOUS HOME OFFERED CHAIN FREE **** Westwood Leber are delighted to bring to the market this magnificent family home positioned perfectly on this highly sought after private road located in the heart of Great Amwell. This impressive home has been tastefully updated and well extended by the current owners and provides fantastic accommodation extending to over 3000 sq feet.

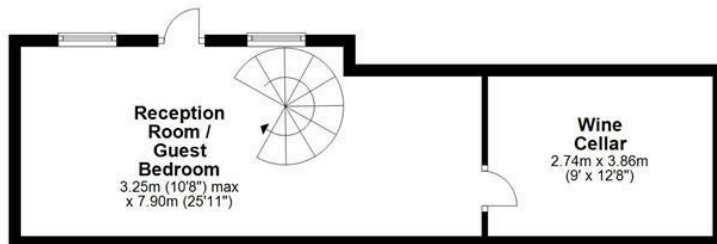
One of the main features of this charming property is the generous gardens which extend to approximately 200' and enjoy a high degree of privacy featuring a luxury decked terrace from which beautiful far reaching views are enjoyed over the valley and countryside beyond. In addition, this house also benefits from a larger than average in and out driveway that provides parking for several cars and leads to a garage.



WESTWOODLEBER

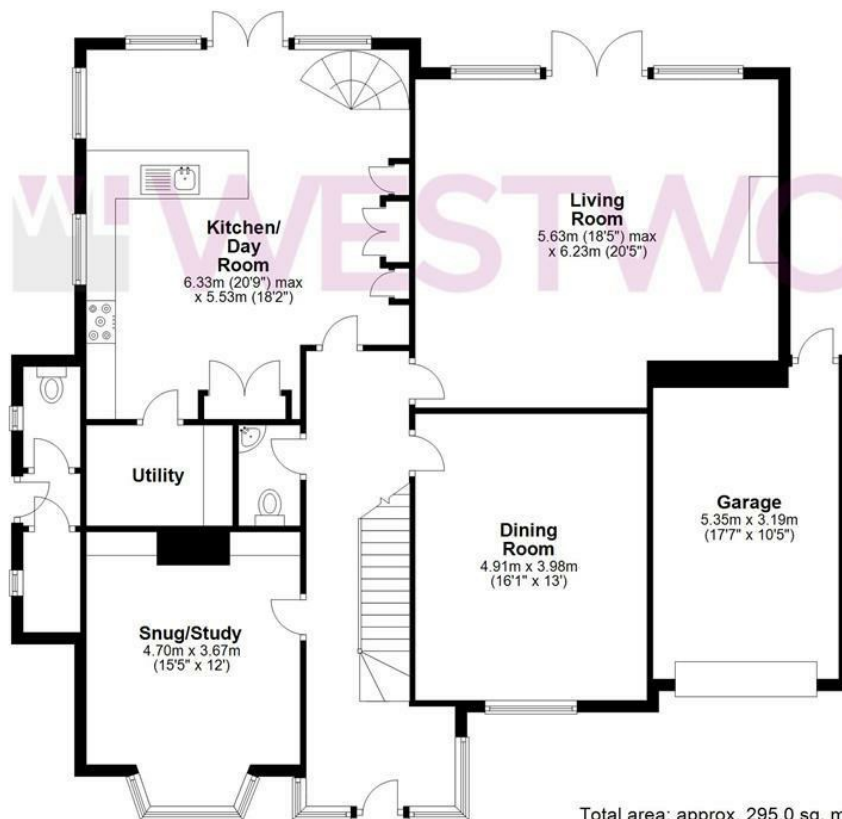
Basement

Approx. 35.3 sq. metres (380.2 sq. feet)



Ground Floor

Approx. 148.4 sq. metres (1597.6 sq. feet)



First Floor

Approx. 111.3 sq. metres (1197.9 sq. feet)

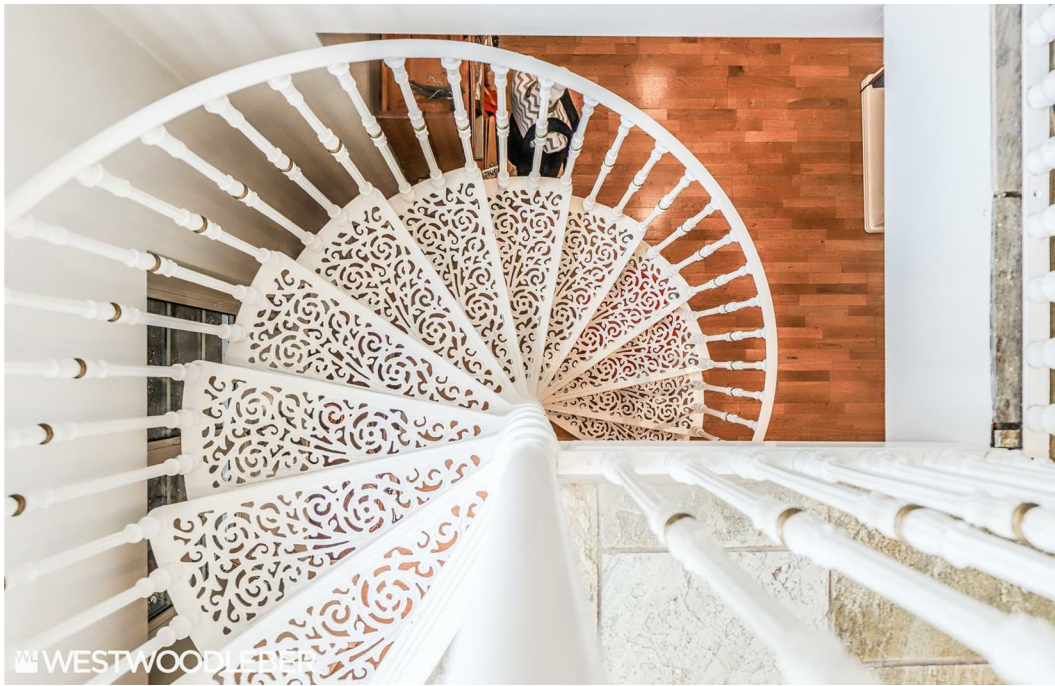


Total area: approx. 295.0 sq. metres (3175.7 sq. feet)

FOR ILLUSTRATIVE PURPOSES ONLY. NOT TO SCALE. Whilst every attempt had been made to ensure the accuracy of the floor plan shown, all measurements, positioning, fixtures, features, fittings and any other data shown are an approximate interpretation for illustrative purposes only and are not to scale. No responsibility is taken for any error, omission, miss-statement or use of data shown. Property marketing provided by Foto Ltd. Plan produced using PlanUp.







WESTWOODLEBER



WESTWOODLEBER



WESTWOODLEBER



WESTWOODLEBER







WESTWOODLEBER



WESTWOODLEBER



WESTWOODLEBER



WESTWOODLEBER



