

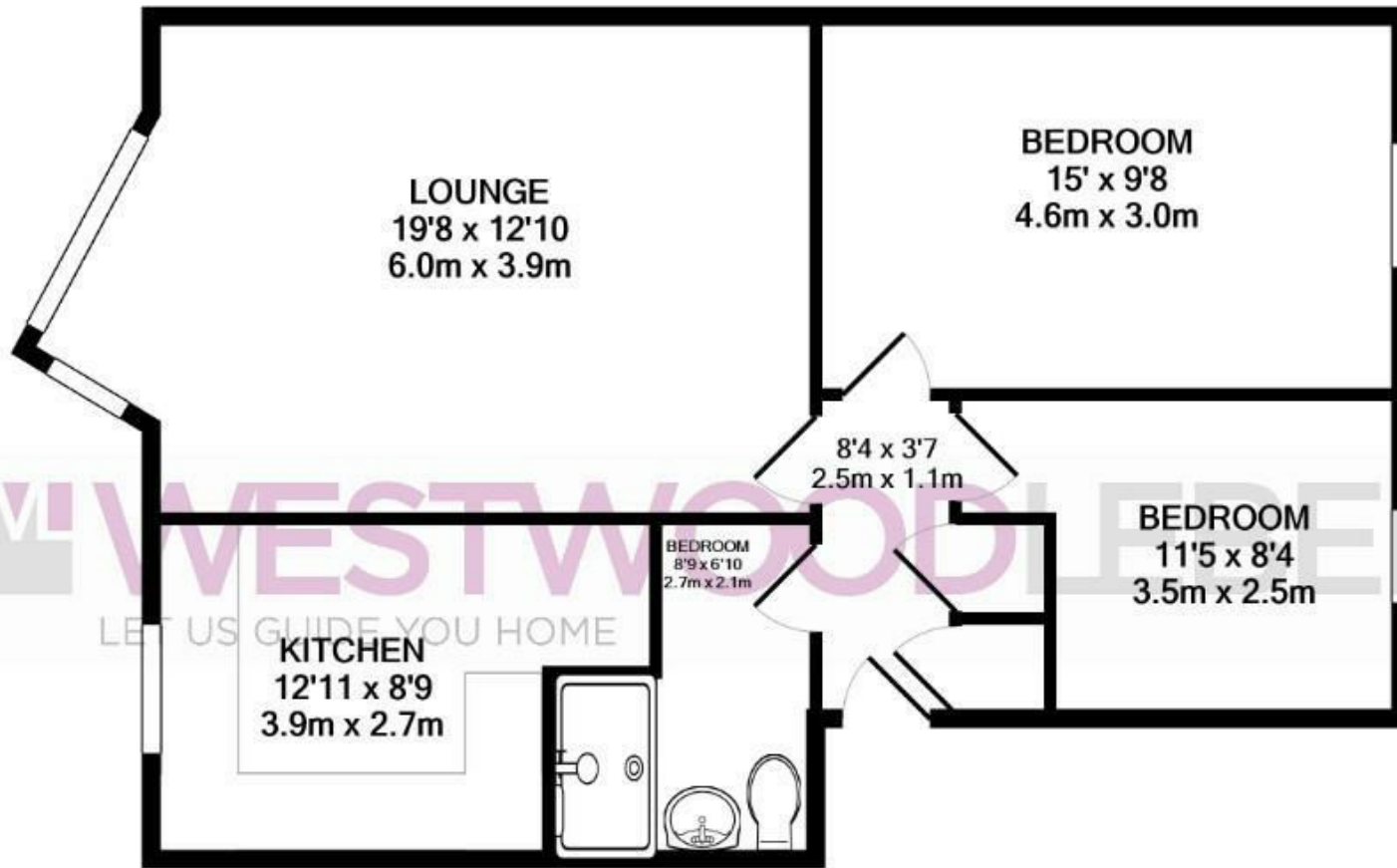




Park View, Hoddesdon, EN11 8PH

Westwood Leber are delighted to bring to the market this deceptively spacious two bedroom first floor apartment presenting stunning views over Hoddesdon Cricket Grounds and situated within walking distance of Hoddesdon Town Centre. This well presented apartment offers spacious living accommodation comprising of a large lounge leading to a well-sized kitchen. Further benefits include gas central heating, allocated parking and well kept communal gardens. An internal viewing is highly recommended.





TOTAL APPROX. FLOOR AREA 650 SQ.FT. (60.4 SQ.M.)

Whilst every attempt has been made to ensure the accuracy of the floor plan contained here, measurements of doors, windows, rooms and any other items are approximate and no responsibility is taken for any error, omission, or mis-statement. This plan is for illustrative purposes only and should be used as such by any prospective purchaser. The services, systems and appliances shown have not been tested and no guarantee as to their operability or efficiency can be given

Made with Metropix ©2021





