



WV WESTWOODLEBER

WV WESTWOODLEBER
LET US GUIDE YOU HOME

Walers Way, Hoddesdon, EN11 9LH
£499,995



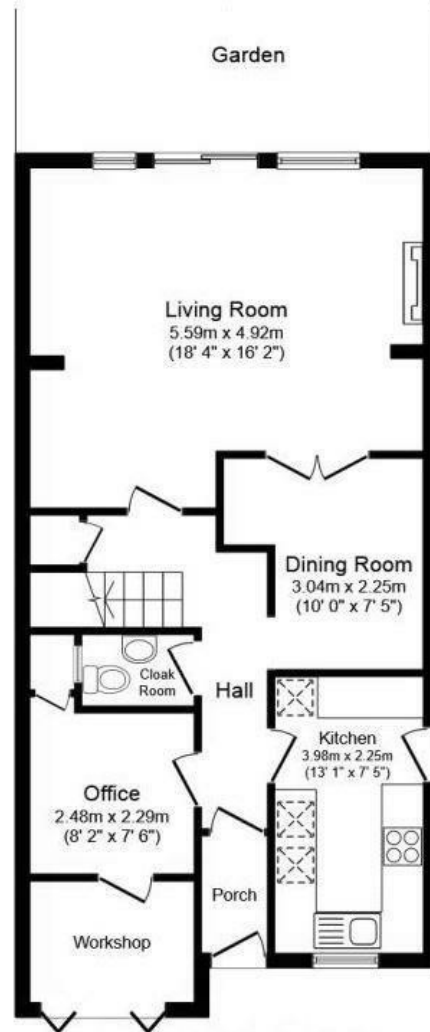
Walers Way, Hoddesdon, EN11 9LH

Westwood Leber are delighted to bring to the market this well extended four bedroom semi-detached family home that is immaculately presented throughout. This excellent property offers deceptively spacious accommodation that includes a ground floor w/c, study, two reception rooms, ensuite w/c, beautifully kept rear garden and a large front driveway. An early viewing is highly recommended!

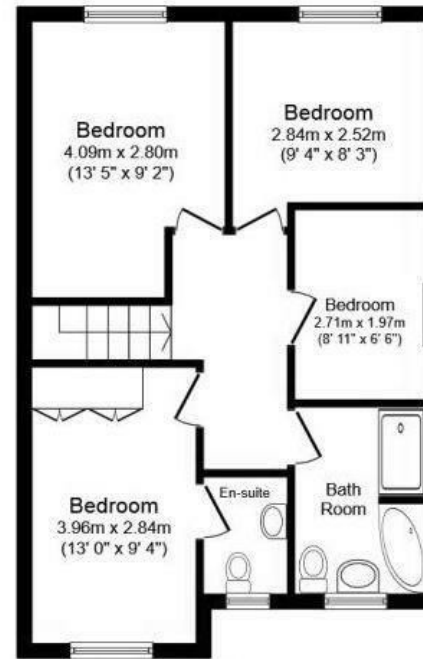


W WESTWOODLEBER

W WESTWOODLEBER
LET US GUIDE YOU HOME



Ground Floor



First Floor

Total floor area 115.0 sq. m. (1,238 sq. ft.) approx

This plan is for illustration purposes only and may not be representative of the property.
Plan not to scale.

Powered by audioagent.com













 WESTWOODLEBER

 WESTWOODLEBER
LET US GUIDE YOU HOME