



WESTWOODLEBER

WESTWOODLEBER
LET US GUIDE YOU HOME

Puttocks Drive, North Mymms, Hatfield, AL9 7LW
£575,000



Putlocks Drive, North Mymms, Hatfield, AL9 7LW

Westwood Leber are delighted to bring to the market this beautifully presented three bedroom semi-detached family home that has been tastefully updated by the current owners. Whilst the house has been completely renovated, this excellent house is also set on a fantastic corner plot which offers further scope to extend stpp. This property is within close proximity to many essential amenities including Welham Green Train Station. We would highly recommend an internal viewing.



 WESTWOODLEBER

 WESTWOODLEBER
LET US GUIDE YOU HOME

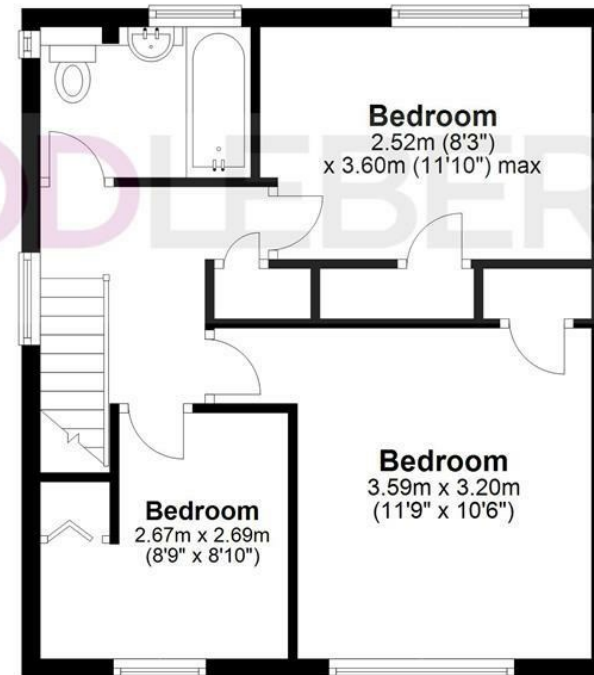
Ground Floor

Approx. 64.3 sq. metres (691.8 sq. feet)



First Floor

Approx. 41.1 sq. metres (442.6 sq. feet)



Total area: approx. 105.4 sq. metres (1134.4 sq. feet)

FOR ILLUSTRATIVE PURPOSES ONLY. NOT TO SCALE. Whilst every attempt had been made to ensure the accuracy of the floor plan shown, all measurements, positioning, fixtures, features, fittings and any other data shown are an approximate interpretation for illustrative purposes only and are not to scale. No responsibility is taken for any error, omission, miss-statement or use of data shown. Property marketing provided by

Westwood Leber.
Plan produced using PlanUp.









WESTWOODLEBER



WESTWOODLEBER



WESTWOODLEBER



WESTWOODLEBER

