



WESTWOODLEBER

**WESTWOODLEBER**  
LET US GUIDE YOU HOME

Winterscroft Road, Hoddesdon, EN11 8RL  
£480,000





## Winterscroft Road, Hoddesdon, EN11 8RL

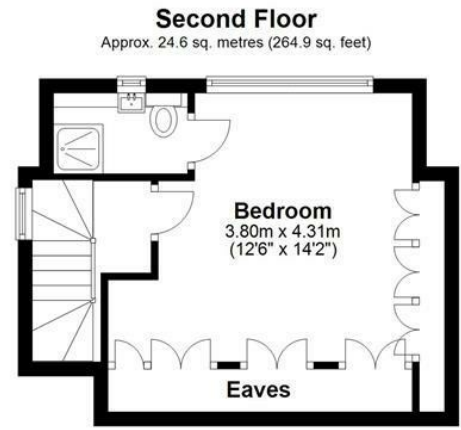
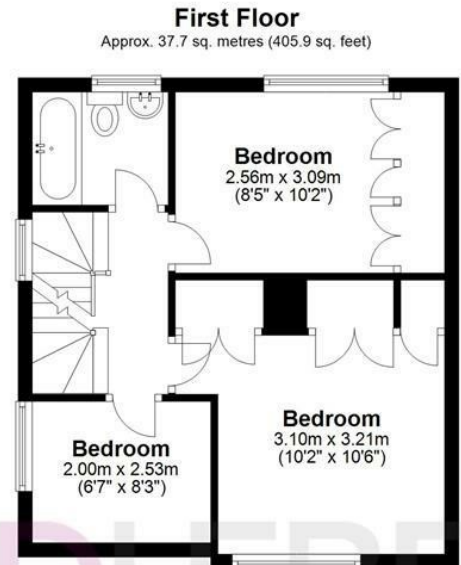
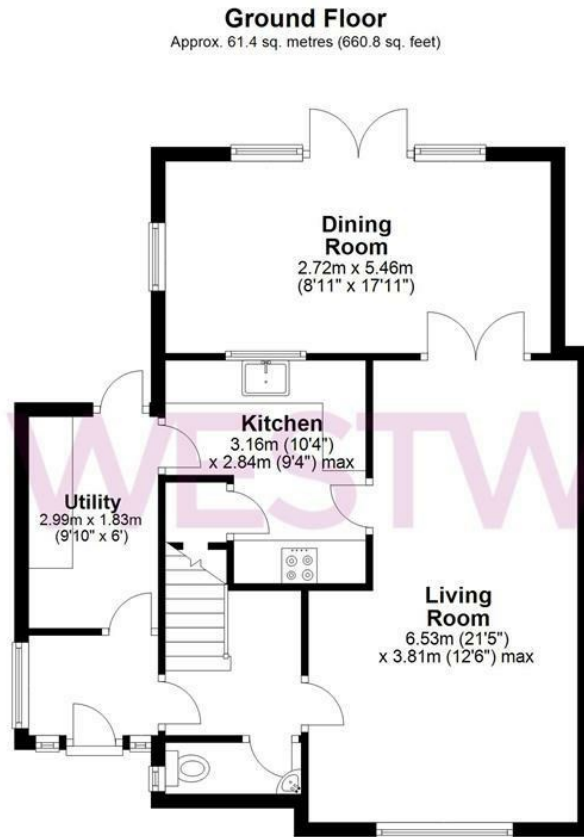
Westwood Leber are delighted to bring to the market this beautifully presented four bedroom family home set over three floors. The property has been tastefully updated by the current owners and offers deceptively spacious accommodation throughout. Benefits include a refitted kitchen, utility room, downstairs w/c, large lounge, separate dining room, three first floor bedrooms, a family bathroom and a top floor master suite with an en-suite shower room. Externally, the property has a large driveway and a well sized south-facing rear garden. This property is located in this highly sought-after residential road that is just a short walk from Hoddesdon Town Centre. An internal viewing is highly recommended!



**WESTWOODLEBER**

**WESTWOODLEBER**  
LET US GUIDE YOU HOME





Total area: approx. 123.7 sq. metres (1331.7 sq. feet)

FOR ILLUSTRATIVE PURPOSES ONLY. NOT TO SCALE. Whilst every attempt had been made to ensure the accuracy of the floor plan shown, all measurements, positioning, fixtures, features, fittings and any other data shown are an approximate interpretation for illustrative purposes only and are not to scale. No responsibility is taken for any error, omission, misstatement or use of data shown.

Property marketing provided by [www.fotomarketing.co.uk](http://www.fotomarketing.co.uk)  
Plan produced using PlanUp.

















