



WESTWOODLEBER

**WESTWOODLEBER**  
LET US GUIDE YOU HOME

Ashby Court, Whitley Road, Hoddesdon, EN11 0PT  
£249,995





## Ashby Court, Whitley Road, Hoddesdon, EN11 0PT

**\*\* B2L INVESTORS ONLY \*\*** Westwood Leber are delighted to bring to the market this immaculately presented two bedroom penthouse apartment located on this charming development located just a short walk from Rye House station offering fantastic links to London via Liverpool Street and Tottenham Hale. This property has benefits from deceptively spacious accommodation including a bright and airy, open plan kitchen/living room and off street parking. OFFERED CHAIN FREE AND WITH A LONG LEASE!

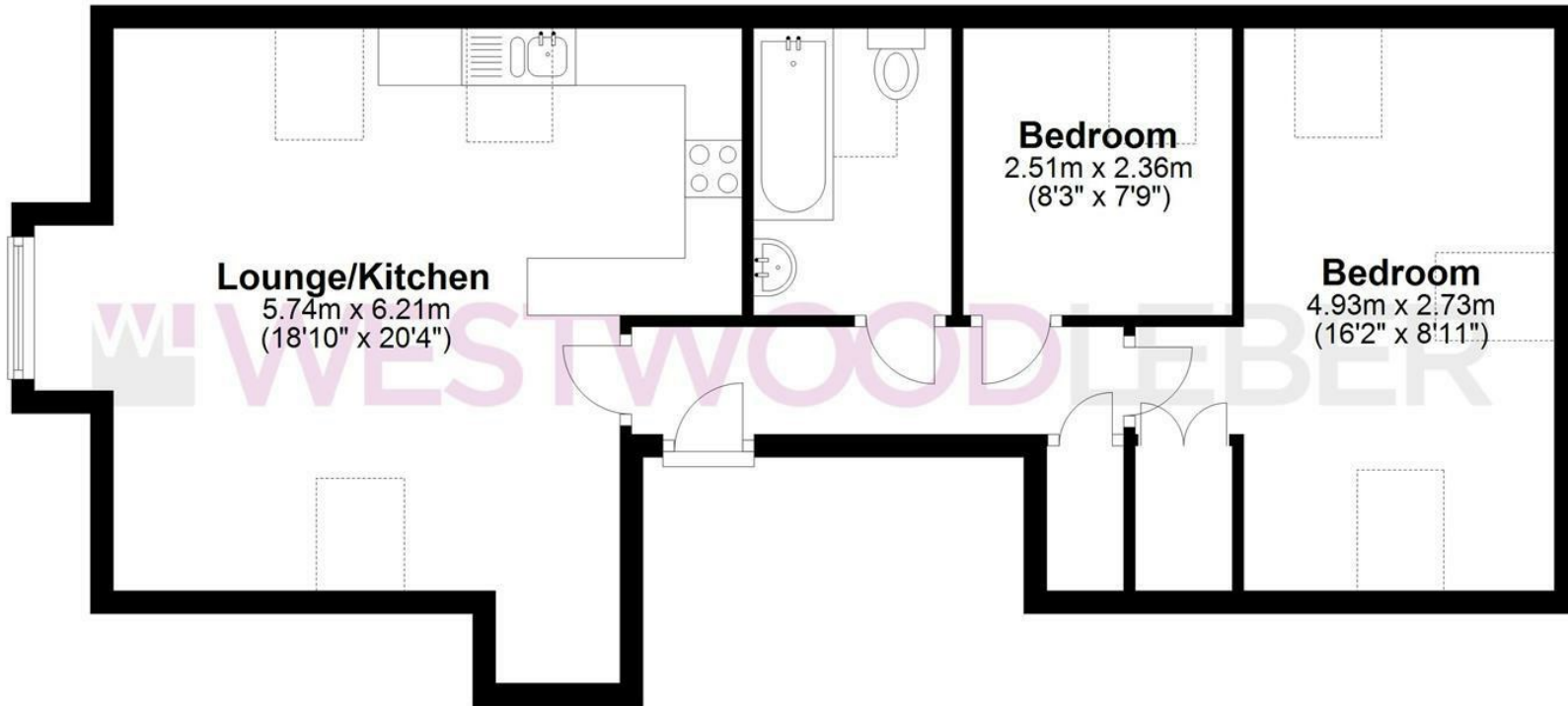


**WLI WESTWOODLEBER**

**WLI WESTWOODLEBER**  
LET US GUIDE YOU HOME

## Ground Floor

Approx. 59.0 sq. metres (635.5 sq. feet)



Total area: approx. 59.0 sq. metres (635.5 sq. feet)

FOR ILLUSTRATIVE PURPOSES ONLY. NOT TO SCALE. Whilst every attempt had been made to ensure the accuracy of the floor plan shown, all measurements, positioning, fixtures, features, fittings and any other data shown are an approximate interpretation for illustrative purposes only and are not to scale. No responsibility is taken for any error, omission, miss-statement or use of data shown.

Property marketing provided by [www.fotomarketing.co.uk](http://www.fotomarketing.co.uk)





WESTWOODLEBER



WESTWOODLEBER



WESTWOODLEBER



WESTWOODLEBER









