



WESTWOODLEBER

WESTWOODLEBER
LET US GUIDE YOU HOME

Gilston Park House, Gilston, CM20 2SF
£775,000



Gilston Park House, Gilston, CM20 2SF

Westwood Leber are delighted to bring to the market this magnificent apartment located within the heart of Gilston Park House. The mansion block boasts access to truly stunning communal grounds made up from approx 13 acres of gardens & two tennis courts. This unique property boasts a wealth of character and provides the perfect opportunity for a second home/retreat.

Benefits include two allocated parking spaces, visitors parking, garage, three bedrooms, one en-suite, several living areas and a lovely kitchen/breakfast room as well as a private roof terrace accessed through the clock tower with stunning 360 degree views of the surrounding countryside. Situated in the magnificent Gilston Park House, a stunning gothic Grade II mansion, this property benefits from a wide range of local amenities including shops, local pubs and schools. For transport, the property enjoys easy access to major road networks including the M11 and A10, whilst nearby Harlow is served well by rail with regular trains to Central London and surrounding areas.



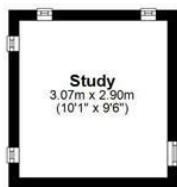
 WESTWOODLEBER

 WESTWOODLEBER
LET US GUIDE YOU HOME

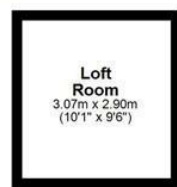
Ground Floor
Approx. 139.0 sq. metres (1495.8 sq. feet)



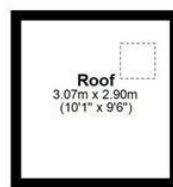
Clock Tower First Floor
Approx. 8.9 sq. metres (95.7 sq. feet)



Clock Tower Second Floor
Approx. 8.9 sq. metres (95.7 sq. feet)



Clock Tower Roof
Approx. 8.9 sq. metres (95.7 sq. feet)



Above En-suite



Above Bathroom

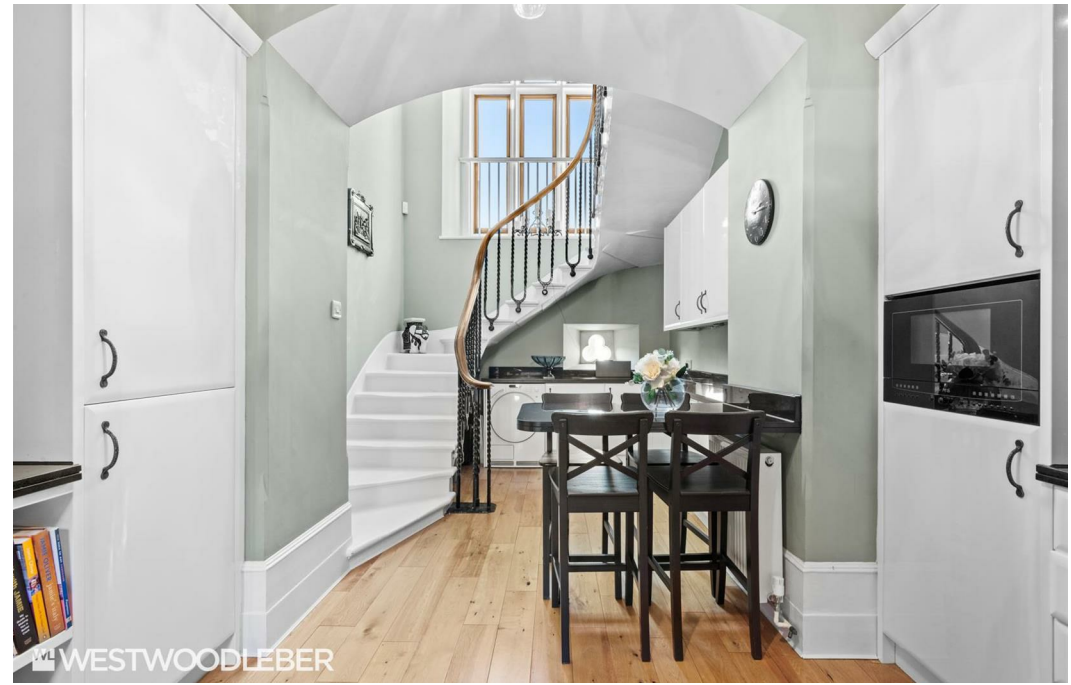


Total area: approx. 194.3 sq. metres (2091.2 sq. feet)

FOR ILLUSTRATIVE PURPOSES ONLY. NOT TO SCALE. Whilst every attempt had been made to ensure the accuracy of the floor plan shown, all measurements, positioning, fixtures, features, fittings and any other data shown are an approximate interpretation for illustrative purposes only and are not to scale. No responsibility is taken for any error, omission, miss-statement or use of data shown.

Property marketing provided by www.fotomarketing.co.uk







WESTWOODLEBER



WESTWOODLEBER



WESTWOODLEBER



WESTWOODLEBER









WESTWOODLEBER



WESTWOODLEBER



WESTWOODLEBER



WESTWOODLEBER





WESTWOODLEBER



WESTWOODLEBER



WESTWOODLEBER



WESTWOODLEBER