



WV WESTWOODLEBER

**WV WESTWOODLEBER**  
LET US GUIDE YOU HOME

Stortford Road, Hoddesdon, EN11 0AP  
£550,000



## Stortford Road, Hoddesdon, EN11 0AP

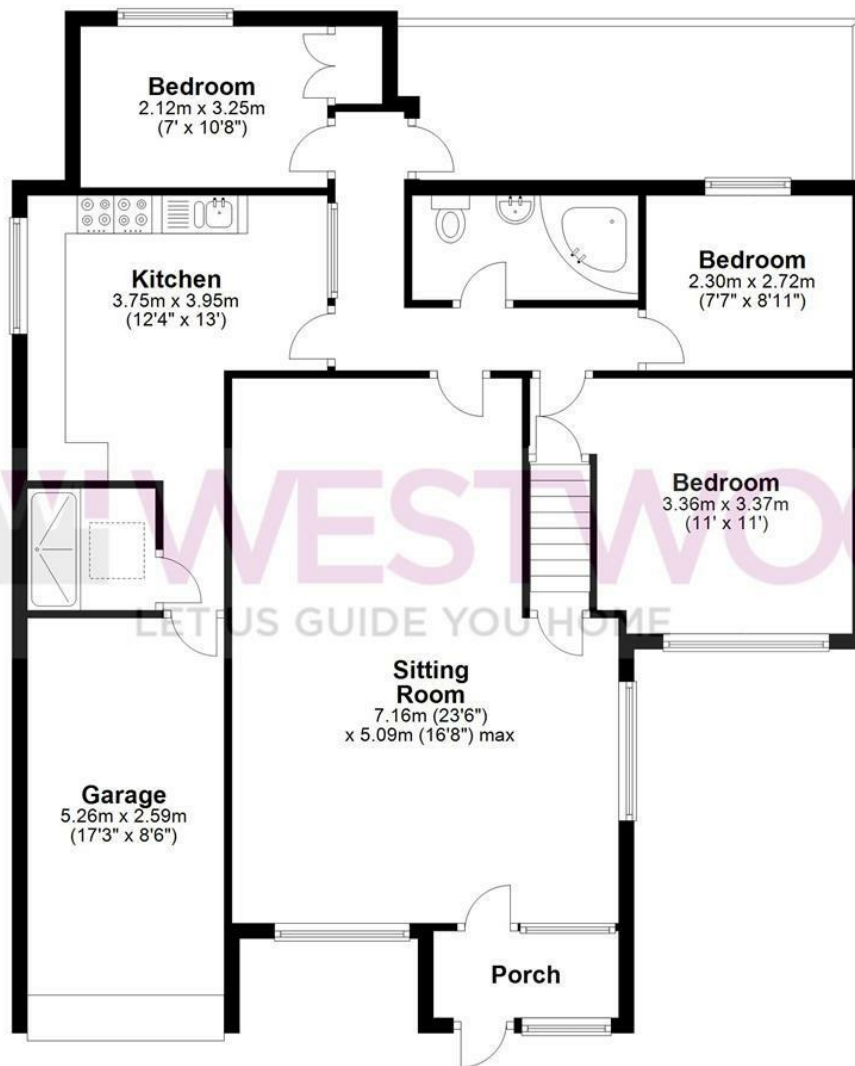
Westwood Leber are delighted to bring to the market this deceptively spacious three/four bedroom semi-detached bungalow with larger than average loft room. This property offers fantastic living accommodation throughout comprising: a large 23ft x 17ft sitting room, modern fitted kitchen with attached wet room, three double bedrooms and integral garage. Further benefits include off-street parking for multiple cars, large front garden/driveway, gated entrance and three-piece family bathroom. An internal viewing is highly recommended!



**WESTWOODLEBER**

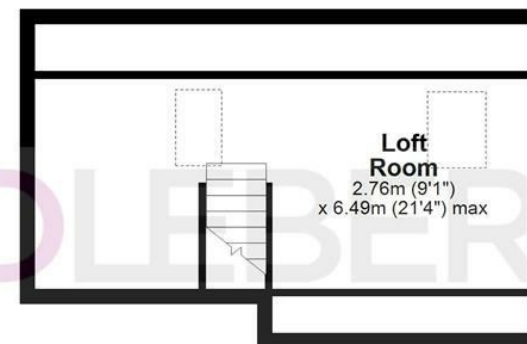
### Ground Floor

Approx. 107.6 sq. metres (1158.1 sq. feet)



### First Floor

Approx. 24.5 sq. metres (263.6 sq. feet)



Total area: approx. 132.1 sq. metres (1421.8 sq. feet)

FOR ILLUSTRATIVE PURPOSES ONLY. NOT TO SCALE. Whilst every attempt had been made to ensure the accuracy of the floor plan shown, all measurements, positioning, fixtures, features, fittings and any other data shown are an approximate interpretation for illustrative purposes only and are not to scale. No responsibility is taken for any error, omission, miss-statement or use of data shown. Property marketing provided by Westwood Leber.  
Plan produced using PlanUp.

